

Laboratory facilities used to test energy flexibility in buildings



A technical report from IEA EBC Annex 67 Energy Flexible Buildings

Laboratory facilities used to test energy flexibility in buildings

Editors

Thibault Péan and Jaume Salom
Catalonia Institute for Energy Research (IREC), Spain

Contributors

Francesco Goia, NTNU/SINTEF, Norway
Ala Hasan and Simo Kilpeläinen, VTT/Aalto University, Finland
Michaël Kummert, Polytechnique Montréal, Canada
Glenn Reynders, KU Leuven, Belgium
Gerard del Rosario, Catalonia Institute for Energy Research (IREC), Spain
Søren Østergaard Jensen, Danish Technological Institute (DTI), Denmark
Manuel Koch, Christof Ackermann, Christoph Messmer, Ralf Dott and Monika Hall, FHNW,
Switzerland
Peter Engelmann, Ivan Malenkovic, Korbinian Kramer Fraunhofer Institute for Solar Energy
Systems ISE, Germany

Second Edition

January, 2019



Preface

The increasing global energy demand, the foreseen reduction of available fossil fuels and the increasing evidence of global warming during the last decades have generated a high interest in renewable energy sources. However, renewable energy sources, such as wind and solar power, have an intrinsic variability that can seriously affect the stability of the energy system if they account for a high percentage of the total generation.

The Energy Flexibility of buildings is commonly suggested as part of the solution to alleviate some of the upcoming challenges in the future demand-respond energy systems (electrical, district heating and gas grids). Buildings can supply flexibility services in different ways, e.g. utilization of thermal mass, adjustability of HVAC system use (e.g. heating/cooling/ventilation), charging of electric vehicles, and shifting of plug-loads. However, there is currently no overview or insight into how much Energy Flexibility different buildings may be able to offer to the future energy systems in the sense of avoiding excess energy production, increase the stability of the energy networks, minimize congestion problems, enhance the efficiency and cost effectiveness of the future energy networks. Therefore, there is a need for increasing knowledge on and demonstration of the Energy Flexibility buildings can provide to energy networks. At the same time, there is a need for identifying critical aspects and possible solutions to manage this Energy Flexibility, while maintaining the comfort of the occupants and minimizing the use of non-renewable energy.

In this context IEA EBC Annex 67 Energy Flexible Buildings was started in 2015 with the aim of gaining increased knowledge on the benefits and services the utilization of the Energy Flexibility in buildings may provide to the future energy networks. The present report is one among several outputs from IEA EBC Annex 67. For further information, please visit <http://www.iea-ebc.org/projects/ongoing-projects/ebc-annex-67/>.

Published by Thibault Q. Péan and Jaume Salom, IREC – Catalonia Institute for Energy Research, Barcelona, Spain.

Disclaimer Notice: The report is not an official IEA EBC report. Although this publication is part of the work conducted within IEA EBC Annex 67 Energy Flexible Buildings, the publication only reflects the viewpoints of the authors. The EBC Contracting Parties (of the International Energy Agency Technology Collaboration Programme of Research and Development on Energy in Buildings and Communities) make any representation as to the adequacy or accuracy of the information contained herein, or as to its suitability for any particular application, and accept no responsibility or liability arising out of the use of this publication. The information contained herein does not supersede the requirements given in any national codes, regulations or standards, and should not be regarded as a substitute for the need to obtain specific professional advice for any particular application.

Contents

Preface	3
Contents	4
List of Figures	6
1. Introduction	8
2. Semi-virtual Energy Integration Laboratory (SEILAB) - IREC	9
2.1. General presentation	10
2.2. Description of the test facility	10
2.3. Examples of previous studies	14
2.4. Maintenance and collaborations	16
2.5. Additional information	16
2.6. Relevant publications	16
3. Energy Smart Lab - IREC	17
3.1. General presentation	18
3.2. Description of the test facility	18
3.3. Example of previous studies	21
3.4. Maintenance and collaborations	23
3.5. Additional information	23
3.6. Relevant publications	23
4. Nearly-zero Energy Building Emulator – Aalto University	24
4.2. General presentation	25
4.3. Description of the test facility	25
4.4. Example of previous studies	30
4.5. Maintenance and collaborations	31
4.6. Relevant publications	31
5. Labs in EnergyVille	32
5.1. General presentation	33
5.2. Description of the test facility - Battery Testing Lab	33
5.3. Description of the test facility – Home Lab	35
5.4. Description of the test facility – Smart Grid Infrastructure	36
5.5. Description of the test facility – Polyline Medium-Voltage Smart Energy Lab	38
5.6. Description of the test facility – Matrix Lab	39
5.7. Description of the test facility – Thermo-technical Lab	40
5.8. Maintenance and collaborations	41
5.9. Additional information	41
5.10. Relevant publications	41

6.	The OPSYS test rig - DTI	43
6.1.	General presentation	44
6.2.	Description of the test facility	44
6.3.	Examples of previous studies	49
6.4.	Maintenance and collaborations	51
6.5.	Additional information	51
6.6.	Relevant publications	51
7.	ZEB Living Laboratory - NTNU / SINTEF	52
7.1.	General presentation	53
7.2.	Description of the test facility	53
7.3.	Example of previous studies.....	60
7.4.	Maintenance and collaborations	61
7.5.	Additional information	61
7.6.	Relevant publications	61
8.	Semi-virtual Laboratory – Polytechnique Montréal	62
8.1.	General presentations	63
8.2.	Description of the test facility	63
8.3.	Examples of previous studies	67
8.4.	Maintenance and collaborations	69
8.5.	Additional information	69
8.6.	Relevant publications	70
9.	Energy Research Lab ERL – Institute of Energy in Building FHNW (CH)	71
9.1.	General Presentation.....	72
9.2.	Description of the Test Facility	72
9.3.	Examples of Previous Studies	76
9.4.	Maintenance and Collaborations	79
9.5.	Additional Information.....	79
9.6.	Relevant Publications	79
10.	Test Lab Heat Pumps and Chillers at Fraunhofer ISE.....	80
10.1.	General Presentation.....	81
10.2.	Description of the Test Facility	81
10.3.	Example of previous studies.....	89
10.4.	Maintenance and collaborations	90
10.5.	Additional Information.....	90
10.6.	Relevant publications	91

List of Figures

Figure 1. General concept of the semi-virtual testing.	11
Figure 2. Picture of the SEILAB climate chamber.....	11
Figure 3. PV equipment on the roof of SEILAB.....	12
Figure 4. Screenshot of the Labview interface.	13
Figure 5. Experimental setup (a) and corresponding diagram (b).	14
Figure 6. Experimental setup (a) and graph showing the COP and EER in function of the part-load ratio (PLR) (b).	14
Figure 7. Scheme of the experimental setup for the mCHP test.....	15
Figure 8. General concept of the IREC Energy Smart Lab testing facilities.....	19
Figure 9. Energy storage systems: flywheel (left), Li-ion battery (middle) and ultracaps (right).....	19
Figure 10. Overview of the microgrid: microgrid emulators (back), electric vehicle (right) and data acquisition and control system (front).	20
Figure 11. Grid emulator.	20
Figure 12. Data acquisition, control and communications architecture of the microgrid.	21
Figure 13. (a) Experimental setup for the implementation of the test grid including (b) a generator emulator, (c) a Li-ion battery pack, and (d) a load emulator.....	22
Figure 14. Active power measurements during flexibility delivery at customer’s premises. .	22
Figure 15. Operation and basic component diagram of the emulator platform.	26
Figure 16. PV panels and microwind turbine on the roof of the K4 building.	26
Figure 17. PV and island network inverters.	27
Figure 18. Flat-plate solar collectors on the roof of the K4 building.	27
Figure 19. Ground source heat pump.	28
Figure 20. One of the hot water tanks, and schematic of the storage tank connections.	28
Figure 21. Screenshot of the Labview interface.	29
Figure 22. Monthly average matching indices OEF _e and OEF _m at different time averaging intervals.	30
Figure 23. Illustration of battery testing.	33
Figure 24. HomeLab.....	35
Figure 25. Polyline Medium Voltage Smart Energy Lab.	38
Figure 26. Thermo-technical lab.	40
Figure 27. Principle sketch of experimental setup.	44
Figure 28. General concept of the semi-virtual OPSYS test rig.....	45
Figure 29. The heat exchangers emulating the heat emitters in a heating system (left). The actuators of the heating system (right).	46
Figure 30. The connections between the test rig, the simulation computer and the data logger.	47
Figure 31. Screenshot of the BMS interface showing the heat emitting system.	48
Figure 32. Plan and vertical section of the Living Laboratory (1: entrance; 2: living room; 3: kitchen; 4: studio room; 5,6: bedroom; 7: bathroom; 8: technical room). Original Figure in Goia et al. 2015.	54
Figure 33. Thermal and electrical energy/power flow in the Living Laboratory; technologies and devices for energy conversion and storage and associated monitoring system. Original figure in Goia et al. 2015.....	56
Figure 34. Semi-virtual testing at Polytechnique Montréal.....	63
Figure 35. Hydronic loops of the Semi-Virtual Laboratory.	65

Figure 36. Screenshot of the Labview interface	67
Figure 37. Principle of the LabVIEW interaction with TRNSYS.....	67
Figure 38. PCM tank viewed from the inlet, including 1) perforated plate, 2) capsule support and 3) PCM capsules.....	68
Figure 39. Position of the instrumented PCM capsule in the tank as viewed from the outlet.	68
Figure 40. Example of results for a test with a fixed temperature change rate at the inlet of the tank.....	68
Figure 41. Example of results for a cooling step test.	68
Figure 42. PCM tank in a hydronic heating loop for semi-virtual testing.....	69
Figure 43. (1) Photovoltaics (2) Thermodynamic core stage 2 (3) Heat pump (4) Domestic hot water storage (5) Phase-change storage (6) Thermodynamic core stage 1 (7) Climate chamber	72
Figure 44. Second stage of the thermodynamic core (left). Heat pump and domestic hot water storage (right).	72
Figure 45. Second stage of the thermodynamic core with emulation models and real test components.....	73
Figure 46. Climate chamber and external unit of split heat pump.....	73
Figure 47. Phase-change storage	73
Figure 48. Example of a simple CARNOT model with parameter mask for the heat pump... ..	75
Figure 49. System #4.....	77
Figure 50. Annual grid electricity consumption of the systems for SFH45	77
Figure 51. Monthly energy balance of the PCS for SFH45*	78
Figure 52. LEWASEF system with PV and battery	78
Figure 53. General concept of the testing setup including the measuring and conditioning modules	83
Figure 54: Floor plan of the Centre for Heating and Cooling Technologies.....	84
Figure 55: Submodule hydraulic	85
Figure 56: Submodule heat meter.....	86
Figure 57: Submodule potable water.....	86
Figure 58: Sub module gas balancing	87
Figure 59: Submodule air condition section.....	87
Figure 60: Double climate chamber	87
Figure 61: Plan of the climate chamber.....	88
Figure 62: Central module with patch panel and electric energy balancing.....	88
Figure 63: Screenshot of the visualization of measurement data	89
Figure 64: Setup of the demonstration unit in MOSKWA for the combined use of outside and discharged air	90

1. Introduction

The International Energy Agency (IEA) manages several research programmes, among which the Energy in Buildings and Communities (EBC) programme. The Annex 67 of the IEA EBC focuses on the energy flexibility of buildings, its potential and how to harness it. Sixteen countries have joined this Annex to gather the research efforts towards a better characterization and understanding of energy flexibility in buildings.

The first subtask of the Annex (Subtask A) relates to the definitions, terminology, methodologies for characterization and market analysis of energy flexibility. As for Subtask B, it focuses on implementing flexibility strategies and verifying their performance. In this way, the theoretical flexibility potential can be evaluated against experimental data. Activity B.3. especially consists in laboratory tests of components, systems and control strategies. In this framework, several partners have made their laboratory facilities available for the needs of the Annex 67 as well for the scientific community and the industry. The names and the location of the laboratories included in this report are summarized in the following table:

Name	Managed by	Location
SEILAB	IREC - Catalonia Institute for Energy Research	Tarragona, Spain
Energy Smart Lab	IREC - Catalonia Institute for Energy Research	Barcelona, Spain
NZEB Emulator	VTT / Aalto University	Espoo, Finland
EnergyVille labs	EnergyVille (VITO, KU Leuven, IMEC)	Genk, Belgium
OPSYS test rig	Danish Technological Institute (DTI)	Taastrup, Denmark
ZEB Living Lab	NTNU / SINTEF	Trondheim, Norway
Semi-Virtual Laboratory	Polytechnique Montréal	Montréal, Canada
Energy Research Lab	Institute Energy in Building, FHNW	Muttenz, Switzerland
Test Lab Heat Pumps and Chillers	Fraunhofer Institute for Solar Energy Systems	Freiburg, Germany

In order to better understand the capabilities and specificities offered by the available laboratories, the present report draws a description of each test facility. For each one, a general presentation of the lab enables to quickly understand the purpose of the facility. The interested reader then has access to a more detailed description, with the technical specifications of the installation and illustrations. Some examples of previous tests performed in these labs are also presented, along with references to the corresponding publications. The final objective of the report is to provide a clear overview of the potential offered by the testing facilities in the network of Annex 67. In this way, any interested stakeholder, within or without this network, can contact directly the responsible entity in order to perform experimental testing in these facilities.

2. Semi-virtual Energy Integration Laboratory (SEILAB) - IREC



Institution / Department

IREC – Catalonia Institute for Energy Research
Energy Efficiency in Systems, Buildings and Communities
Thermal Energy and Buildings Performance Group



Location of the test facility

Campus de Sescelades, edifici N5
Marcel·lí Domingo, s/n
43007 TARRAGONA (Spain)
Tel. +34 977 202 444

Contact persons

Dr. Jaume Salom
Head of Research Group
jsalom@irec.cat
Tel. +34 933 562 615 Ext. 240

Dra. Elena Fuentes
Head of SEILAB
efuentes@irec.cat
Tel. +34 977 297 926

2.1. General presentation

The Semi-Virtual Energy Integration Laboratory (SEILAB) provides advanced expertise to assess the development and integration of renewable energy solutions and innovative thermal and electrical equipment that are designed to improve energy efficiency in buildings and energy systems. The laboratory is provided with cutting-edge technology comprising systems for energy generation, heat and cool storage and state-of-the-art facilities for testing HVAC equipment and the interaction of energy systems with the grid. The laboratory operation is based on a semi-virtual testing approach, which allows for real equipment to be operated as a function of the behaviour of a dynamic virtual model. The laboratory is pioneer in addressing the smart integration of electrical and thermal components and aims to become a leading experimental facility for improving the development of Net Zero Energy Buildings and Flexible Energy buildings.

2.2. Description of the test facility

2.2.1. General principle and testing possibilities

General testing principles

The general concept of the semi-virtual testing is presented in Figure 1. A real physical device is placed in the lab, where it is studied under specific conditions that are simulated and implemented in the virtual environment. The overall principles are as follows:

- Testing the performance of components or complex energy systems under defined building and environmental conditions
- Development and integration of innovative sustainable, renewable building energy supply systems.
- Analysis of equipment behaviour at particular transitory phases

Detailed testing principles

- Experimental testing of thermal and electrical equipment performance under real-life dynamic conditions, addressing a range of climate zones and thermal building behaviour scenarios.
- Comparison on the performance of equipment provided with particular innovative control concepts to ensure adequate system reliability in real applications.
- Assessment and improvement of innovative efficient energy technologies, such as energy storage systems, photovoltaic and thermal solar systems, nanofluids for HVAC equipment and micro-cogeneration.
- Development of novel measurement methodologies and test protocols to assess realistically the energy performance of thermal and electrical equipment beyond testing methods established in current international standards, including analysis of the Seasonal Performance Factor.
- Optimisation of operation for multiple energy sources and loads for matching energy generation and demand, including microgrid interaction.
- Development of detailed and/or simplified models for use in system simulation software and of learning-method predictive techniques for thermal components performance that are validated using test bench experimental data.

- Research on the integration and effects of local building components in smart energy systems to achieve Zero and Positive Energy Buildings.
- Research on control systems for flexible buildings, including renewables.
- Environmental testing of building components and electrical equipment under realistic climatic conditions in a room-sized climate chamber.

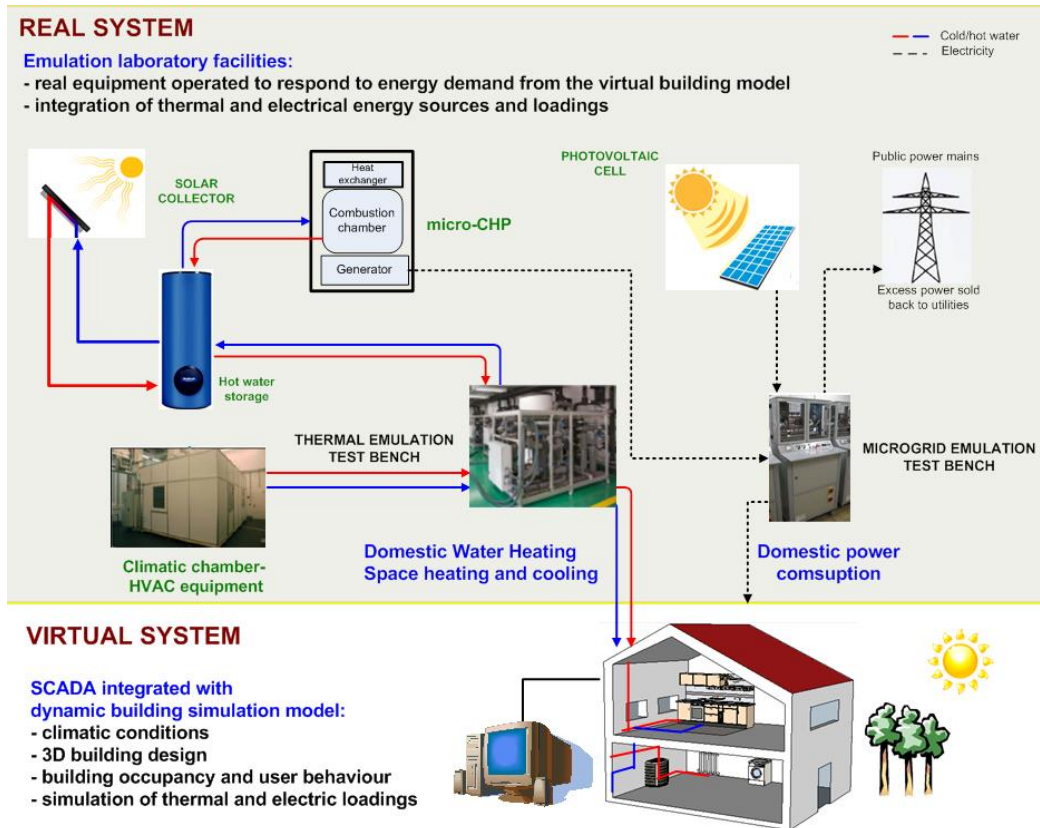


Figure 1. General concept of the semi-virtual testing.

2.2.2. Equipment available and specifications

Climate chamber

The laboratory counts with a walk-in climate chamber (shown in Figure 2) for testing different devices. The climate chamber generates the environmental air characteristics (temperature and humidity) according to the climate conditions in the standards. The chamber is provided with a set of 24PT100 sensors, 2 pressure sensors, 4 humidity sensors and 10 hot wire anemometers for air velocity measurement, which are regularly



Figure 2. Picture of the SEILAB climate chamber.

maintained and calibrated. The climate chamber has a volume of 45 m³, with the following range for temperature, humidity and air flow control:

- temperature range: -30 to +60°C
- RH: 15-98%
- air flow: 8000-10000 m³/h
- maximum power of condenser: 46.8 kW

Hydraulic thermal test benches

The laboratory counts with a set of thermal test benches for emulating the heat and load source, as specified in standards EN14511, EN16147 and EN14528. The thermal test benches consist of a set of hydraulic loops which are equipped with hydraulic components such as flow meters and motorized valves to control the flow and temperature to the heating/cooling unit under testing. Water circulation is achieved by means of circulating pumps equipped with frequency inverters and high speed modulating control valves provided with magnetic actuators. The hydraulic circuits include expansion vessels and security valves that are installed as standard with piping isolated by means of 30 mm synthetic rubber material. The water used in the installations generally is decalcified and mechanically filtrated. Temperatures are measured with Pt100 in 3 wired circuit sensors with terminal head form B tolerance class A (EN 60 751). Calibration is performed regularly on the flow meters and temperature sensors. Hydraulic pressure is measured in every test bench with digital pressure meters.

Along with measurement systems, the test benches are provided with the following control elements:

- 2 magnitive-inductive flowmeters Endress & Hauser per test bench for volume flow measurement
- 2 precision control valves for flow and temperature control per test bench.

The available thermal test benches have the following characteristic in terms of heating performance:

- water temperature range: -7°C – 150°C
- water flow range: 3.5-9 m³/h
- maximum heating power per sample: 30kW
- maximum cooling power per sample: air-to-water 15 kW, water-to-water 30kW

Temperature, flow and pressure measurements in the thermal test benches fulfil requirements specified in the EN14511, EN14528 and EN16147 standards. The instrumentation in the laboratory allows for a very fast control of temperatures and water flows to emulate loads, which allows its application both for emulating steady-state and transient dynamic profiles. An additional test bench for emulating data centre cooling is also present in the lab.

PV system



Figure 3. PV equipment on the roof of SEILAB.

A PV system is installed on the roof, summing up to an installed capacity of 3.5 kWp. A photo of the equipment is presented on Figure 3.

Other equipment

Several other devices are available in the lab:

- 1 heat pump air-to-water Buderus (7.4 kW heating, 8 kW cooling)
- 1 heat pump water-to-water Dynaciat (40 kW heating, 34 kW cooling)
- Water storage tanks of 1500, 1000 and 300 liters
- Micro data centre of 1.2 kW partially water cooled
- Gas boiler Saunier Duval Themafast 25-A
- 2 electrical test benches (emulated power 5.5 kVA, max generation connected 10 kVA, max consumption connected 10 kVA)

2.2.3. Data acquisition and control

The tests are performed by means of a control system created in the laboratory. The software allows for visualising the operation of the laboratory equipment, controlling the test performance and performing data acquisition. Communications are based on Modbus TCP and RTU industrial protocols, with the laboratory software communicating with actuators and sensors via automatic controllers and data acquisition modules through RS485 connections.

A Labview interface (Figure 4) enables to communicate with the different elements being tested in the lab. This interface can be connected to transient simulation software TRNSYS, where building models can be implemented to simulate the heating or cooling loads of a building or the performance of the virtual part of the system. Other software than TRNSYS, such as Energy Plus or IDA-ICE can be connected with the Labview interface. Remote visualisation of experiments in real time is possible for external collaborators.

In addition, a weather station is placed on the roof and connected to the lab interface. It measures the ambient air temperature, the wind velocity, the relative humidity and the global and diffuse radiation.

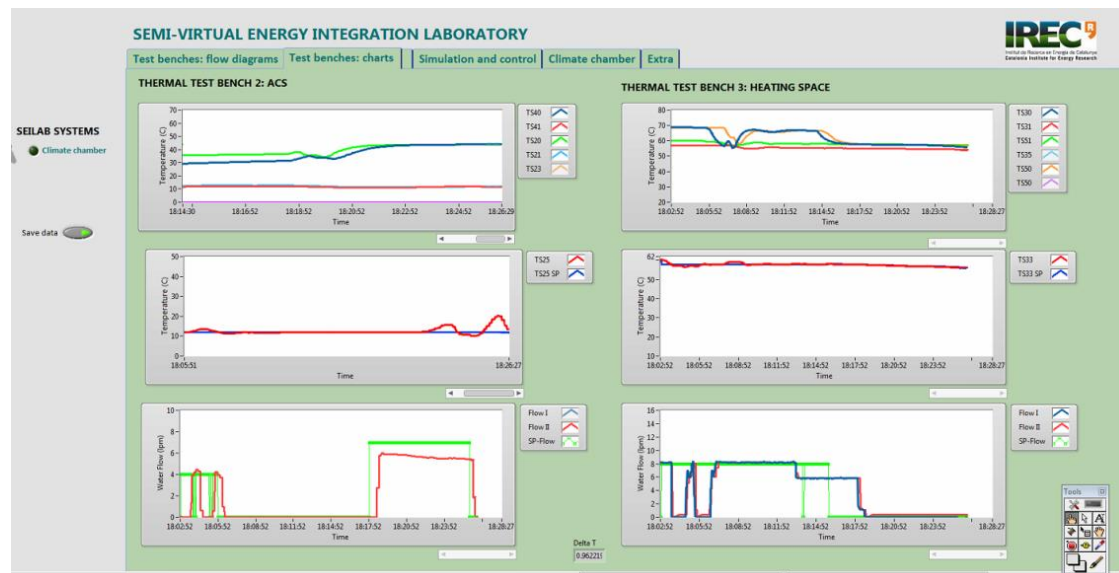


Figure 4. Screenshot of the Labview interface.

2.3. Examples of previous studies

2.3.1. Study 1: Experimental Study of Grid Frequency Regulation Ancillary Service of a Variable Speed Heat Pump

This study (Kim, Fuentes, and Norford 2016) describes an analysis of a variable speed heat pump (VSHP), which responds to direct load control (DLC) signals to provide grid frequency regulation (GFR) ancillary service, while ensuring the comfort of building occupants. A data-driven dynamic model of the VSHP is developed through real-time experimental studies with a time horizon ranging from seconds to hours. The model is simple, yet still sufficiently comprehensive to analyze the operational characteristics of the VSHP. The DLC scheme is then experimentally applied to the VSHP to evaluate its demand response (DR) capability. Two control methods are considered for a practical implementation of the DLC-enabled VSHP and a further improvement of the DR capability, respectively. Additionally, a small-signal analysis is carried out

using the aggregated dynamic response of a number of DLC-enabled VSHPs to analyze their contribution to GFR in an isolated power grid. For experimental case studies, a laboratory-scale micro-grid is then implemented with generator and load emulators. We show that the DLC-enabled VSHP can effectively reduce grid frequency deviations and required reserve capacities of generators. The experimental setup used for this study is presented in Figure 5. This experimental study was performed in the framework of a collaboration with MIT (USA) and HITACHI.

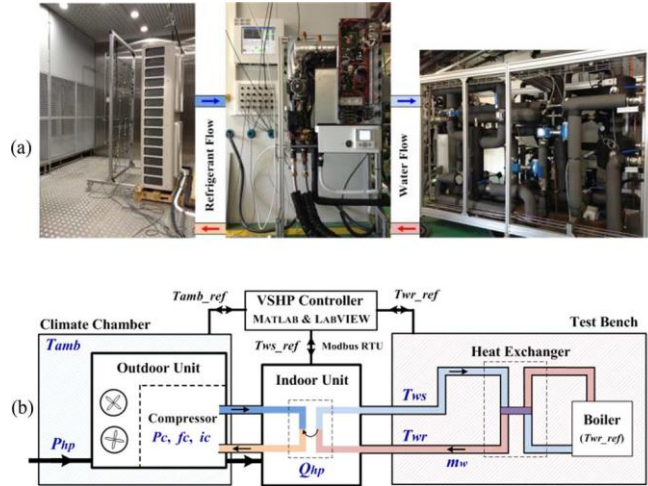


Figure 5. Experimental setup (a) and corresponding diagram (b).

2.3.2. Study 2: Partial load efficiency degradation of a water-to-water heat pump under fixed set-point control

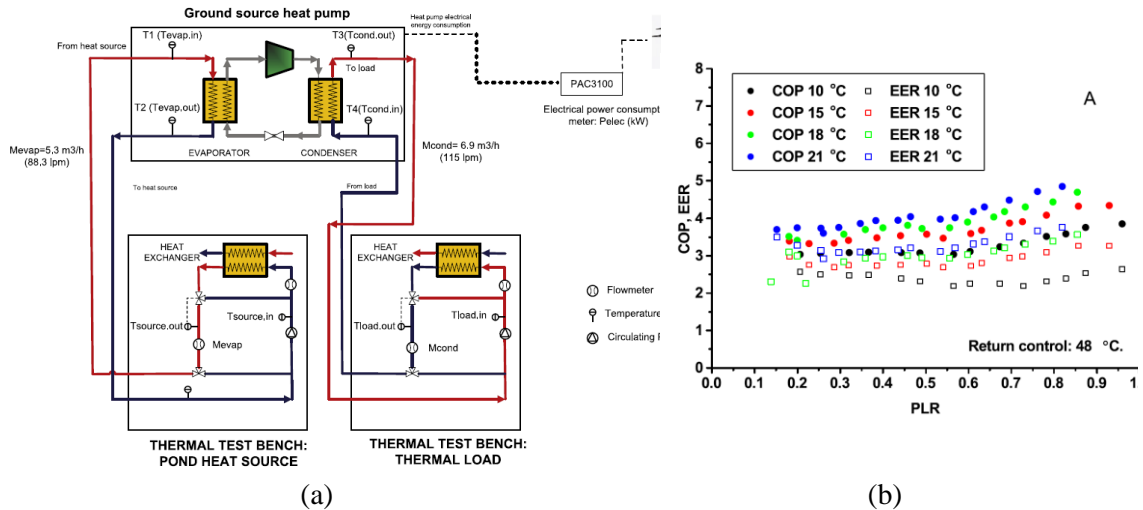


Figure 6. Experimental setup (a) and graph showing the COP and EER in function of the part-load ratio (PLR) (b).

This laboratory study (Waddicor et al. 2016) was conducted to evaluate the influence of fixed set-point control strategies on the partial load behaviour of a water-to-water heat pump of 40.5 kW heating capacity. Experimental results indicate that the control configuration is highly influential on the heat pump cycling response and efficiency degradation at part load. Deterioration of energy performance occurred mainly during system start-up, with additional efficiency loss caused by short cycling for supply temperature control at low loads. It was concluded that a minimum of 20 min compressor run time is necessary to reduce degradation effects, suggesting that installers and heat pump manufacturers should ensure minimum operation times to improve systems efficiency. Comparison of models and experiments indicate that it is important to adequately account for both stand-by and start-up efficiency losses for improving predictions of part load performance by steady-state heat pump models. The experimental setup as well as one result graph are shown in Figure 6. This project has been done in the framework of EU project TRIBUTE (<http://www.tribute-fp7.eu/>).

2.3.3. Study 3. Testing of a novel micro-CHP unit for buildings

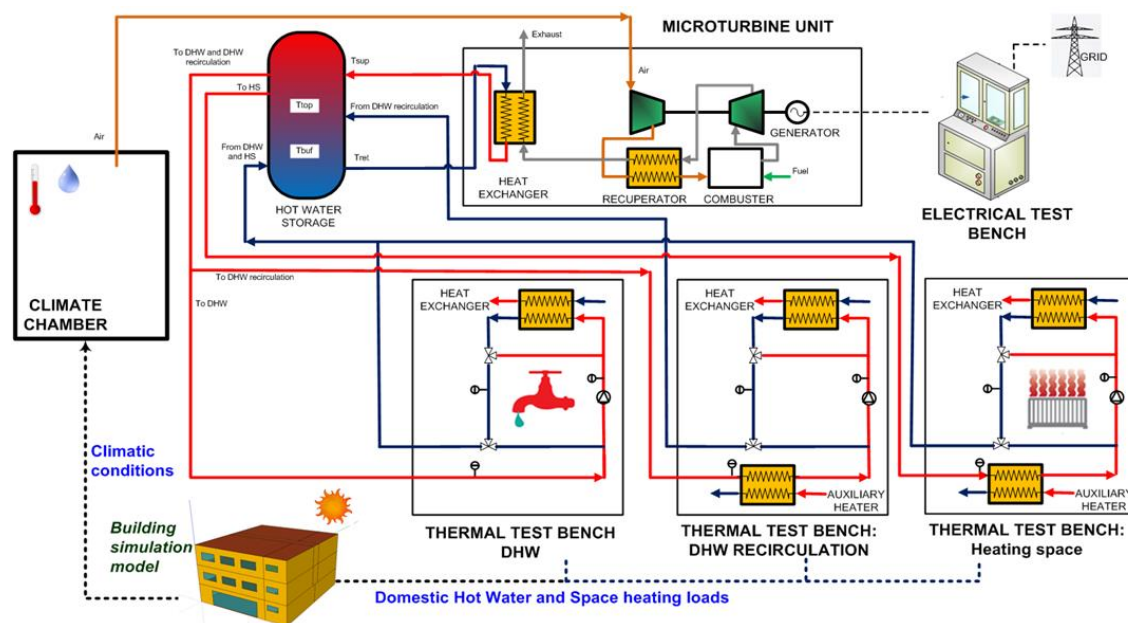


Figure 7. Scheme of the experimental setup for the mCHP test.

The objective of the testing at IREC's laboratory consists of the determination of the thermal and electrical performance of the MTT micro-turbine CHP under dynamic conditions by means of semi-virtual testing.

This virtual system created with the software TRNSYS has been integrated together with the electrical and thermal test benches configuration in the laboratory to emulate the thermal loads of the building in order to make the mCHP unit to operate as if it was installed in the actual building. The MTT EnerTwin micro turbine-CHP (m-CHP) was installed in the IREC's test laboratory, which is provided with 164 m² surface and a 549.73 m³ room volume (ambient temperature between 18 and 24C). The heat and electrical energy production from the m-CHP are measured and controlled by means of high precision measurement and control elements installed in a set of thermal and electrical test benches. The thermal energy from the m-CHP will be used to charge a 1000 l buffer tank, which delivers heat to provide the DHW (Domestic Hot Water) and space heating according to the implemented consumption profiles from a building model. Inlet air to the microCHP is previously conditioned for temperature

and humidity control in the climate chamber, which is placed at about 12 m pipe length from the system. The experimental tests consisted of the operation of the microCHP unit under dynamic conditions during 24 h for selected days of the year, in which heating space and domestic hot water consumption were emulated for a hotel building in the BCN and Zurich climates. For the test, the hot water tank was directly connected to a thermal test bench for DHW demand emulation and a second test bench for space heating emulation. A third test bench was employed to emulate the recirculation circuit for DHW. For the conditions in which the thermal energy from the m-CHP is not sufficient to cover the heat demand from the building, a virtual auxiliary heater is implemented in the DHW and heating space circuits, which is emulated with the required heating loops.

The experimental setup is shown in Figure 7. These tests have been supported by KIC InnoEnergy.

2.4. Maintenance and collaborations

The SEILAB laboratory is run and managed by IREC, the Catalonia Institute for Energy Research, which headquarters are situated in Barcelona, Spain. The SEILAB facilities are situated in a branch of IREC in Tarragona. Around five full-time employees are maintaining, organizing and using the lab facilities.

The SEILAB is collaborating in numerous projects with different partners:

- Direct contracts for equipment testing, development of technical solutions, improvement of systems, etc.
- Partnership for national / international R&D projects: EU, KIC-EIT, Horizon 2020
- Donation of equipment for expanding the laboratory structure
- Shared developments for new products

2.5. Additional information

Additional information can be found at www.irec.cat or on demand.

2.6. Relevant publications

Y.J. Kim, E. Fuentes and L.K. Norford. 2016. "Experimental Study of Grid Frequency Regulation Ancillary Service of a Variable Speed Heat Pump." *IEEE Transactions on Power Systems* 31(4):3090–99.-

D.A. Waddicor, E. Fuentes, M. Azar and J.Salom. 2016. "Partial Load Efficiency Degradation of a Water-to-Water Heat Pump under Fixed Set-Point Control." *Applied Thermal Engineering* 106:275–85. Retrieved (<http://dx.doi.org/10.1016/j.applthermaleng.2016.05.193>).

E. Fuentes, D. Schaefer and J. Salom. 2014. On the impact of realistic domestic hot water demand profiles on thermal storage stratification and energy efficiency. Eurotherm seminar 99. 28-30 May 2014, Lleida, Spain.

E. Oró, A. Garcia and J. Salom. 2016. "Experimental and Numerical Analysis of the Air Management in a Data Centre in Spain." *Energy and Buildings* 116:553–61. Retrieved (<http://dx.doi.org/10.1016/j.enbuild.2016.01.037>).

3. Energy Smart Lab - IREC



Institution / Department

IREC – Catalonia Institute for Energy Research
Energy Efficiency in Systems, Buildings and
Communities - Electric Engineering Area



Location of the test facility

IREC BARCELONA
Jardins de les Dones de Negre, 1, Floor 2
08930 SANT ADRIÀ DE BESÒS (Spain)
Tel. +34 933 562 615

Contact persons

Mr. Manel Sanmartí
Head of Electric Engineering Area
msanmarti@irec.cat
Tel. +34 933 562 615 Ext. 222

Dr. Cristina Corchero
Head of Energy Systems Analytics Group
ccorchero@irec.cat
Tel. +34 933 562 615 Ext. 103

3.1. General presentation

The Energy Smart Lab is an infrastructure conceived as a flexible and versatile platform for innovative technological developments for both industry and competitive R+D projects. The areas of expertise of this laboratory pivot around the following technologies:

- Power Electronics for the integration and control of the elements within a building or community: Renewable Energy Sources (RES), Energy Storage Systems and Electric Vehicles (EV)
- ICT Platform for smart communications and energy management of systems, building, networks and communities.
- Energy System Integration technologies for smart and flexible buildings and grids including RES and EV

The laboratory operation is based on the hardware emulation approach, which allows for real physical equipment to be operated under a broad range of scenarios without depending on the real occurrence of the boundary conditions suitable for the experimental validation. The laboratory is pioneer in addressing the concept and implementation of Microgrids and aims to become a leading experimental facility for improving the optimal development of Flexible Energy Buildings and Flexibility Aggregation at community level.

3.2. Description of the test facility

4.1.1. 3.2.1. General principle and testing possibilities

General testing principles

The Energy Smart Lab test facility is composed of an electricity network which interfaces a set of real devices that inject or withdraw energy to/from it. All such devices include control hardware able to communicate with a centralized system called Building Management System (BMS). The BMS is responsible for the coordination of the power injected/withdrawn into/from the electrical grid in order to ensure power balance at the point of common coupling with the grid supply. The BMS includes an interface with the virtual system, which completes the experimental setup. Virtual components are aimed to provide this facility with the capability to implement a significant number of different testing scenarios, as it includes the following functionalities:

- Building simulation model: thermal inertia and thermal loads of a building or community can be co-simulated with a building model.
- System Operator and Aggregator simulation models: the interaction with remote control actions carried out by electricity System Operators or flexibility Aggregators can be simulated as well.
- Grid simulation model: the physical interaction of the building with the grid power supply can be simulated enabling the experimental validation of flexibility services to the network.

The general concept of the testing facility is summarized in Figure 8.

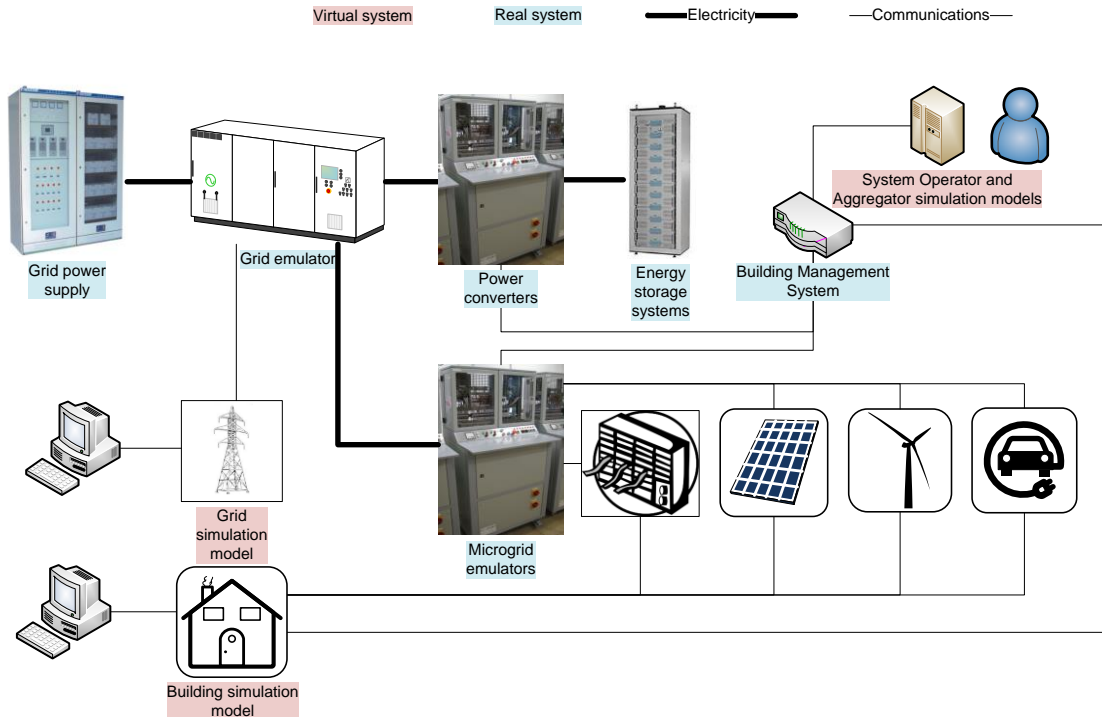


Figure 8. General concept of the IREC Energy Smart Lab testing facilities.

4.1.2. 3.2.2. Equipment available and specifications

Energy storage systems

Different energy storage technologies are available in the laboratory, as presented in Figure 9. They are used to conduct experimental research on storage integration in buildings, communities and power grids.



Figure 9. Energy storage systems: flywheel (left), Li-ion battery (middle) and ultracaps (right).

The main specifications are summarized as follows:

- Flywheel: maximum stored energy 15 Wh, rated power 5,5 kW, maximum speed 3000 rpm, motor technology permanent magnet synchronous machine, efficiency 85-90%

- SAFT Li-ion battery: maximum stored energy 20000 Wh, rated power 150 kW, rated discharge current 200 A, rated charge current 34 A, operating voltage 189 V – 227 V – 254 V, capacity 82 Ah
- Ultracapacitors: maximum stored energy 57 Wh, rated power 10 kW, rated current 20 A, peak current (<1s) 200 Apk, operating voltage 250 V – 500 V, capacity 1,65 F
- Electric vehicle second life battery: maximum stored energy 23300 Wh, rated power 40 kW, rated current 150 A, operating voltage 240 V – 400 V, capacity 32 Ah

Power converters / Microgrid emulators

It is possible to emulate the electrical behavior of different Renewable Energy Sources and building or community demands through the so-called Microgrid emulators (see Figure 10). Emulation is the ability to reproduce power profiles with the aim of obtaining the same output than the real element, such as PV units, electric vehicle charge events or household appliances. Microgrid emulators are power converters with the following specifications:

- Total available Microgrid emulators: 5 cabinets
- Rated power: 4 kVA
- Configuration: back-to-back converters, bi-directional power flow
- Operation mode: active and reactive power set point following



Figure 10. Overview of the microgrid: microgrid emulators (back), electric vehicle (right) and data acquisition and control system (front).



Figure 11. Grid emulator.

Grid emulator

The Microgrid elements can be directly connected to the laboratory power supply or to the so-called Grid emulator (see Figure 11). This device is a configurable voltage source used to emulate a set of power network conditions impacting on the building or community. In particular, it can be configured to simulate rural networks (weak grids) as well as different power quality issues including frequency excursions or voltage harmonics (non-exhaustive list). The main technical specifications are summarized as follows:

- Rated power: 200 kVA
- Rated current per phase: 350 A
- Rated current per neutral conductor: 35 A

Other equipment

Other devices are available in the lab:

- One 9-phase motor-generator test bench (30 kVA)

- Three 3-phase motor-generator test benches (3 x 5 kVA) of different generator technologies: permanent magnet synchronous generator, doubly-fed induction generator and squirrel cage generator.

4.1.3. 3.2.3. Data acquisition and control

The control and communications architecture of the microgrid is composed of three layers, as can be observed in Figure 12. In the top one, called service layer, the microgrid can interact with high-level control and management systems, either locally or remotely. In the middle layer, the low-level control takes place in the so-called local concentrators. Such concentrators are data gateways to enable operability of storage systems and emulators with the service layer. Finally, the bottom layer, called configuration layer, aims at providing a means to configure and monitor all devices before and during the execution of tests.

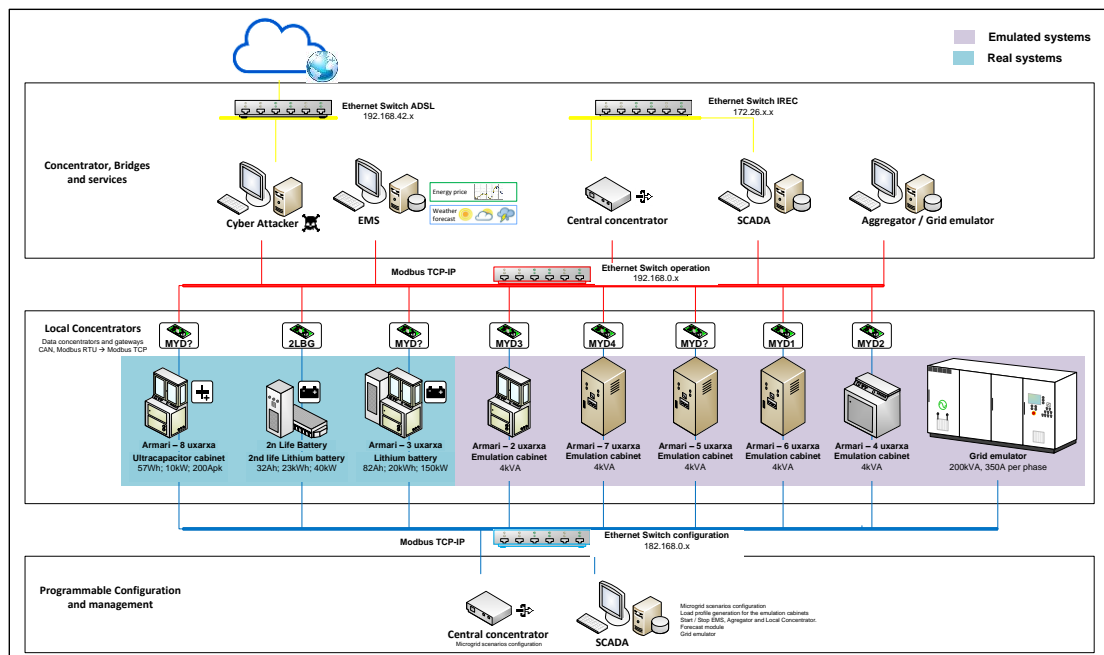


Figure 12. Data acquisition, control and communications architecture of the microgrid.

3.3. Example of previous studies

4.1.4. 3.3.1. Study 1: Analysis and Experimental Implementation of Grid Frequency Regulation using Behind-the-Meter Batteries Compensating for Fast Load Demand Variations

This study (Kim, Del-Rosario-Calaf, Norford 2017) proposes a new grid frequency regulation (GFR) scheme using behind-the-meter battery energy storage systems (BESSs). The fast dynamic responses of the electrical BESSs enable buildings to compensate for the high-frequency components of load demand variations, through direct load control (DLC). An electrical system in a building, along with its building-level and device-level controllers, is considered to address the difficulties in the application of DLC, especially in communicating with several small-scale BESSs. A small-signal analysis is carried out using the aggregated responses of the generators and the DLC-enabled buildings to investigate the proposed GFR scheme, particularly with respect to the feedback controllers for the buildings. Simulation studies are performed using a test grid for various penetrations of the DLC-enabled buildings,

and the test grid is implemented using a laboratory-scale microgrid. The proposed GFR is effective in reducing the frequency deviations and required reserve capacity of the generators, which is achieved by making small variations in the state-of-charge of the behind-the-meter battery. The experimental setup utilized in this study is presented in Figure 13.

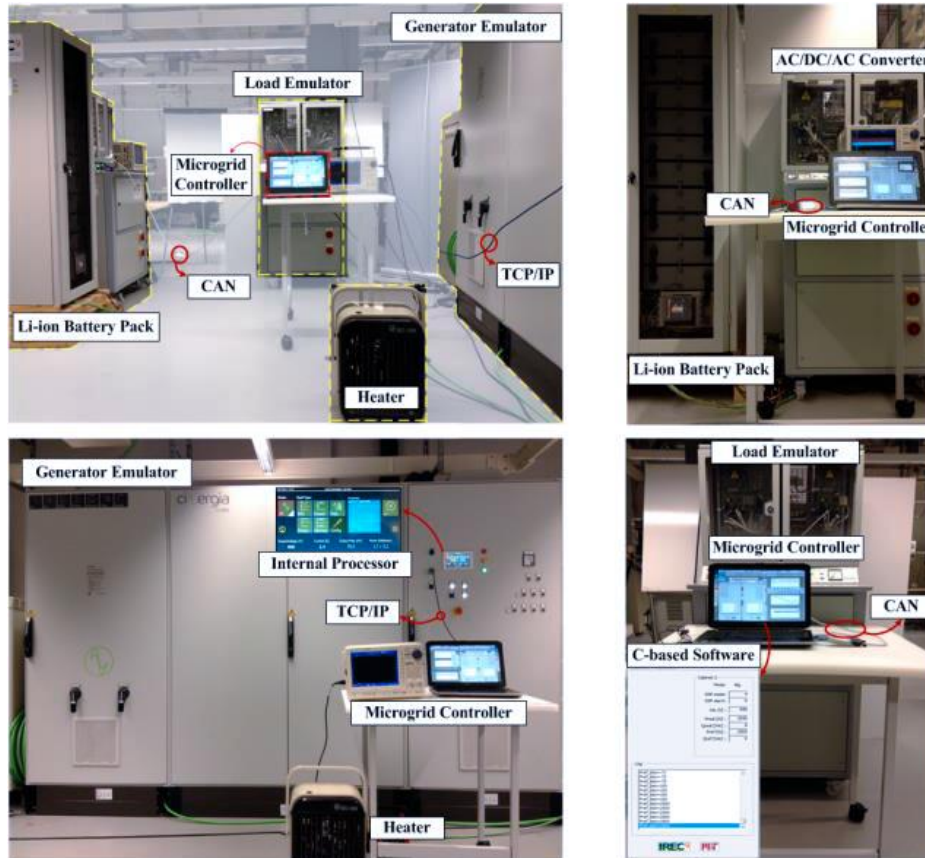


Figure 13. (a) Experimental setup for the implementation of the test grid including (b) a generator emulator, (c) a Li-ion battery pack, and (d) a load emulator.

3.3.2. Study 2: A Real-Time Commercial Aggregator for Distributed Energy Resources Flexibility Management

The paper (Lipari, Del-Rosario-Calaf, Corchero, Ponci, Monti, in press) describes the implementation of a real-time Commercial Aggregator, that pools the generation and/or consumption flexibility offered by its customers to provide energy and services to actors within the system. Results of the emulations carried out in the scope of the FP7 European project IDE4L are presented, highlighting the effects of the participation of DERs and Microgrids to the congestion management by offering flexibility products through the involvement of the Commercial

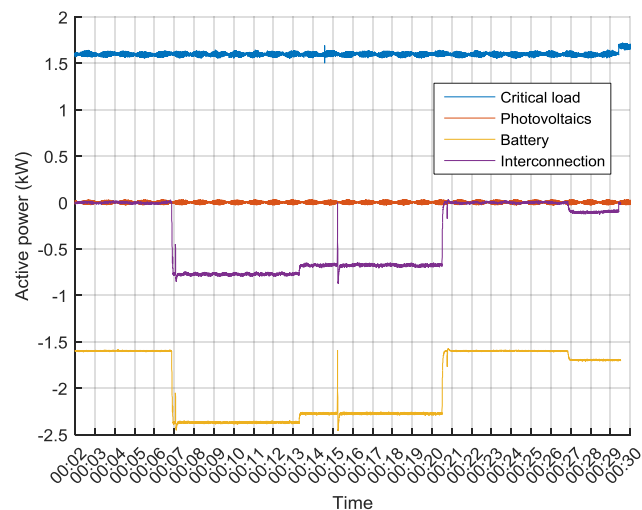


Figure 14. Active power measurements during flexibility delivery at customer's premises.

Aggregator (CA).

3.4. Maintenance and collaborations

The Energy Smart Lab is run and managed by IREC, the Catalonia Institute for Energy Research and its facilities are located in Barcelona, Spain. Seven full-time employees are maintaining, organizing and using the lab facilities on average.

The Energy Smart Lab is collaborating in numerous projects with different partners:

- Direct contracts for equipment testing, development of technical solutions, improvement of systems, etc. Example: pre-certification tests of Electric Vehicle charging infrastructure
- Partnership for national / international R&D projects: EU, KIC Innoenergy -EIT, Horizon 2020. Example: laboratory-scale tests for the validation of ICT platforms for the optimal management of Microgrids
- Donation of equipment for expanding the laboratory structure. Example: integration of a Second Life Electric Vehicle Battery for stationary applications in the Microgrid
- Experimental test site for researchers. Example: development of a proof-of-concept setup for novel applications of Flywheels to expand Wind Power Plant capabilities
- Joint research with other laboratories. Example: development of tests in coordination with SEILAB laboratory to validate Building and Aggregator control implementations.

3.5. Additional information

Multimedia

A video presenting the lab can be found at the following address:

<https://vimeo.com/111393514>

More details can be found at the following address:

<http://www.futured.es/en/capability/?prettyUrl=irec>

3.6. Relevant publications

- Y.J. Kim, G. Del-Rosario-Calaf and L.K. Norford. 2017. "Analysis and Experimental Implementation of Grid Frequency Regulation using Behind-the-Meter Batteries Compensating for Fast Load Demand Variations" IEEE Transactions on Power Systems, vol.32, no.1, pp.484-498.
- G. Lipari, G. Del-Rosario-Calaf, C. Corchero, A. Monti and F. Ponci. In press. "A Real-Time Commercial Aggregator for Distributed Energy Resources Flexibility Management", in Sustainable Energy Grids and Networks.
- L. Igualada, C. Corchero, M. Cruz-Zambrano and F.J. Heredia. 2014." Optimal Energy Management for a Residential Microgrid Including a Vehicle-to-Grid System" IEEE Transactions On Smart Grid, vol. 5, no. 4, pp. 2163-2172.
- G. Del-Rosario-Calaf, M. Cruz-Zambrano, C. Corchero and R. Gumara-Ferret, "Distribution network congestion management by means of electric vehicle smart charging within a multi-microgrid environment," Electric Vehicle Conference (IEVC), 2014 IEEE International, Florence, 2014, pp. 1-8.

4. Nearly-zero Energy Building Emulator – Aalto University



Institution / Department

Aalto University
School of Engineering
Department of Mechanical Engineering
Laboratory of Energy Efficiency and Systems



Location of the test facility

Aalto University, building K4
Sähkötiehen tie 4M
02150 ESPOO (Finland)



Contact persons

Dr. Ala Hasan
Senior Scientist,
VTT Technical Research Centre of Finland
ala.hasan@vtt.fi

Dr. Simo Kilpeläinen
Laboratory Manager,
Aalto University
simo.kilpelainen@aalto.fi

4.2. General presentation

The nearly-zero energy building (nZEB) emulator is a platform for studying the performance of a building with different renewable energy production and storage equipment fitted into a fully functional system operating in Finnish climate conditions. The platform is based on a semi-virtual approach comprising of real components for energy generation, conversion and storage connected with a simulated building and a ground source heat pump borehole. This arrangement makes the system very flexible as different types and sizes of buildings may be studied by simply changing the simulation model. The system is also equipped with an energy management system (EMS) developed at VTT which can direct energy flows in an optimal way by assessing the current and future energy status as well as the availability of renewable sources (sun, wind). The nZEB emulator platform is a unique facility for assessing the real-time performance of advanced energy solutions and investigating the energy-flexibility in buildings towards achieving set targets in the building and requirements by the grid.

4.3. Description of the test facility

4.3.1. General principle and testing possibilities

General operation principles

The general operation concept of the nZEB emulator is presented in Figure 15. The platform is designed to resemble a single-family house with respect to component sizing but the operation can be scaled to match different building types. The actual building is a TRNSYS simulation running in a computer and the physical devices are operated according to electricity and heating demands given by the simulation at six minute (changeable) intervals. The physical part of the system is operated in real-time and according to real weather conditions as there is no weather chamber. The platform is equipped with an energy management system (EMS) which optimizes the energy use and flows by assessing the energy prices and weather. The general uses for the platform are as follows:

- Analysis of local energy matching in buildings
- Performance evaluation of different control strategies for achieving optimal use of energy resources
- Gathering of high-resolution data from the various components for validating component models used in simulations and optimizations

Examples of research possibilities

- Experimental testing of novel energy solutions related to local production and storage of electricity and heat such as PV panels, solar thermal collectors, microwind turbines, heat pumps, batteries and heat storages
- Development and testing of new control strategies for energy systems in smart buildings
- Monitoring and recording the behaviour of different components present in the system
- Using the data to calibrate the models for building simulation tools

- Optimization of energy flows in order to improve energy generation/demand matching and interactions with bidirectional future hybrid smart grids of electricity and heating
- Evaluation of modelled electric/hydrogen vehicle as a part of the nZEB concept
- Evaluation of the energy flexibility performance of building's energy systems e.g. for minimizing operating energy costs, environmental impacts or responding to grid requirements.

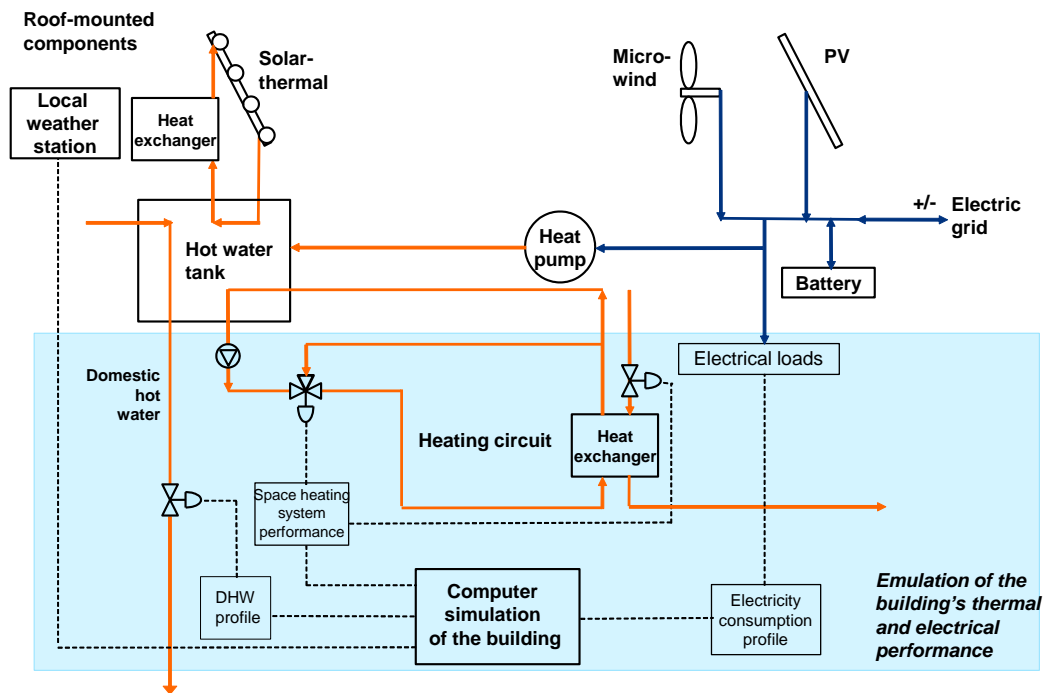


Figure 15. Operation and basic component diagram of the emulator platform.

4.3.2. Equipment available and specifications

PV panels



Figure 16. PV panels and microwind turbine on the roof of the K4 building.

A PV plant consisting of 18 panels in two rows is installed on the roof of the lab (Figure 16). The panels have a nominal capacity of 240 Wp each, totalling 4.32 kWp. Both panel rows are equipped with separate SMA Sunny Boy 2000 HF inverters, and the production is monitored at one minute resolution via a Bluetooth interface.

Microwind turbine

In addition to PV panels, a Finnwind Tuule E200 microwind turbine with a rated capacity of 4 kW has been installed onto the roof (Figure 16). The turbine is located at the top of a 9 meter high steel mast, accounting for a 25 meter total distance from the ground level. The turbine automatically rotates towards the wind direction and is equipped with storm protection which turns it away from the wind if the gusts become too powerful. The wind plant is equipped with an SMA Windy Boy 3600 TL inverter which, like its PV counterparts, is monitored at one minute resolution via Bluetooth.

Island electricity network

The PV panels and the wind turbine are connected to an island electricity network via an SMA Sunny Island 6.0H inverter (Figure 17). The island network is equipped with a 48 V, 200 Ah battery (four 12 V 200Ah lead acid batteries in series), and also contains ten 600 W electric heaters which emulate the electricity loads of a house according to the simulation's load profiles. The battery state-of-charge is monitored by the inverter and communicated to a computer via an Ethernet cable.



Figure 17. PV and island network inverters.



Figure 18. Flat-plate solar collectors on the roof of the K4 building.

Solar thermal collectors

For heat production, two sets of four solar thermal collectors have been installed on the roof (Figure 18). One of the sets consists of Oilon Solarpro flat-plate collectors whereas the other one contains AMK-Solac OWR 12 evacuated tube collectors. Each set has a capacity of ~4 kW at typical Finnish summer conditions and is equipped with a Sonnenkraft SKSC3+ controller/pumping station which controls the brine flow rate in the circuit.

Ground source heat pump (GSHP)

The other method for heat production in the platform is an Oilon Geopro GT 5 ground source heat pump with a nominal capacity of 5 kW (Figure 19). There is no real ground borehole so a hydraulic circuit including a 500 liter buffer tank filled with brine is used as a heat source

for the GSHP. The brine flowrate and return temperature are emulated according to the borehole output results from the TRNSYS simulation. The buffer tank is heated up by the rejected heat from the system that would normally be used for the space heating of the building.



Figure 19. Ground source heat pump.

Hot water storage

The emulator platform is equipped with three Akvaterm Akva Solar hot water storage tanks (Figure 20). Two of the tanks have a capacity of 500 liters while the third is slightly smaller at 300 liters. Each tank is equipped with three heating coils (solar thermal, DHW pre-heating, DHW heating). There is a plate with a small opening in the middle of the tank for separating the top and bottom parts from each other. The temperature stratification is monitored by five thermocouples placed inside the tank at different elevations. One of the 500 liters tanks is equipped with a 6 kW electric heater and the 300 liters tank is prepared for the future implementation of phase-change materials as a heat storage. The storage tanks have flexible connections so it is possible to have them in a series or a parallel configuration, or a combination of the two.

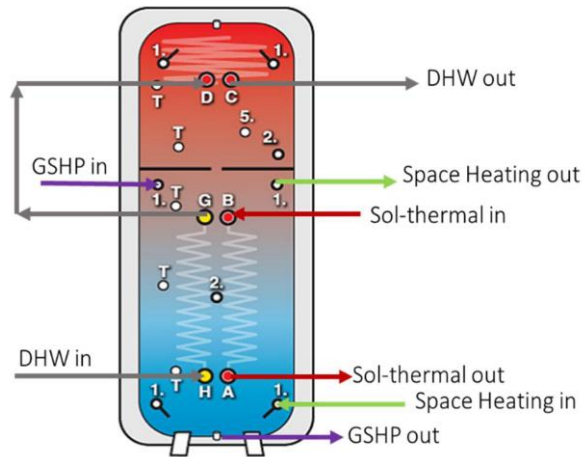


Figure 20. One of the hot water tanks, and schematic of the storage tank connections.

Other equipment

- Vaisala AWS330 weather station for measuring temperature, humidity, wind speed/direction and solar irradiance
- Water-to-air heat exchanger on the roof for emulating export of excess solar thermal heat into district heating network

4.3.3. Data acquisition and control

The majority of the components in the emulator platform are controlled by a Labview-based software developed at Aalto University (Figure 21). This software is also used for data acquisition from the roughly 100 thermocouples, resistance temperature detectors (RTDs) and flow sensors the system is equipped with. The sensor data is collected mainly via National Instruments DAQ modules connected to the computer via USB ports.

The production facilities (PV, wind turbine, solar thermal collectors) are operated by their own factory-supplied controllers and their data is acquired via dedicated software, written into CSV files and then read into the Labview main program.

The rest of the system is controlled with PID and on/off controllers written into the Labview program. For supplying control voltage (0-10V) to the various actuators, pumps etc., Measurement Computing USB analog voltage modules are used.

Besides acting as the data acquisition and control hub of the system, the Labview program also acts as an user interface for operating the system, and communicates with the simulation software (TRNSYS) containing the building and the GSHP borehole as well as with the energy management system which gives decisions on how to direct the different energy flows in the system. The communication between Labview and the other software is done via text files.

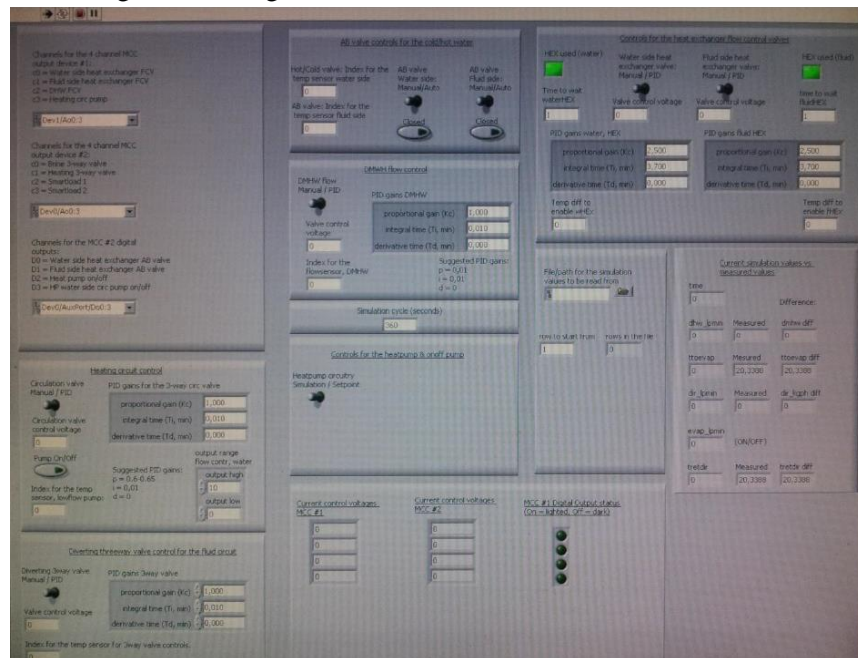


Figure 21. Screenshot of the Labview interface.

The heat and electricity demands of the building under investigation are calculated at fixed time intervals (currently six minutes) by the TRNSYS simulation program and then supplied to the physical part of the system via Labview. While the simulation calculates the heating demands and the space heating water return conditions, it uses typical profiles for the household electricity consumption and domestic hot water DHW, along with the prevalent weather conditions. In addition to providing energy demands, TRNSYS also simulates the GSHP borehole and gives Labview the temperature of the brine returning from the ground to the heat pump.

The energy management system (EMS) is a Matlab-based program which optimizes the energy flows in the system based on a successive linear programming (SLP) approach (Ruusu et al., 2016). While nonlinear methods are generally preferable, this approach works well here since the problem set is mostly linear and the real-time operation of the system calls for a fast algorithm. With the help of real-time and forecast energy pricing and weather data, EMS can

instruct the system on how to deal with locally produced and imported energy i.e. to cover the demand, convert or store the energy in the same or another form (e.g. electricity to heat), or to export/import to/from the connected networks. The EMS is connected to the online Nordpool spot electricity pricing database as well as to online weather forecast from the Finnish Metrological Institute. In its current iteration, EMS manages the temperature set points for the GSHP, electric heater and excess solar heat export, as well as decides when and at what portion to import/export/store electricity in the batteries.

4.4. Example of previous studies

The first task of the emulator platform is to provide experimental data for a joint Aalto/VTT Finnish Academy project dealing with nearly-zero energy buildings and supply/demand matching. In this project, the emulated building is a 150 m² well-insulated Finnish single-family house with four occupants. The emulator is operated for two full calendar years with the first one having finished in spring 2016 and the second one to finish in late 2017.

In the first year, the system was run with its original components and settings, and the results were analysed both to study the operation and performance of the different components, and to come up with ideas of improvement for the second year of operation. In general, the system performed reasonably well. There were a couple of issues with the most notable one being the poor performance of the batteries in the PV/wind system. To give an example of the data analysis, Figure 22 shows the monthly onsite energy fraction (OEF) and onsite energy matching (OEM) indices for electricity during a six-month period from Sep 2015 to Feb 2016. The OEF (demand cover factor) is the portion of the total electricity consumption covered by local production whereas the OEM (supply cover factor) is the portion of self-consumption from the total local electricity generation. As can be seen from the figure, OEF is high during autumn when there is still PV generation whereas OEM is better in winter when the constant electricity demand due to heating is high.

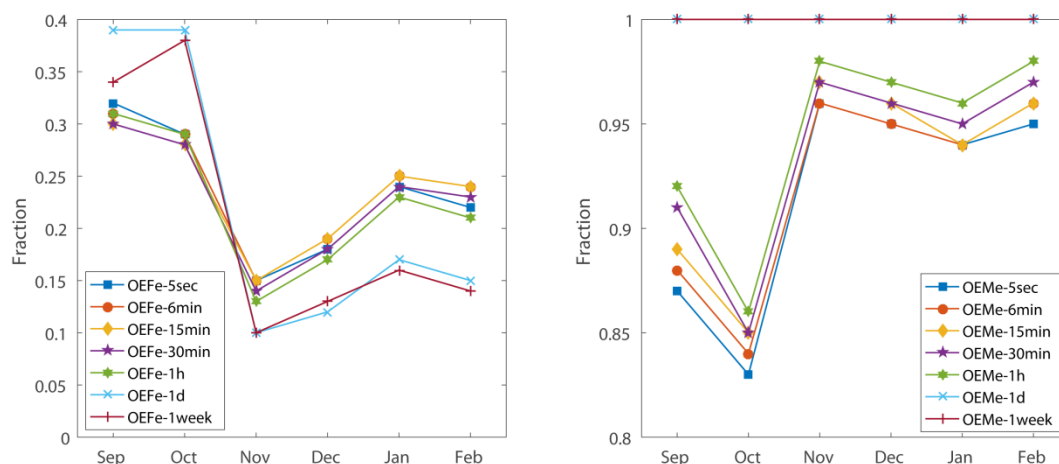


Figure 22. Monthly average matching indices OEF and OEM at different time averaging intervals.

After year one was finished, some modifications and additions were made for the second year during a maintenance break lasting several weeks. The most notable changes were the additions of the intelligent EMS software as a master controller of the system (done in early 2017), and a heat exchanger on the roof for emulating heat export from the solar thermal system to the district heating grid. The batteries of the PV and wind plants were replaced as the original ones had reached the end of their lifetime. On the simulation side, TRNSYS was set

to use real-time weather data from the weather station instead of a weather profile from the past.

The extensive analysis of the data from year two will be done later but the preliminary results show that the issues that were present in the first-year data are resolved. The EMS seems to be performing according to expectations although it won't be put into a real test until summer 2017 when it has more options to consider.

4.5. Maintenance and collaborations

The nZEB emulator is run and maintained by the Laboratory of Energy Efficiency and Systems at Aalto University. Currently, the operation is mainly handled by Dr. Kilpeläinen, with a laboratory technician helping with maintenance and new hardware installations

Currently, the emulator is operated year-round for providing data to a Finnish Academy research project dealing with nearly-zero energy buildings and supply/demand matching. In the future, research projects in collaboration with companies developing new technology for renewables and/or control systems, as well as international partners dealing with similar topics can be expected.

4.6. Relevant publications

R. Ruusu, S. Cao, A. Hasan, J. Kortelainen and T. Karhela. 2016. "Developing an Energy Management System for Optimizing the Interaction of a Residential Building with the Electrical and Thermal Grids". CLIMA 2016 – Proceedings of the 12th REHVA World Congress: Vol 10 (2016).

5. Labs in EnergyVille



Institution

EnergyVille

KU Leuven – VITO – IMEC

<http://www.energyville.be>

Fehler! Linkreferenz ungültig.

Locations

Campus EnergyVille

Thor Park 8310

Be-3600 Genk (Belgium)

Tel +32 (0)14 33 59 10

E-mail: info@energyville.be



Contact person

Marcel Stevens

marcel.stevens@vito.be

5.1. General presentation

The EnergyVille laboratory facility provides a modern, high-end environment for testing and developing solutions for renewable energy integration in electrical and thermal systems. The EnergyVille laboratory facility consists of 5 dedicated laboratories which are linked to specific domains of expertise: Battery Testing Lab, Home Lab, Polyline Medium-Voltage Smart Energy System Lab, Matrix Lab and Thermo-technical Lab.

Each of the laboratories is equipped with state-of-the-art measurement equipment and data-acquisition systems to facilitate high-end research in the specific sub-domains. Moreover, all laboratories are physically interconnected to enable the integrated testing of innovative technologies for electrical and thermal systems. As such the entire EnergyVille building with its laboratories and offices can act as an integrated test facility.

5.2. Description of the test facility - Battery Testing Lab

5.2.1. General principle and testing possibilities

EnergyVille has one of the most extensive battery testing labs in Flanders, consisting of multiple battery and cell testers and a flexible setup. EnergyVille uses its infrastructure to evaluate ultra-capacitors, battery cells, battery components and materials. Also, systems using batteries or battery management systems can be evaluated.



Figure 23. Illustration of battery testing.

General testing possibilities

Batteries and ultra-capacitors exist in many types. Selecting the optimal one for an application is a complex matter, moreover since within each chemistry type (Lithium-Ion, Nickel-metal hydride...) exist several subtypes. The actual performance and lifetime of a specific application can only be determined by testing.

EnergyVille can perform tests according to any customer specified profile. We have elaborate experience in developing custom efficiency test procedures that are equivalent to actual application cycles (electric vehicles, solar batteries...).

EnergyVille offers performance and lifetime tests according to international standards:

- Static capacity tests at various discharge currents
- Constant power discharge tests
- Hybrid pulse power characterisation tests
- Self-discharge tests
- Cold cranking tests
- Thermal performance tests
- Energy-efficiency tests
- Charge sustaining cycle life tests
- Charge depleting cycle life tests

- Calendar life tests

Each of these tests can be performed at various temperature profiles. Batteries and battery components can also be subjected to several current ripple profiles.

5.2.2. Equipment available and specifications

- **2 PEC SBT8050 battery testers (36kW)**
 - 24 channels in total
 - maximum voltage: 80V per channel
 - maximum current: 600A, max. 12 channels of 50A each
- **2 PEC SBT0550 cell testers (6kW)**
 - 48 channels in total
 - maximum voltage: 5V per channel
 - maximum current: 600A, max 12 channels of 50A each
- **1 PEC ACT0550 cell tester (16kW)**
 - 40 channels in total
 - Maximum voltage: 5V per channel
 - Maximum current: 250A, max. 5 channels of 50A each
- **Triphase 75kW inverter**
 - maximum voltage: 700V
 - maximum current: 160A nominal, 200A peak
- **Triphase 30kW inverter**
 - maximum voltage: 700V
 - maximum current: 96A nominal, 144A peak
- **1 VMP3 from Biologic with 8 independent potentiostat/galvanostat channels including electrochemical impedance spectroscopy (EIS) measurement.**
 - Current ranging from 10 μ A up to 5A with a resolution of 0.0033% of FSR
 - Voltage ranging from 0 to 10V with a resolution of 0.0033% of FSR
 - Frequency range 1 MHz to 10 μ Hz (accuracy: 1%, 1°)
 - Amplitude potentiostat: 1 mVpp to 1 Vpp
 - galvanostat: 0.1% to 50% of the current range
- **Associated temperature chambers**
 - temperature range: -20°C – +55°C

5.2.3. Data acquisition and control

Data-acquisition is performed by the battery and cell testers. The voltage-, current- & temperature measurements of each individual test channel are logged on 1 second base. The Battery Testers are periodically calibrated according to the ISO 9001 Quality Management System.

5.3. Description of the test facility – Home Lab

5.3.1. General principle and testing possibilities

The EnergyVille Home Lab is a real life test infrastructure for home energy management systems, residential demand response technologies and in home communication systems. Specifically, the Home Lab enables the testing of residential energy management systems, communication systems, novel optimization algorithms etc. in real life conditions.



Figure 24. HomeLab.

For example, the demand response technologies which were developed in the Linear project were first tested in our Home Lab before integrating them in the participants' houses. Business cases such as maximization of self-consumption, peak shaving, wind balancing and Time Of Use tariffs, etc. were tested.

General testing possibilities

There are two electrical distribution boards, each representing one residential house. A flexible connection system facilitates the configuration of the available appliances, such as a smart washing, a dishwasher, a tumble dryer, a domestic hot water heater etc., in these two houses. Apart from this, there is also the possibility to connect solar panels through a residential PV inverter but also devices from all the other labs in the building can be physically connected to a house in our Home Lab through our Smart Test Grid. This way we are able to integrate a smart charging station, a smart heat pump, microCHP, batteries etc. For example a small LV distribution grid can be set up in which the charging of electrical cars is coordinated, on a parking lot with smart charging stations, based on the production of a central PV station in combination with battery storage. This gives us the opportunity to test systems on the distribution level but also test power quality problems, voltage droop control, etc.

5.3.2. Equipment available and specifications

The EnergyVille Home Lab enables the integrated testing of products and services that are key to the implementation of Smart Grids, such as home energy management systems, residential demand response technology and in-house communication technology.

Peripherals:

- a programmable load (10kW) with a dedicated interface that allows for easy configuration of consumption profiles
- a PV inverter simulator (2.5 kW)
- a PV panel simulator (2 kW)

- multiple types of smart meters, energy management systems, smart plugs
- multiple smart appliances, including state of the art smart washing machines, dishwashers, tumble dryers, air-conditioning and domestic hot water (DHW) buffers
- various battery packs

Inter-lab connections:

- The Home Lab can be connected to the smart grid infrastructure to set up low voltage distribution grid tests.
- The Home Lab can be connected to the Thermo Technical Lab in order to include (smart) heat pumps, μ CHPs and thermal storage components.

5.3.3. Data acquisition and control

The energy consumption of the individual loads is measured with dedicated power meters. The active/reactive power, voltage, current, $\cos\Phi$,... are logged.

5.3.4. Example of previous studies

The Linear research project examined various methods to tailor a household's energy consumption in function of the available wind and solar energy. These methods included new technologies and user interfaces. The major research questions were:

- How does a change in behaviour benefit both households and the industry?
- How are the costs and benefits distributed among the parties involved?
- Which solutions result in sufficient motivation and convenience to prompt a change in behaviour?
- To what extent are households willing and able to adjust their behaviour?

More info:

<http://www.linear-smartgrid.be>

5.4. Description of the test facility – Smart Grid Infrastructure

5.4.1. General principle and testing possibilities

In the Smart Grid Infrastructure Lab, our highly experienced team executes tests and validates:

- power line communication systems in distorted grids.
- long-term automated cycling of Li-ion batteries and reference performance tests.
- research on low voltage distribution grids with a high amount of renewable energy sources
- development & test of VITO Intelligator®: an agent based control algorithm to match supply and demand of energy.
- power quality: voltage dips, phase unbalance, harmonic distortions.
- voltage droop control: taking grid constraints into account by power adjustments.

- inverter control algorithms for unbalanced grid conditions.
- data analysis:
- different energy flows (V, I, $\cos\phi$, ...) are logged in a dedicated SCADA system.
- accurate high speed PQ measurements according to EN 50160.

5.4.2. Equipment available and specifications

The EnergyVille Smart Grid Infrastructure consists of:

- a 150 kVA low voltage AC-grid , connected to:
 - the EnergyVille Home Lab with test facilities for energy management systems and smart domestic appliances.
 - the EnergyVille Thermo Technical Lab with test facilities for heat pumps, μ CHP and thermal storage.
 - extra cable loops.
 - PV systems & simulation equipment
 - EnergyVille's Battery Testing Lab.
- charging station for plug-in hybrids, electric vehicles & electric scooters
- dedicated programmable inverter and converter equipment:
 - 70 kVA inverter as three-phase grid connected inverter, with or without neutral line.
 - inverter as grid independent voltage source that reproduces voltage/frequency.
 - deviations and harmonic distortions.
 - two dedicated 100 A DC-DC converters.
- reconfigurable programmable inverter and converter equipment.
- possible configurations:
 - two 11 kW grid-connected inverters with neutral line
 - three three-phase 11 kW grid-connected inverters
 - one 11 kW grid-connected inverter with three 32 A DC-DC converters
- a 700 V low-voltage DC-grid connected to:
 - a DC-DC converter with battery storage and/or supercapacitor storage.
 - DC-sources such as fuel-cells and PV.
- a 150kW bidirectional DC module, useful to simulate batteries or PV installations as source or batteries or other DC devices as load.

5.4.3. Data acquisition and control

The branches in the test grid are equipped with current and voltage sensors which are connected to a high speed data-acquisition system.

5.5. Description of the test facility – Polyline Medium-Voltage Smart Energy Lab

5.5.1. General principle and testing possibilities

This facility enables to test medium-voltage smart-grid equipment in a three-phase synthetic grid up to the 50th harmonic in realistic condition.



Figure 25. Polyline Medium Voltage Smart Energy Lab.

General testing possibilities

In the EnergyVille Medium-Voltage Smart Energy System Lab, our experienced team offers:

- measurement of voltage and selected current levels on a 36kV 3-phase / 100 kV 1-phase installation
- surge voltage measurements
- partial discharge measurements of components (AC + DC)
- custom measurements and experimental configurations for cases of out of the ordinary use
- pre-certification testing to the applicable standards

The PolyLine system consists of two synergetic facilities:

- a traditional, single-phase AC (50/60 Hz, 100 kV)/DC (100 kV) + impulse (200 kV) facility
- a three-phase synthetic grid up to 36 kV/1000A (5kVA per phase for voltage and current injection), with wide bandwidth (25Hz to 5 kHz) to capture complex system transient and non-ideal behaviours unavailable in traditional testing facilities. It allows equipment, sensors, and protection devices to be exposed to fully user-programmable situations of: unbalance, harmonics, transients, reproduction of recorded grid faults, fluctuations in fundamental frequency, interaction with simulations, etc.

5.5.2. Equipment available and specifications

Equipment

- two mono-phase, partially discharge-free, Haefely transformers of 220V/100kV, 5kVA and 9kVA
- wide-band voltage transformer, 3*36kV/5kVA, separate cores, 25 Hz – 5 kHz
- wide-band current-injection transformers, 1000A, isolated to 36 kV, 5 kVA/core, 25 Hz – 5 kHz (3X)

- power amplifier, tri-phase, 10 Hz - 5 kHz bandwidth, 110 V output
- Marx multiplier for creation of surge voltages up to 200kV
- Saturn Flat isolated measurement system for multi-channel, wide-band registration of low-voltage sensor signals in the high-voltage section
- DMI 551 for measurement of DC, AC and peak voltages
- partial discharge measurement equipment (AC + DC, 3-phase multiplexed capability)
- wide selection of ancillary measurements, such as temperature, current, etc.
- the system can be fed from a local generator, offering exceptionally clean 50/60 Hz wave forms

Extra features

The EnergyVille Medium-Voltage Lab can be connected to EnergyVille's Matrix Lab, Smart Grid Infrastructure Lab, Home Lab and Thermo Technical lab.

5.6. Description of the test facility – Matrix Lab

5.6.1. General principle and testing possibilities

The Matrix Lab enables to measure the electrical and mechanical characteristics of electro-technical equipment, power electronic devices and solar panels.

General testing possibilities

In the EnergyVille Matrix lab, our experienced team executes tests on and validates:

- solar panels and their ancillaries, in controlled climate and irradiation conditions.
- electrical motor, transformer or generator behaviour and efficiency that is subject to variable power and load curves
- measurements on power electronic devices and converters
- interaction between multiple devices and energy modalities
- calibration of power meters
- customised experiments and measurements

5.6.2. Equipment available and specifications

- Multiple, multi-modal sources and loads can be interconnected as desired
- Standard, industrial power available up to 45kW/100kW
- Atlas SolarClimatic Test Cabinet Type SC 2000 MHG
- Test benches for electric motors/generators from 500W to 45/90kW
- Various AC and DC generators
- Controllable sources to generate outputs 0-400V at 64A / 200A
- Various bi-directional, programmable power electronic sources
- Various resistive loads
- Power calibration table with precise three-phase voltage and current control (up to 600A)
- Precision voltage, current, torque, speed, temperature and power measurements
- Remote-controllable using local Ethernet or over the Internet
- Many more capabilities at user's request

5.7. Description of the test facility – Thermo-technical Lab

5.7.1. General principle and testing possibilities

The Thermo-Technical Lab is one of the major research facilities of the EnergyVille knowledge center. It is a multi-functional laboratory infrastructure in which static and dynamic tests on thermal systems (heating and cooling) can be performed.



Figure 26. Thermo-technical lab.

Testing possibilities

- highly accurate measurements of:
- relevant emissions
- energetic performance
- fast response dynamic measurements
- dynamic tests of:
- boilers, burners, control systems, hot tap water appliances...
- cogeneration units: engines, turbines, μ CHP's, ORC's,...
- heat pump systems
- thermal energy storage systems (both sensible and latent heat)
- combinations of systems: heat pumps and thermal energy storage, combined heat and power and thermal energy storage, distributed thermal energy storage, sorption systems
- energy system combination: f.i. a boiler combined with cogeneration and a storage tank
- including renewable energy sources
- including gas, oil, biogas and electricity

5.7.2. Equipment available and specifications

- thermal power up to 1000 kW
- electrical feed-in power to 500 kW (such as CHP, Turbine)
- temperature from 3 °C to 90 °C
- temperature 1/10th DIN 3 point calibration certificate (4-20 mA)
- connection gas or gas mixture through own gas station
- high-end electromagnetic flow measurements with 3 point calibration certificate (4-20 mA)
- logging of all measuring points and control parameters can be set individually (abs, avg, ...)
- both fixed set points as a dynamic profile to 200 ms selectable

- direct coupling with external datasets or dynamic simulation software
- electrical connection of devices with other laboratories using their own lowvoltage test grid
- a modular construction for easy monitoring and control can be added

5.7.3. Data acquisition and control

The laboratory is controlled and measured by an industrial PLC infrastructure, linked to a SCADA package. The devices can be connected directly to the EnergyVille Smart Grid Infrastructure Lab.

5.7.4. Example of previous studies

- Lab testing as part of national and European research projects (FP7 E-hub, Linear, etc.)
- Efficiency testing of gas heaters
- Energy performance testing of micro-turbines
- Boiler characterization
- Comparative testing of latent energy storage
- Intelligent control of heat pump for smart grid peak shaving
- Intelligent distributed thermal energy storage

5.8. Maintenance and collaborations

The EnergyVille laboratories are available for our own experts to conduct experiments for you, or you can get in contact with EnergyVille experts to rent (a part of) the laboratory facilities for your project.

Access to the EnergyVille Laboratories can only be obtained when an EnergyVille representative is present. Access is also limited to persons familiar with the infrastructure. The required test and set-up will always be designed in collaboration with an EnergyVille expert.

5.9. Additional information

Additional information on the EnergyVille laboratory facilities as well as related projects can be found at the EnergyVille website:

www.EnergyVille.be

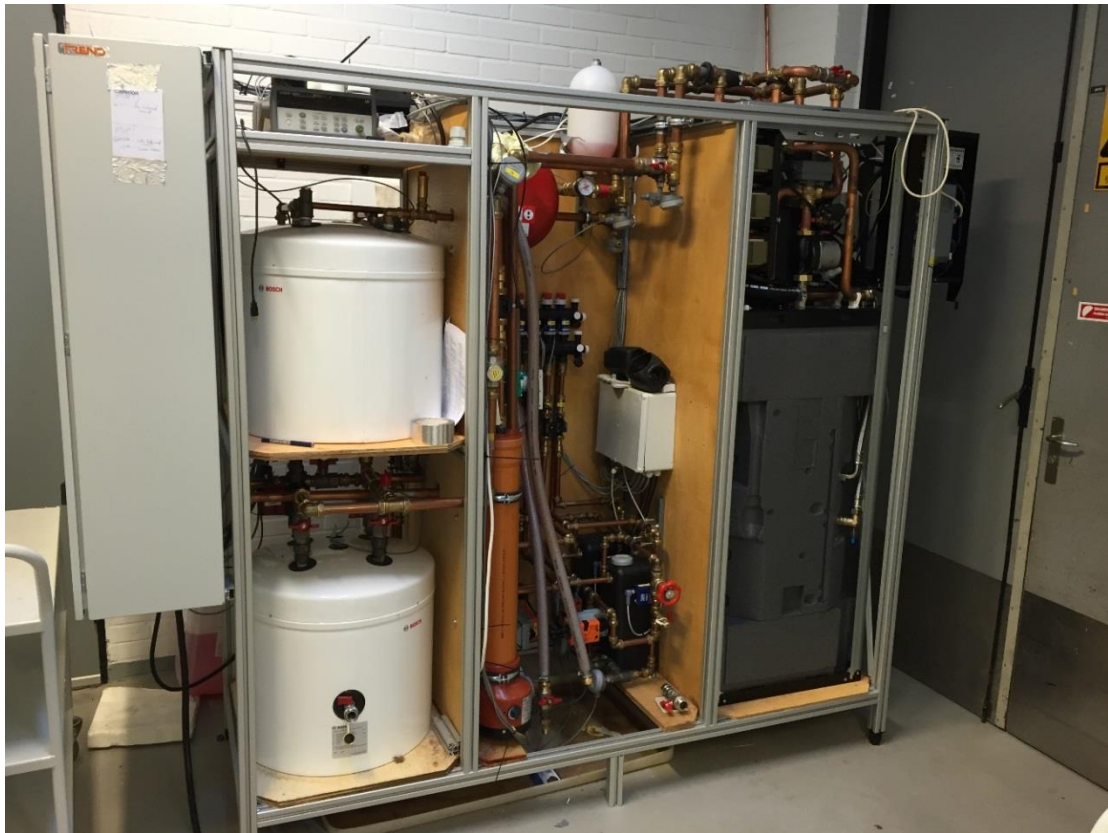
5.10. Relevant publications

Linear consortium. (2014). *LINEAR - Demand Response for Families*. Genk. Retrieved from <http://www.linear-smartgrid.be>

Vanhoudt, D., Geysen, D., Claessens, B., Leemans, F., Jespers, L., & Van Bael, J. (2014). An actively controlled residential heat pump: Potential on peak shaving and maximization of self-consumption of renewable energy. *Renewable Energy*, 63, 531–543. <http://doi.org/10.1016/j.renene.2013.10.021>

- Beerten J. 2013. Modeling and Control of DC Grids (Modellering en controle van DC netten). PhD Dissertation, KU Leuven, Department of Electrical Engineering, Belmans R. (supervisor)Title of Chapter
- Costanzo, G. T., Iacovella, S., Ruelens, F., Leurs, T., & Claessens, B. J. (2016). Experimental analysis of data-driven control for a building heating system. *Sustainable Energy, Grids and Networks*, 6, 81–90. <http://doi.org/10.1016/j.segan.2016.02.002>

6. The OPSYS test rig - DTI



Institution / Department

Danish Technological Institute
Energy and Climate
Refrigeration and Heat Pump Technology



**DANISH
TECHNOLOGICAL
INSTITUTE**

Location of the test facility

Danish Technological Institute
Gregersensvej 2
2630 Taastrup (Denmark)
Tel. +45 72 20 20 00

Contact persons

M.Sc. Søren Østergaard Jensen
sdj@teknologisk.dk
Tel. +45 7220 2488

6.1. General presentation

The OPSYS test rig emulates a house with an underfloor heating system to which a ground source heat pump can be connected. Figure 27 shows a principle sketch of the system. The system has two main elements denominated the hot side and the cold side as seen from the point of view of the heat pump (cold side = evaporator side, hot side = condenser side).

The hot side emulates the underfloor heating system (can also emulate a radiator system) with the possibility of using a buffer tank. The underfloor heating system is emulated via a series of parallel-connected heat exchanges resembling each room in the house. Hot water draw off may also be emulated, but this is currently not part of the test setup.

The heat consumption is programmable in order to simulate different sized rooms of a house with different load conditions. The controller of the experimental setup is running a simulation program, which calculates the heat consumption of the rooms and provides an emulated room temperature as well as an emulated return temperature of the water from each “room” as input to the control of the manifold. On the one hand, this makes it possible to emulate the today typical control of an underfloor heating system in an ordinary home while on the other hand, other more advanced control strategies may also be tested. The sizes and functions of the “rooms” can easily be changed in the simulation program by changing the load pattern and the heat loss of the “rooms”.

The cold side of the experimental setup (see Figure 27) emulates a heat source, e.g. the ground. This is an electric heater, which is controlled in order to obtain a brine temperature defined by the simulation program. With this method, seasonal variations of the ground temperature and different lengths of tubes in the earth can be emulated as well.

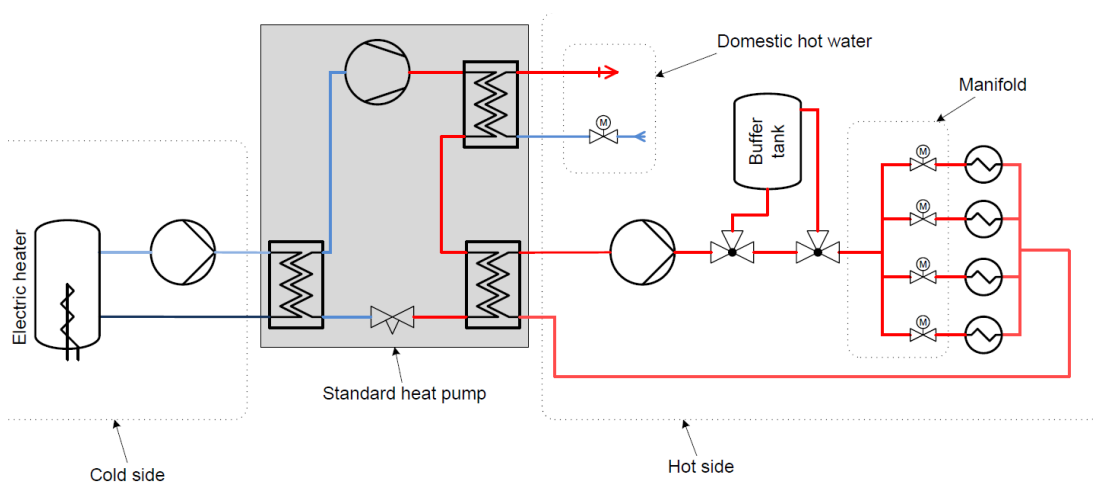


Figure 27. Principle sketch of experimental setup.

6.2. Description of the test facility

6.2.1. General principle and testing possibilities

General testing principles

The general concept of the semi-virtual test rig is presented in Figure 28. An actual device (heat pump or control of the thermostats in the heating system) is placed in the test rig, where it is studied under specific conditions which are simulated and implemented in the virtual environment. The overall principles are as follows:

- Test of the components under defined building and environmental conditions
- Development and integration of innovative control of heating systems.
- Analysis of equipment behavior at specific transitory phases for performance improvement.

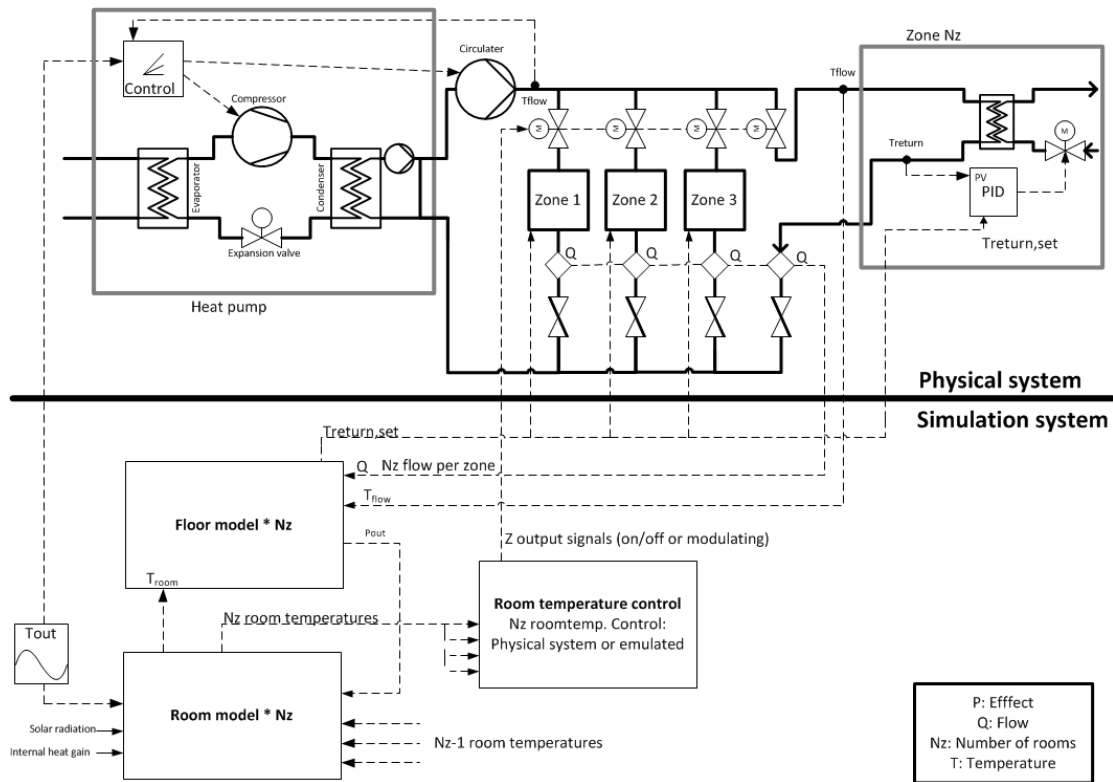


Figure 28. General concept of the semi-virtual OPSYS test rig.

Detailed testing principles

- Experimental testing of the control of the forward temperature of a heat pump.
- Experimental testing of the control of the water flow through a heat pump and through the different circuits of a heat emitting system.
- Demonstration of optimal combined control of a heat pump and the heat emitting system in a house.
- Demonstration of advanced control of a heat pump and the heat emitting system in a house with the purpose of optimizing the efficiency of the complete system and/or providing energy flexibility to the surrounding grid.

6.2.2. Available equipment and specifications

Heat emitting system

The heat emitting system consists of four heat exchangers, which emulate the heat demand of the house – see Figure 28 and 29. If necessary, more heat exchangers may be added to the test rig.

The virtual heat load on each heat exchanger is simulated by a house model, which is developed in Dymola (Modelica) and embedded in the control system of the test rig as an FMU

(Functional Mock-up Unit). The physical heat loads on the heat exchangers are created by the central cooling system at Danish Technological Institute, Energy and Climate Division. The flow rate of the cooling water is for each heat exchanger determined by the return temperature of the warm water leaving the underfloor heating, which is simulated by the house model

The hot water flows in the heat exchangers are controlled by traditional actuators for under-floor heating systems. The actuators consist of valves controlled by a wax motor – see Figure 29. When heating the wax with an electric current, the valves open. The valves close again when the current is turned off. The valves may either be on/off controlled or be kept partly open by pulsing the current through the wax motors. The position of the actuators is determined by the simulated room temperature and the implemented control algorithms for controlling the actuators.

The test rig is developed in a Danish project with the aim of increasing the Seasonal Performance Factor of heat pumps by optimization of the forward temperature from the heat pump and the flow rate through the heat pump (Jensen et al, 2018). However, as the control of the system is on the computer connected to the test rig, many different control options may be tested. One option is to control the heat pump according to the need of the surrounding power grid in the terms of providing energy flexibility. Traditionally energy flexibility of heat pumps has been tested by switching the heat pump on and off. However, increased energy flexibility may be achieved by pre-heating the building within the comfort limits of the room temperature before the heat pump is switched off due to a period with limited power in the grid. This demands for more advanced control including forecast of the future power level in the grid and the heat demand of the house. As the control of the test rig is implemented on the controlling computer, highly advanced control scenarios may be tested in the test rig and subsequently transferred to commercial control devices.

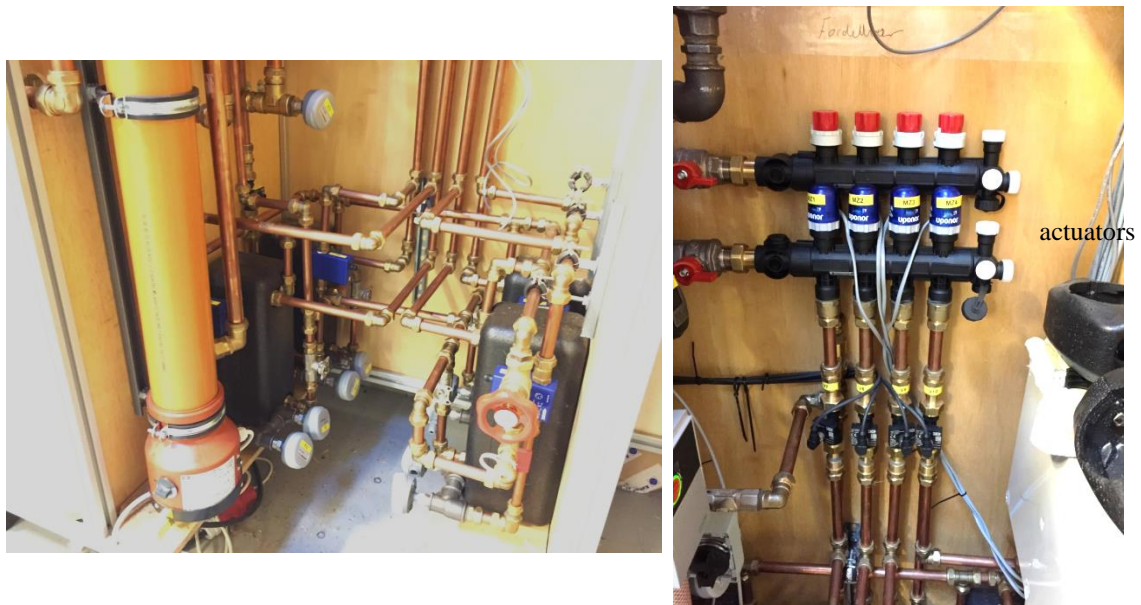


Figure 29. The heat exchangers emulating the heat emitters in a heating system (left). The actuators of the heating system (right).

- the heat exchangers are Reci PHE-TYPE: LP80Tx40 with a capacity of 8 kW
- the actuators are from Uponor. The running time from fully closed to fully open and vice versa is 300 seconds

Brine circuit

The brine circuit consists of a heating element in series with a 300 litre insulated buffer tank. The heating element is controlled in order to provide the heat pump with the desired brine temperature. The simulation program control the brine temperature so that it matches the time of the year run by the simulation program.

The buffer tank smoothens out any temperature variations of the brine temperature created by the control of the heating element, which has a capacity of 7 kW.

Originally the test rig is designed for testing of ground source heat pumps, which has been the most commonly used type of heat pump in Denmark. If an air to water heat pump needs to be tested in the test rig, the outdoor unit of the heat pump should to be located in one of the climate chambers at the Energy and Climate Division, DTI.

Heat pump

The first heat pump installed in the OPSYS test rig was a ground source heat pump from Bosch: Bosch Compress 7000 LWM 3-12 kW (Bosch, 2017). The heat production can be varied continuously between 3 kW and 12 kW. Below 3 kW on/off control is necessary.

The heat pump may be controlled by five inputs and five output in the control of the test rig. The simplest way to control the forward temperature of the heat pump is to manipulate the ambient temperature, which the heat pump “senses”. For the above-mentioned heat pump from Bosch the ambient sensor of the heat pump was replaced with a controllable voltage signal, which - when knowing the heating curve of the heat pump - may be adjusted to trick the heat pump to deliver the desired forward temperature.

6.2.3. Data acquisition and control

The test rig is controlled by a Python script running on a PC and a BMS system on the test rig. Figure 30 shows the connections between:

- the computer running the Dymola house model (as a FMU), the interface to the Trend BMS (CTS 963 software) and the control of a separate data logger (Agilent DAQ)
- the Trend controllers (BMS) via the sip
- the data (Agilent) logger

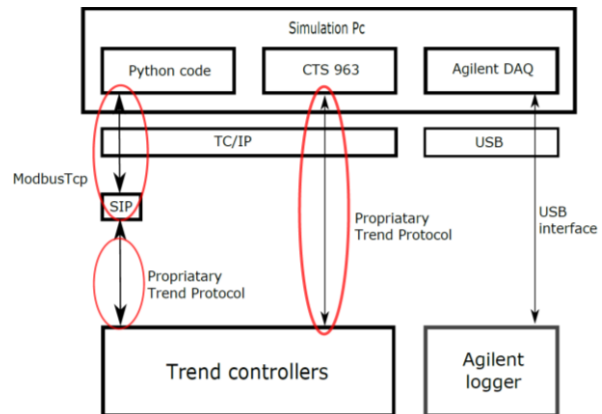


Figure 30. The connections between the test rig, the simulation computer and the data logger.

The BMS system of the test rig is composed of modules from Trend: one IQ4E and four 8UIO modules. The BMS is developed and interfaced by the Trend 963 software. Trend 963 is a Windows based software package, which provides a management interface between the user and the Trend IQ building control system.

The Trend BMS modules communicate with the components of the test rig via a sip Mod-Bus/vIQ module. The sip is an interface between the BMS and the components of the test rig using the serial ModBus protocol.

The heart of the virtual part of the test rig is the FMU, which runs a simulation of the heat demand of a typical Danish house. Three typical Danish houses from three different time periods have been developed (Jensen et al, 2018):

- a house from the 1970's
- a house built according to the Danish Building Regulation 2010
- a house built according to the Danish Building Regulation 2015

The house models contain typical free gains from persons, appliances and solar radiation. The house models use typical Danish weather conditions and an annual profile for the temperature of the brine to a ground source heat pump.

The parameters and values of the house models may be changed to reflect other building types and weather conditions.

The house models simulate the heat demand of the rooms of the house and transfer the room temperatures and the return temperatures of the underfloor heating system of the rooms to the control script, which also runs on the computer.

Figure 31 shows a screenshot of the interface of the BMS, which shows the four heat emitting systems. The test rig can either be controlled by the Python control script, which runs on the computer or manually – the latter for e.g. performing step response tests.

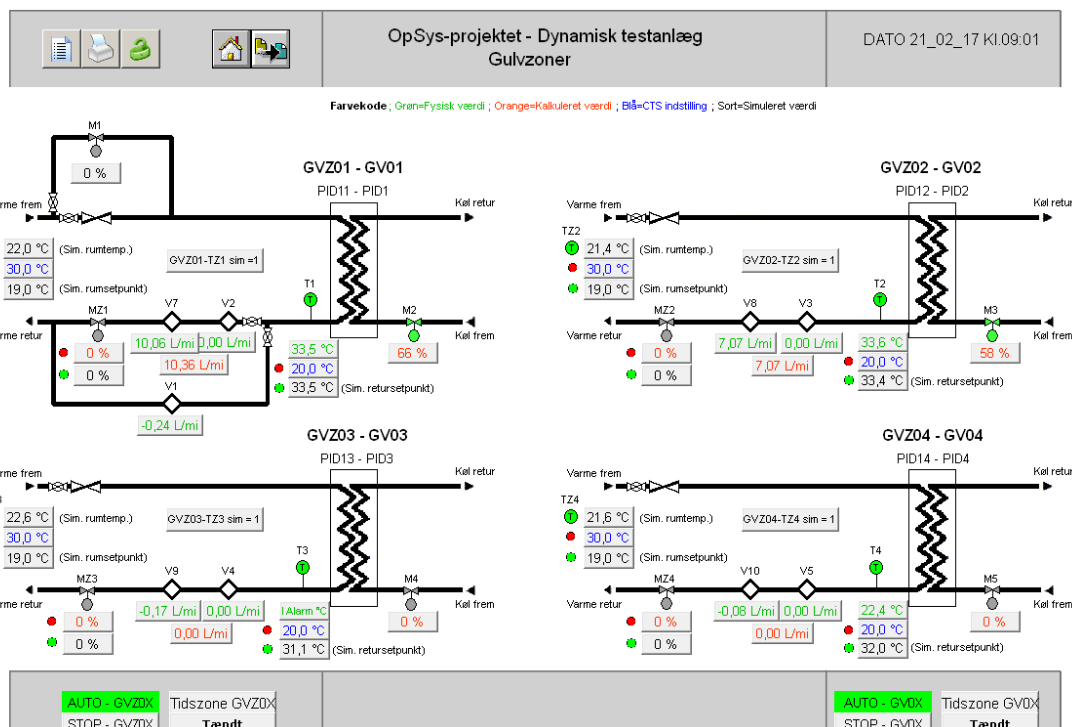


Figure 31. Screenshot of the BMS interface showing the heat emitting system.

The test rig is equipped with several physical and virtual sensors measuring temperature, flow, energy, and actuator positions – please refer to (Jensen et al, 2018) for a description of the applied sensors. The measurements are collected by the BMS, the data logger and the

house model and subsequently transferred to a database on the computer, which runs the test rig.

Special purpose Python scripts have been developed for extracting and aligning the measured data from the database.

6.3. Examples of previous studies

6.3.1. Study 1: Underfloor heating and heat pump optimization

The OPSYS test rig has been developed as a central part of the Danish research project: Underfloor heating and heat pump optimization (Jensen et al, 2018).

The purpose of the project was to minimize the gap between the accredited efficiency of domestic heat pumps and the actual efficiency when being installed in a house. Unfortunately, measurements on existing heat pump installations (Poulsen et al, 2017) have shown Seasonal Performance factors (SPF: mean annual efficiency) well below expectations as the heat pumps and the heat emitting systems are rarely properly adjusted at the installation of the heat pumps, and the operating parameters are not continuously adjusted according to the actual operating conditions. As an example, the supply temperature is often set too high in order to guarantee sufficient space heating. A supply temperature higher than needed results in a lower SPF. Typically, an increase of 1°C in the temperature difference between the cold side and the hot side of a heat pump leads to a decrease of 2-3% in the COP (instant efficiency of the heat pump).

Therefore, the aim of the OPSYS project was to develop and test optimized control strategies for making heat pump installations more efficient. To facilitate this, two tools have been developed: the OPSYS test rig and the OPSYS annual simulation tool.

The OPSYS test rig and the annual simulation tool were tested in terms of simulating traditional on/off control of the heating system. The two tools gave realistic and comparable results. Then, the two tools were tested with a more advanced control for obtaining energy flexibility to deliver services to the electrical grid as described in the following section. For this case as well, the two tools gave realistic and comparable results showing that they are capable of investigating more advanced controls.

Two more advanced controllers: a Model Predictive Controller (MPC) and an Artificial Neural Network (ANN) controller were investigated using the annual simulation tool. Savings of the electricity demand to the heat pump of up to 13 % were found for the investigated periods. These savings were obtained even when the overall COP of the system was as high as 3.9 with the traditional PI controller. Thus, the hypothesis of savings up to 25 % for a heat pump installation with traditional control and a SPF of around 3 (which is typical for Danish heat pump installations) seems realistic.

MPC and ANN controllers require more computational resources than traditional PI controllers, but certainly not prohibitively so. It is estimated that the supervisory controller, in either nonlinear MPC or ANN configuration, can easily be implemented and executed on e.g. a cheap Raspberry Pi with 0.5 GB RAM or similar industry-standard hardware. Furthermore, the supervisory control configuration makes it reasonably easy to interface with the heat pump and the underfloor heating subsystems.

The above results are very encouraging and lead to the conclusion, that MPCs and ANNs are promising candidates for optimized control of heat pump installations, where the performances of both the heat pump and the heat emitting system are optimized jointly. Therefore, the problems with poorly performing heat pump installations documented in (Poulsen et al, 2017)

may most likely be solved by switching from traditional PI control of the heat emitting system to advanced combined control.

6.3.2. Study 2: Energy flexibility via simple control of set points

A first study with a simple control to obtain energy flexibility with the purpose of supporting grid operation has been conducted both in the OPSYS test rig and with the OPSYS simulation tool. The results of the simulations and the test in the OPSYS test rig have been reported in Appendix G by (Jensen et al, 2018).

The focus of the study was a Danish single-family house from the 1970's with a preferred indoor temperature during the day of 22°C and a night setback to 19°C as shown in figure 32 (blue line). The aim of the tests was to study the obtainable energy flexibility if the set point for the room air temperature was decreased at the start of the cooking peak (red line after 17:00). The “cooking peak” (green box) is when people return home from work and start cooking and using other electrical appliances. This is the highest peak in the Danish power grid. To increase the obtainable flexibility, excess heating of the house before the cooking peak was also carried out by increasing the set point for the room air temperature (red line before 17:00). Different scenarios were investigated with the OPSYS simulation tool, where different decreases and increases of the set point (1 and 2 K) were investigated together with a variation of the length of the increase of the set point (one or two hours) before the cooking peak. One specific scenario was also carried out in the OPSYS test rig: the increase of the set point with 1 K one hour before the start of the cooking peak and a decrease of 1 K (2 K compared to the increased set point) at the start of the cooking peak. This scenario is illustrated by the red line in figure 32. A comparison between the simulation and the measurements showed remarkably good compliance.

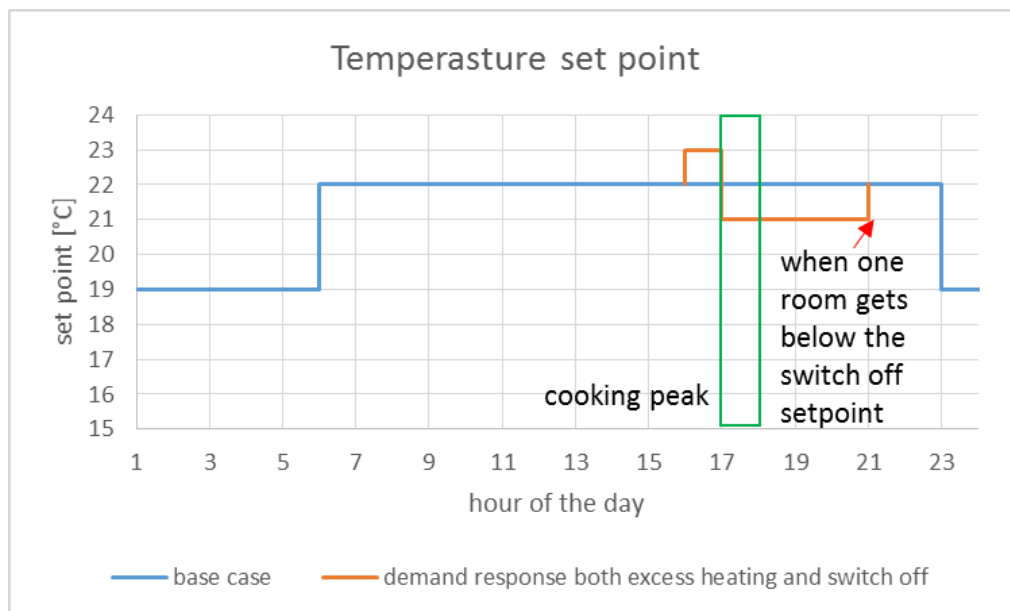


Figure 32. Variation of the set point for the room air temperature during the study.

For this specific house, the simulations showed that most energy flexibility was obtained by decreasing the set point of the room air temperature by 2 K at the start of the cooking peak. Excess heating prior to the cooking peak did not increase the obtainable energy flexibility significantly in this case. However, if the decrease of the set point at the start of the cooking

peak only was 1 K (e.g. due to comfort reasons) excess heating prior to the setback would increase the duration of the possible setback significantly.

Base on the simulated scenarios a method for comparing the obtainable energy flexibility over the year for different scenarios was developed – see Appendix G by (Jensen et al, 2018).

6.4. Maintenance and collaborations

The OPSYS test rig is run and managed by Refrigeration and Heat Pump Technology at the Danish Technological Institute. Refrigeration and Heat Pump Technology has laboratories in both Taastrup and Aarhus, Denmark. The OPSYS test rig is situated in Taastrup. Around 30 full-time employees are maintaining, organizing, and using the lab facilities in Taastrup and Aarhus.

Refrigeration and Heat Pump Technology performs:

- certified tests according to international standards on refrigeration and heat pumps systems
- research and development in the fields of not only refrigeration and heat pump technology, but also in the areas of solar energy, energy demand of buildings, and smart grids

6.5. Additional information

Danish Technological Institute offers lab testing services in the area of Eco design (Directive 2009/125/EC) and energy labelling (Directive 2010/31/EU) in the following categories; Commercial refrigerated cabinets, condensing units, domestic ovens and hobs, electronics for household, office and professional use, heat pumps, household refrigerating appliances, electric motors and drives, water pumps and circulators, fans, ventilation units - RVU/NRVU, and range hoods. Cross-product services include testing of sound and acoustics.

For further information: www.dti.dk/testing/ecodesign-and-energy-labelling/37224.

6.6. Relevant publications

Bosch, 2017. <http://dk.documents.bosch-climate.com/download/pdf/file/6720813696.pdf> .

Jensen et al, 2018. "Combined optimization of heat pumps and heat emitting systems". Danish Technological Institute and Aalborg University. May 2018. www.teknologisk.dk/39663

Poulsen et al, 2017. The good installation of heat pumps (in Danish). Danish Technological Institute and Insero. 2nd edition. January 2017. www.teknologisk.dk/39663

7. ZEB Living Laboratory - NTNU / SINTEF



Institution / Department

Norwegian University of Science and Technology,
NTNU
Department of Architecture and Technology

SINTEF Building and Infrastructure



Location of the test facility

NTNU Gløshaugen Campus,
Richard Birkelands vei 4
7034 Trondheim

Contact persons

Prof. Arild Gustavsen
Director of the Research Centre on
Zero Emission Buildings
arild.gustavsen@ntnu.no
Tel. +47 735 95 065

Dr. Terje Jacobsen
ZEB Centre User Liaison ter-je.jacobsen@ntnu.no
Tel. +47 416 64 331

7.1. General presentation

The ZEB Living Laboratory test facility is a single family house with a gross volume of approximately 500 m³ and a heated surface (floor area) of approximately 100 m². The building is realized with state-of-the-art technologies for energy conservation measurements and renewable energy source exploitation, and was designed to carry out experimental investigations at different levels, ranging from envelope to building equipment components, from ventilation strategies to action research on lifestyles and technologies, where interactions between users and low (zero) energy buildings are studied. The building is equipped with different, redundant energy systems and monitoring technologies, and is controlled by an on-purpose developed system, which allow different types of tests to be conducted, among them tests on energy flexibility in buildings.

7.2. Description of the test facility

7.2.1. Architecture and building technology

The Living Laboratory is a single family house with a gross volume of approximately 500 m³ and a heated surface (floor area) of approximately 100 m². It is realized with state-of-the-art technologies for energy conservation measurements and renewable energy source exploitation. The plan of the Living Lab (Figure 32) is organized in two main zones: a living area facing south and a working/sleeping area towards the north. The entrance is located in the southwest corner, and through a filter space, that hosts a wardrobe, the user gets access to the living room. The kitchen is located at the opposite end of the living room. An automated double skin (ventilated) window is installed in the living room, covering the largest part of the south facade. At the centre of the north zone, there is a shared studio area, equipped with a long writing desk and with an automated window.

Two bedrooms (one facing east and one facing west) are located at the two sides of the studio room. The technical room (accessible from outside the building), bathroom (accessible from the studio room) and the kitchen are placed all along the central spine of the building in order to optimize the distribution of the technical equipment. A small mezzanine is placed above the west bedroom, and it is equipped as sleeping area for guests or as play area for children.

The building construction has been optimized through a set of preliminary simulations, and resulted into a highly insulated envelope characterized by a glass ratio of around 20%. Walls, floors and roofs are made out of a conventional wooden-frame structure with a double layer of rock wool insulation for a total of 40, 40, and 45 cm respectively (and a U-value of 0.11, 0.10 and 0.11 W/m²K, respectively). All the windows are characterized by low u-value (in a range from 0.65 W/m²K – south window – up to 1.00 W/m²K – for the roof windows).

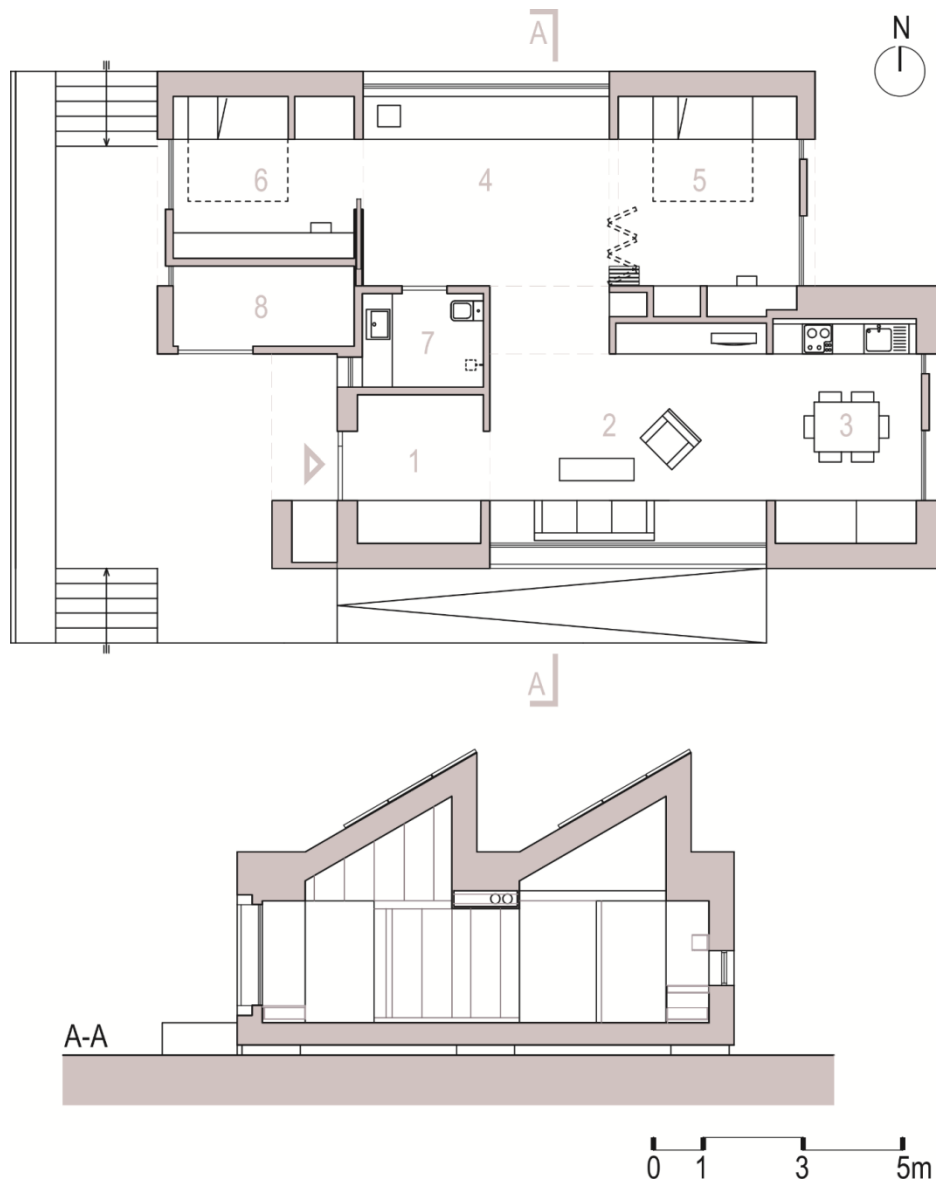


Figure 32. Plan and vertical section of the Living Laboratory (1: entrance; 2: living room; 3: kitchen; 4: studio room; 5,6: bedroom; 7: bathroom; 8: technical room). Original Figure in Goia et al. 2015.

7.2.2. Building equipment

The Living Lab is designed to minimize energy demand for its operation and to harvest solar energy to such an extent that converted solar energy (both through passive measures and active technologies) is larger, on a yearly basis, than the building energy demand, and even compensate embodied emissions in the constructions by avoiding greenhouse gasses emissions during the life of the building. The energy flow within the building plant, including on-site renewable energy supply, is schematically illustrated in Figure 33.

The thermal energy necessary to cover heating, ventilation and domestic hot water demands is primarily planned to be obtained by a fix speed scroll compressor ground source heat pump (GSHP in Figure 33), which is connected to a surface collector field (total length of the approximately 150 m) located in the back-yard (north of the building side) of the Living Laboratory. The heat pump has a nominal output of 3.2 kW (with B0W35) and a nominal COP of 3.7. In case of thermal output at a higher temperature level (55 °C), the nominal COP is 3.0 (B0W55) and the nominal thermal power is 2.6 kW. The heat pump has a very simple control

logic, which turns on the compressor full power when a heating (thermal output at 35 °C) or domestic hot water (thermal output at 55 °C) load is received by the controller, and turns it off when the load signal is over. Control of the signals for heating or domestic hot water load is achieved through the building level control system, integrated in the building monitoring and control system.

The plant-side of the heat pump is connected to an integrated tank (IWT in Figure 33) that combines a buffer tank (BT) for the heating circuit (160 l) and a domestic hot water tank of 240 l (DHTW). The lower, buffer tank, has with two coils: one connected to the thermal panel circuit, and the other connected to the domestic hot water circuit for preheating of the sanitary water. After flowing in the coil of the lower tank, the domestic hot water is stored in the upper tank, equipped with a coil connected to the heat pump output. Two auxiliary electric coils (3 kW each) are installed in the integrated water tank, one for each of the two vessels.

For research purpose, two different terminal units for the heating system are available in the building and planned to be operated independently: a floor heating system and one, 2kW high-temperature (55 °C) radiator. Underfloor heating panels are located under the entrance, the living room, the kitchen, the studio room, the bedrooms, and the bathroom. The sole radiator is instead installed in the living room, approximately at the centre of the building. It is also possible to use a combination of these two systems (e.g. the radiator can be used in combination with the floor heating in the bathroom).

Heating through ventilation air (ventilative heating) can be also exploited to cover heating demand in combination with fresh air supply need. In this case, underfloor heating in bathroom is expected to operate in combination with the overheated fresh air supply.

The building is equipped with a balanced mechanical ventilation plant with nominal air flow of 120 m³/h, and possibility to regulate the airflow up to 360 m³/h. Air diffusers are evenly distributed in the building (living room, studio room and two bedrooms), while extract takes place in the kitchen (to a small extent) and in the bathroom (to a larger extent). Fresh air supply is managed by a compact air handling unit that integrates a heat recovery system with rotatory wheel. The nominal efficiency (with a flow rate of 250 m³/h) of this system is 85%. The unit is equipped with an electric coil (1.2 kW) capable of heating up the supply air up to 40 °C (for ventilative heating purpose). A water coil (2 kW) is also available for post-heating of supply air and it is connected to the buffer tank. The unit can effectively control only the sensible temperature, while active control of relative humidity is not possible.

The air handling unit has an integrated controller that handles the equipment independently by the centralized control/monitoring system. The unit is however connected to the (upper) building level control system, which can therefore manage the unit. Hybrid ventilation strategies (combination of mechanical and natural ventilation) can also be exploited thanks to the possibility offered by some of the windows in the building, which are equipped with electric driver to allow automated opening.

The artificial lighting plant of the Living Laboratory is based on an extensive use of LED strips and LED luminaires. Conventional LED strips (12 V DC) with nominal power input of 4.8 W/m, 9.6 W/m and 14.4 W/m are installed according to locations and the required luminous flux.

Floor lamps and a pendant lamp above the dining table complete the lighting plant. All the luminaires are controlled by the building level control system and can be dimmed from 0 to 100% of the power through both both physical (pulse switches) and virtual (on touch screen) interfaces. The central building control system records the status of the physical and virtual signals and consequently acts on 24 fast-response solid state relays to manage the LED stripes

and lamps. Total installed power (including outdoor lighting) of the lighting plan is 1.2 kW (DC side). The AC to DC conversion is assured by a transformer with an efficiency of 87%.

Technologies for onsite renewable energy harvesting

Two façade-integrated solar thermal panels are installed on the south-facing façade of the building. They cover a total area of little more than 4 m², have optical efficiency of 0.82, and are connected to the buffer tank and to the GSUH-SCF circuit. A series of dedicated valves can change the direction of the flow of the heat carrier fluids in these circuits and different paths are therefore possible.

A total of 48 PV modules are installed on the two roof slopes of the building, 24 modules for each slope. Each PV module has a nominal power (values at STC) of 260 W, and the efficiency is just below 16%. The total installed power (DC) is thus approximately 12.5 kW_p for both the roofs. Each PV roof is connected to a power inverter with a nominal AC rated power output of 4.6 kW (single-phase, 230 V line), with an efficiency (European weighted efficiency) of 96.5%. An electric battery is not installed at the moment, it is planned to add a battery with a capacity of around 20 kWh.

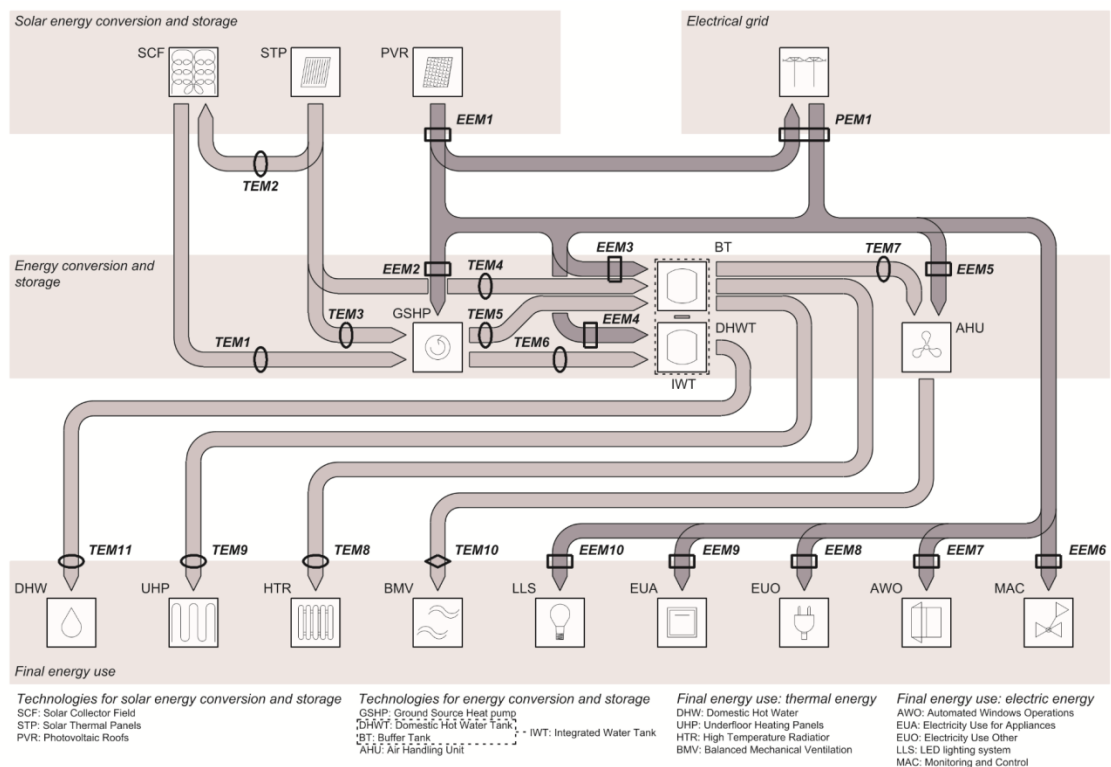


Figure 33. Thermal and electrical energy/power flow in the Living Laboratory; technologies and devices for energy conversion and storage and associated monitoring system. Original figure in Goia et al. 2015.

7.2.3. Monitoring and control systems

Aim and requisites of the monitoring system

The monitoring system in the Living Laboratory has been developed in order:

- to monitor the most relevant environmental quantities, both indoor and outdoor;
- to record users patterns and occupants' habits;
- to measure energy use for heating, ventilation, domestic hot water, artificial lighting, appliances and other uses;

- to quantify solar energy exploitation and energy from the grid; and
- to assess efficiency in conversion and storage of energy for different uses, as well as energy flexibility.

Starting from these aims, the requirements for the selection of the components of the monitoring system were set considering that:

- a compromise between accuracy, number and type of the sensors should be found – i.e. to reach the same measurement accuracy as in a laboratory test facility was out of the scope;
- sensors should be integrated in the building as it would be in a real house, and they should be chosen among those that can be installed in a conventional application;
- though, for research reasons, more sensors can be installed than in a conventional building, the number and location of the sensors should be as close as possible to that which would occur in a real, occupied building;
- the measurement system should be very flexible and allow a following upgrade to be easily realized;
- the characteristics of the sensors should be so that measurements and data analysis can be performed according to the relevant technical standards for energy and comfort assessment (e.g. EN 15251, IEC 62053).

Sensors and transducers

The building is equipped with a weather station that integrates sensors for measurements of outdoor air temperature (Pt 100; accuracy: ± 0.3 °C), relative humidity (thin film capacitive sensor; accuracy: $\pm 3\%$), barometric pressure (piezoresistive sensor, accuracy: 50 Pa), wind velocity (ultrasonic sensor, two axes; accuracy speed: $\pm 3\%$; accuracy direction: ± 2 deg), global solar irradiance on the horizontal plane (thermopile; accuracy: II class pyranometer). The weather station is installed above the roof of the building. A luxmeter is installed on the roof to record global (direct, diffuse, reflected) illuminance in the horizontal plane (thermopile; accuracy: $\pm 5\%$). Global solar irradiance measured in two other locations as well: on the roof slope plan and on the south façade, both by means of thermopiles (accuracy: II class pyranometer).

Outdoor air temperature is also recorded by means of two additional sensors located on the south- and north-exposed façade (Pt 100; accuracy: ± 0.1 °C). Both sensors are suitable protected from the influence of direct solar irradiation.

Indoor air temperature values are measured in every room of the Living Laboratory, at the height of 1.6 m from the floor. In the living room and in the studio room temperature stratification is also measured at 5 levels (0.1, 0.8, 1.6, 2.4, 3.2 m from the floor) by means of a wall mounted sensors with PT100 probe (accuracy: ± 0.1 °C). Relative humidity is recorded thanks to a wall mounted capacitive probe (accuracy: $\pm 3\%$) integrated in a multi-sensor element, in all the room of the building. The relative humidity sensor comes in combination with a temperature sensor (Si band-gap; accuracy: ± 0.8 °C) which is used as temperature signal for the controller.

Air temperature and relative humidity values are also measured near each diffuser of the ventilation plant (i.e. living room, kitchen, studio room and two bedrooms) through duct sensors that integrate a band-gap temperature sensing elements (accuracy: ± 0.8 °C) and a capacitance probe for relative humidity measurement (accuracy: $\pm 3\%$).

CO₂ concentration values are recorded by means of a non-dispersive infrared sensor (accuracy: ± 70 ppm + 5% MV), one sensor in each room, located close to the correspondent temperature sensor.

A combined ceiling mounted sensor measures in each room diffuse illuminance level and people presence. The sensor contains a probe for light intensity (digital sensor for illuminance; accuracy: $\pm 5\%$) and a sensing element for motion detection (infrared sensor). Users' behaviour is also monitored by recording position (open/closed) of all the windows (both automated windows and manually-operated windows) by means of a simple magnetic contact sensor, as well as artificial light use down to every single LED luminaire.

Thermal energy demand for heating purpose is measured for two independent terminal configurations (high temperature radiator, TEM8 in Figure 33, and low temperature underfloor heating panel, TEM9 in Figure 33). For both the circuits, a thermal energy meter calculator is used in combination with PT500 temperature probes and ultrasonic flow meters, resulting in an accuracy of 2%. Monitoring of energy demand when underfloor heating panels are in use is split in three different zones: living room, kitchen and studio; bedrooms; and bathroom. Energy demand for domestic hot water (TEM11 in Figure 33) and waterborne energy demand for ventilation (when the water coil is activated, TEM7 in Figure 33) are also monitored by means of similar configuration. Sensors used to monitor thermal energy use are different from those used to control the plant.

Airborne thermal energy demand for ventilation (TEM10 in Figure 33) is calculated from measurement of air speed, of temperature and of relative humidity in ventilation ducts. For this purpose, two sensors that integrates a PT100 probe (accuracy: ± 0.3 °C) and a capacitive probe (accuracy: $\pm 3\%$) are installed, one in the supply main duct and one in the extract main duct. Air speed is measured by means of one hot-wire sensor (range: 0.1...30 m/s; accuracy: 10%) in each of the two main ducts.

Electric energy use for heating ventilation and domestic hot water is monitored by means of several electric energy meter located on the (single-phase) lines that powers different building equipment components, all having a resolution of 1 Wh and an accuracy of 2%.

Electrical energy use in the building that is not related to heating, ventilation and domestic hot water can be grouped in five categories: energy use for lighting (EEM10 in Figure 33), for appliances (EEM9), general electricity for other uses (EEM8), energy use for use and control of automated windows and shading systems (EEM7) and energy use for monitoring and control of the building (EEM6).

The electric energy monitoring system measures 25 power lines independently monitored (single-phase energy meter with 1 Wh resolution and 2% accuracy), and allows a high level of detail to be achieved, being able to discriminate electrical energy use a single appliance (i.e. fridge; hob; oven; extraction hood; dishwasher; washing machine; tumble dryer), for groups of sockets (i.e. sockets in living room and entrance; sockets in kitchen; sockets in studio room; sockets in bedrooms and sockets in bathroom), for line to power shading devices, for line to power automated windows and their controllers. The power line for lighting is independently monitored and, as previously mentioned, through data post-processing based on control signals counters it is possible to assess lighting energy use down to luminaire level.

Energy for auxiliaries is also monitored so that components are coherently grouped. Several power lines related to electric coils or to the heat pump, as well as auxiliary lines for power in the technical room and for the DAQ are monitored too.

Power converted by means of PV roofs is monitored both by means of two energy meters (EEM1; resolution: 1 Wh; accuracy: 2%.), one for each PV roof, and by means of data retrieved from the inverters. Among others, data retrieved from power inverter include: operat-

ing hours; DC current input and voltage; DC power input; AC voltage and current output; AC active, reactive and apparent power.

Three-phase electrical energy/power supply from the grid is monitored by means of a power meter (63rd harmonic, 128 samples per cycle), which records, for each phase, current (accuracy: $\pm 0.5\%$), voltage (accuracy: $\pm 0.2\%$), power factor (accuracy: ± 0.002), active power (accuracy: $\pm 0.2\%$), frequency (accuracy: ± 0.01 Hz), active and reactive energy (accuracy: IEC 62053-23 Class 2 and IEC 62053-23 Class 0.5, respectively). The meter is designated with the code PEM1 in Figure 33.

Thermal energy/power output from the solar thermal panels is calculated starting from measurement of heat carrier fluid (water-glycol) flow rate (electromagnetic flow meter; accuracy: $\pm 5\%$) and temperature (of flow and return), the latter one by means of PT100 probes (accuracy: ± 0.1 °C). Due to flexible use of solar thermal converted energy, this thermal output can be diverted to the surface collector field (TEM2 in Figure 33) for ground regeneration, or to the heat pump (TEM3) or to the buffer tank (TEM4).

Similarly to the solar thermal panel circuit, thermal energy/power extracted from the surface collector field (TEM1 in Figure 33) is calculated starting from monitoring of flow rate and temperature of flow and return. Flow rate is measured by means of an electromagnetic flow meter (accuracy: $\pm 5\%$) and temperatures with PT100 probes (accuracy: ± 0.1 °C).

Additional temperature and humidity measurements are also performed in several other locations of the plant for different purposes (e.g. control, energy conservation equation, in-depth analysis of components). In general, temperature measurements in water or water-glycol heat carrier fluids are carried out by means of PT100 class I probes, while J/T type thermocouples (accuracy: ± 0.5 °C) are used to perform additional temperature measurements in air or on surfaces. Relative humidity measurements are done through capacitive sensors with accuracy $\pm 3\%$.

Data acquisition and control system

Acquisition of signals from sensors and transducers is carried out by a National Instrument system based on the CompactRIO platform. This is a modular structure, where controllers, expansion chassis, input/output modules can be freely combined in order to suit the requirement of the measurement layout. One of the main advantages of this system is that future expansion and modifications of the measurement system can be realized in a relatively easy way.

The chosen starting configuration for the Living Laboratory includes one controller and two expansion chassis. A total of 19 different input/output signal modules are installed, ranging from current to voltage signals, from resistance to digital signals. Modbus communication protocol is widely used to connect transducers and components with serial communication features.

Signals sourcing for building equipment control are generated by data acquisition hardware. Most common control signals are 0...10 V, digital signals (24 V logic) and Modbus serial communication.

The integrated data acquisition system and control system is controlled by means of the National Instrument LabVIEW programming code. This is a graphical programming environment specifically developed for sophisticated measurement and tests. User interfaces will be developed to allow users controlling (some) of the features of the building. One of the main advantages of this system is that the degree of control that is handed out to the users can be relatively easily changed from one experiment to the other. Dedicated user interface will be developed for each experiment in order to allow occupants to control only some of the fea-

tures of the building. A more comprehensive user interface handling the whole building components is developed and is used by researchers to control the building when not occupied. It is worth mentioning that, due to its configuration and particular features, such as centralized management of the entire building equipment, including control of power lines, actuators, artificial lighting, windows and shading system, the building can be completely operated without users living in it, using schedules so that ideal occupancy can be also experimented.

7.3. Example of previous studies

7.3.1. Study 1: Making a home in Living Lab: the limitations and potentials associated with living in a research laboratory.

The first qualitative experiment in Living Laboratory (Woods et al., 2016) took place from September 2015 to April 2016, when six different resident groups comprising of two to four people, lived in the Living Laboratory as if it were their home for a period twenty-five days each. The resident groups were chosen because they are associated with three basic demographic categories; students under 30 who are already cohabiting, families with small children and couples around the age of sixty. During the resident periods, the Living laboratory functioned as a home outside their actual homes for each of the six groups. The insight gathered in Living Laboratory provided an understanding of how a concept of home is established within a highly technical setting, and the implications this has for the use of the technology being tested in Living Laboratory.

7.3.2. Study 2: Daylighting availability in a living laboratory single family house and implication on electric lighting energy demand

The aim of this study (Lobaccaro et al. 2017) was to analyse the correlation between natural light availability and use of artificial light in a residential building located in the Nordic climate. Experimental data and numerical simulations were used to compare the use of artificial light (and the correlated electric energy demand) against the daylighting availability, in Living Laboratory, considering the six groups of resident involved in the experiment previously described. During the building occupation by the 6 different groups of people, electrical energy use for artificial lighting was continuously recorded, together with outdoor environment conditions (irradiance and illuminance on the horizontal plan). Through advanced daylighting simulations carried out with DIVA-for-Rhino, the availability of daylight (illuminance level) during the periods of occupancy has been reconstructed, using as input data the outdoor environmental variable recorded during the experimental analysis. The results, based on the analysis of the outcomes of five groups, show that the coefficient of correlation between daylight availability and energy saving (measured thorough the artificial light energy demand) is low, and it appears that the use of artificial lighting is little dependent on the availability of natural light.

7.3.3. Study 3: Energy performance assessment of a semi-integrated PV system in a zero emission building through periodic linear regression method

The aim of this study (Goia and Gustavsen, 2017) was to assess the performance of the photovoltaic (PV) system installed on the Living Laboratory. The building has a semi-integrated PV plant installed over two slopes of the building's roofs. The total installed power (DC) is

approximately 12.5 kWp. Each PV roof is connected to a power inverter with a nominal AC rated power output of 4.6 kW, based on a layout that optimize energy conversion, given the fact that shading over the two roof slopes is different.

In this paper, the performance analysis of the PV system is carried out considering the six months in the first year of operation of the system. A graphical analysis based on the linear regression method is presented and the array yield is compared against the reference yield (Performance Ratio). The analysis gives a general overview of the performance of the system, and a focus is then placed on the understanding of the system's output in relation to the undersizing of the PV inverters.

7.4. Maintenance and collaborations

The ZEB Living Laboratory is run and managed jointly by the Norwegian University of science and Technology, NTNU, and SINTEF Building and Infrastructure, and it is part of the ZEB Laboratories system, which includes also the ZEB Test cell Laboratory, and the ZEB Advanced Materials and Component Laboratories.

The ZEB Laboratories system is involved in numerous projects with different partners:

- Direct contracts for equipment testing, development of technical solutions, improvement of systems, etc.
- Partnership for national / international R&D projects
- Shared developments for new products

7.5. Additional information

Multimedia

The ZEB Laboratories system can be found here:

<http://www.zeb.no/index.php/en/laboratories>

7.6. Relevant publications

- F. Goia, L. Finocchiaro and A. Gustavsen. 2015. The ZEB Living Laboratory at the Norwegian University of Science and Technology: a zero emission house for engineering and social science experiments. Proceedings of 7PHN Sustainable Cities and Buildings. 21-21 Aug 2015, Copenhagen (Denmark).
- F. Goia and A. Gustavsen. 2017. Energy performance assessment of a semi-integrated PV system in a zero emission building through the periodic linear regression method. Proceedings of NSB 2017 – The 11th Nordic Symposium on Building Physics. 11-14 June 2017, Trondheim (Norway).
- G. Lobaccaro, S. Esposito, F. Goia and M. Perino. 2017. Daylighting availability in a living laboratory single family house and implication on electric lighting energy demand. Proceedings of CISBAT 2017 - International conference on Future Buildings & Districts – Energy Efficiency From Nano to Urban Scale. 6-7 Sep. 2017, Lausanne (Switzerland).
- R. Woods, T. Berker and M. Korsnes. 2016. Making a home in Living Lab: the limitations and potentials associated with living in a research laboratory. Proceedings of the Demand Centre Conference 2016.

8. Semi-virtual Laboratory – Polytechnique Montréal



Institution / Department

Polytechnique Montréal
Department of Mechanical Engineering
Building Energy Efficiency (BEE) Research Group

Location of the test facility

Campus de l'Université de Montréal
2900, boul. Édouard-Montpetit
2500, chemin de Polytechnique
Montréal QC H3T 1J4
Canada

Contact

Michaël Kummert
michael.kummert@polymtl.ca
Tel. +1 514 340 4711

POLYTECHNIQUE
MONTREAL



8.1. General presentations

The Semi-Virtual Laboratory at Polytechnique Montréal allows to test hydronic (water-side) heating and cooling equipment in highly dynamic conditions. Active (e.g. heat pumps) and passive (e.g. storage tanks) equipment can be tested thanks to auxiliary loops capable of producing and rejecting up to 100 kW of heat simultaneously. A key feature of the Semi-Virtual Lab is to perform Hardware-In-the-Loop testing, where HVAC equipment is tested in realistic operating conditions provided by a full system dynamic simulation with the TRNSYS program. The 2-way data exchange between LabVIEW and TRNSYS is performed at every time step through shared variables, allowing direct feedback from the experimental performance on the simulation results and vice-versa.

The objective of the Semi-Virtual Lab is to develop and validate detailed dynamic models of HVAC equipment including detailed controls, and to test new prototypes or existing equipment in realistic dynamic conditions to improve their design and standard testing methods.

8.2. Description of the test facility

The concept of semi-virtual testing for a water-to-water heat pump is represented in Figure 34.

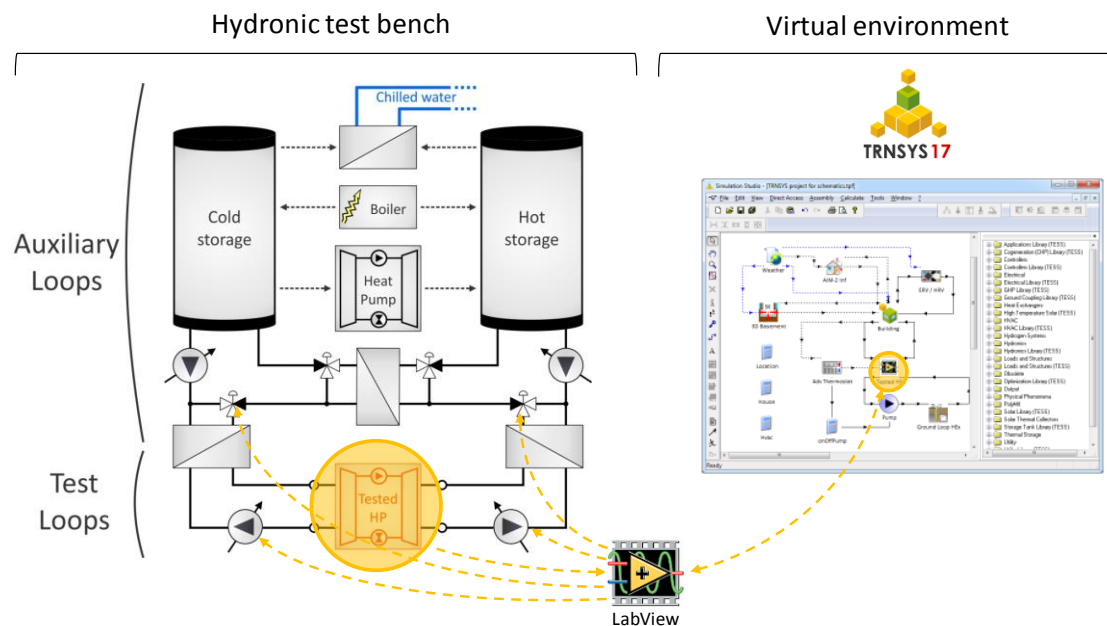


Figure 34. Semi-virtual testing at Polytechnique Montréal.

TRNSYS simulations predict system performance, calculating the flowrates and temperatures of the fluid streams entering HVAC equipment under test, which are used as actuator control signals in the Laboratory. The equipment's response to these operating conditions is sensed in the laboratory and imposed back on the building simulation.

Dynamic operating conditions are imposed on the tested equipment (e.g. a heat pump, as in the figure) based on a full system simulation. Measured outlet conditions (in this case temperature and flowrate on the source and load sides) at a given time step are sent to the simulation, which then calculates the inlet conditions for the next time step.

Testing possibilities

The flexibility of the Semi-Virtual Laboratory allows to perform different types of experimental tests:

- Standard tests imposing predefined (possibly highly dynamic) inlet conditions on HVAC equipment to assess its performance and to develop or validate numerical simulation models.
- Semi-Virtual tests where HVAC equipment is integrated within a full system simulation, therefore testing the equipment as if it was in a real system. This allows assessing the equipment performance in these conditions, and developing or validating models adapted to them.
- Semi-virtual tests also allow testing the response of the equipment's embedded controls to realistic operating conditions, therefore allowing to understand and model these controls realistically. This is especially important for recently introduced variable capacity devices (e.g. variable speed heat pumps, and Variable Refrigerant Flow devices) which often include proprietary and undocumented control strategies for which developing accurate models is a challenging task.
- Detailed testing and performance assessment for prototypes, in order to develop them and improve their performance for realistic operating conditions in addition to predefined standard tests.
- Assessment of the difference between the seasonal or yearly performance extrapolated from standard steady-state tests and the seasonal or yearly performance obtained from models validated in highly dynamic, realistic operating conditions. These studies can also inform standard certification bodies and help them develop new, more accurate standards methods of testing.

8.2.1. Equipment specifications

The 4 hydronic loops of the laboratory are shown in Figure 35. Two auxiliary loops (blue and red) can produce water at temperatures between $-10\text{ }^{\circ}\text{C}$ (with glycol solution) and $+85\text{ }^{\circ}\text{C}$. Although the two loops are both connected to the heat production and heat rejection devices, for the sake of this explanation the blue loop will be considered as the cold loop and the red loop will be considered as the warm loop. These auxiliary loops are hydraulically isolated from the test loops (yellow and green) by plate heat exchangers equipped with 3-way valves. These heat exchangers and their control valves are used to impose the desired inlet conditions (optionally calculated from the full system TRNSYS simulation) on the tested equipment.

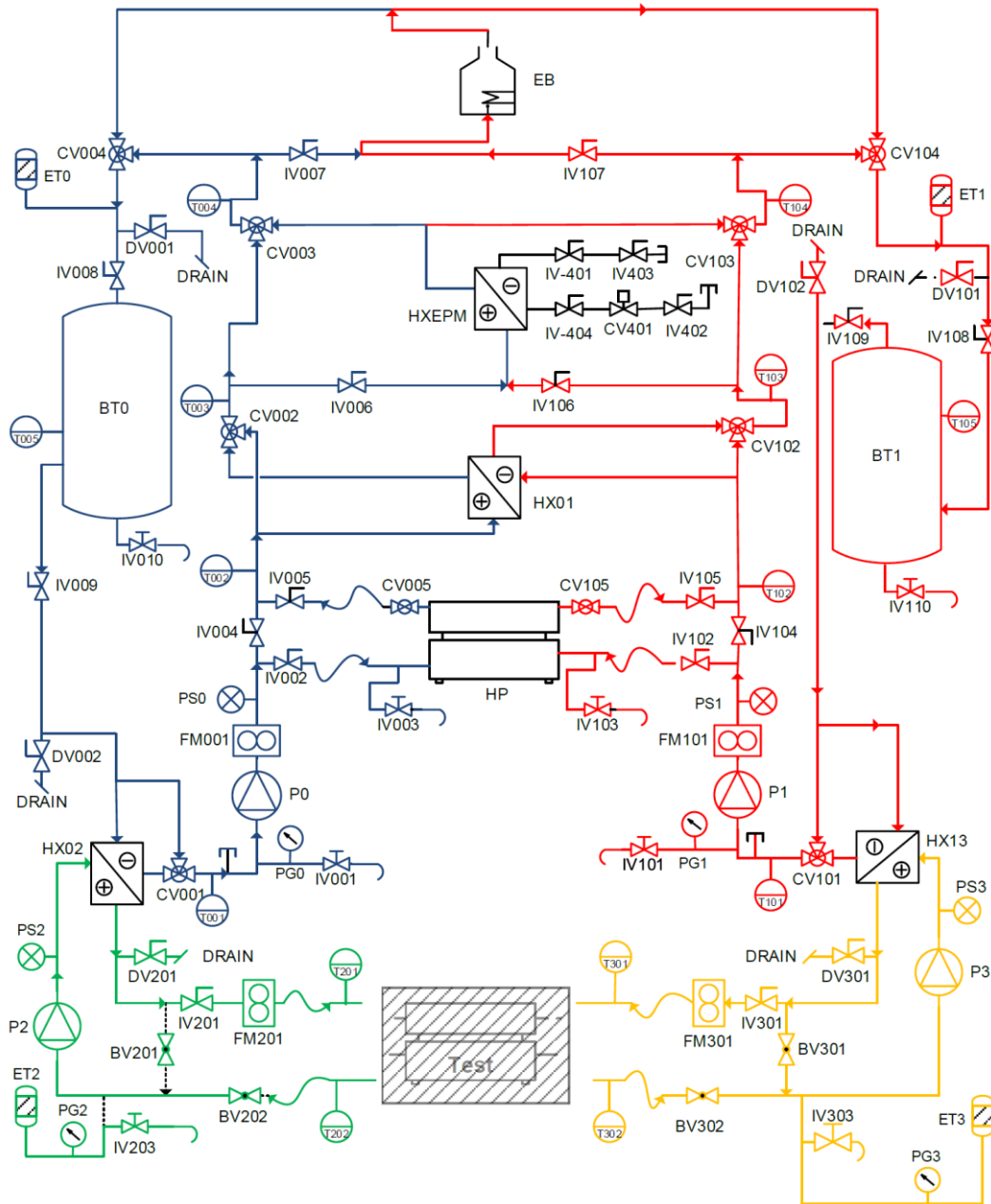


Figure 35. Hydronic loops of the Semi-Virtual Laboratory.

The hydronic loops piping has a diameter of 2.5" (62.5 mm) to allow relatively large flowrates, and adapters (with specific flowmeters) are available to reduce the test loops to a diameter better suited to smaller equipment (e.g. residential heat pumps). Operating temperature limits are between -10 °C and +85 °C depending on the fluid (up to 30 % glycol) and the equipment used.

The nomenclature in Figure 35 uses the first digit to represent the hydronic loop: "0" and "1" to denote the auxiliary loops, "2" and "3" to denote the testing loops. CV001 for example would be the first control valve ("01") in the "cold" auxiliary loop ("0").

The main components are described below:

- CVnnn: 3-way valves, centrally controlled. CV103 is a special constant-pressure control valve located in the university chilled water network, allowing to obtain a constant flowrate independently of the chilled water loop operation.

- EB: electric boiler (54 kW thermal, compatible with up to 30 % glycol)
- HxEPM: heat exchanger with the university (École Polytechnique de Montréal) chilled water network. The heat exchanger capacity is sized to reject 100 kW with a ΔT of 7 °C
- BT0 and BT1: storage tanks (974 L each)
- Hx01: heat exchanger between the two auxiliary loops (“0” and “1”). Standard tests imposing predefined (but possibly highly dynamic) inlet conditions on HVAC equipment to assess its performance and to develop or validate numerical simulation models. It is sized to exchange 100 kW with a ΔT of 4.5 °C.
- HP: variable capacity water-to-water heat pump (can be used as part of the auxiliary loops, or as the tested equipment). Operating limits: -10 °C on the evaporator side (with glycol), 55 °C on the condenser side (note that when bypassing the heat pump, the electric boiler can heat the auxiliary loops up to 85 °C).
- P0 and P1: Variable speed pumps for the auxiliary loops. The design maximum flowrate in the loops is 4.7 L/s (75 GPM). The actual maximum flowrate depends on operating conditions because of pressure limits (e.g. with the “HP” heat pump in service, the maximum flowrate is about 3.8 L/s (60 GPM)).
- Hx02 and Hx13: heat exchangers between the auxiliary loops and the test loops. These exchangers are designed to transfer 100 kW with a ΔT of 3 °C.
- P2 and P3: Variable speed pumps for the test loops. The design maximum flowrate in the loops (depending on the configuration because of minimum and maximum pressure limits) is 4.7 L/s (75 GPM).

8.2.2. Sensors, data acquisition and control

The laboratory is equipped with high accuracy temperature sensors and flowmeters, as well as power transducers:

- Pt 100 with 1/10 DIN accuracy in the test loop and Pt100 with 1/3 DIN accuracy in the auxiliary loops. In addition, various thermopiles can be fitted to the test loops to measure temperature difference with a very high accuracy.
- Flowmeters with traceable calibration reports with an accuracy better than 1 % of reading in their full operating range. Standard range is 1 L/s to 11 L/s (15 to 180 GPM), optional smaller flowmeters for test loops have a range of 0.06 L/s to 0.6 L/s (1 to 10 GPM).
- Power transducers with an accuracy (for voltage, current and power) better than 0.5 % of full scale are available in 1-phase and 3-phase, for 120 V to 600 V and rated current between 5 A and 100 A. These transducers output voltage, current, VA, RMS power and power factor.

Data acquisition and control are performed by a modular high accuracy National Instrument CompactRIO system programmed in LabVIEW. As described above, the LabVIEW program can optionally communicate with TRNSYS for semi-virtual testing. Figure 36 shows a screenshot of the LabVIEW interface. In semi-virtual mode, T201_set, T301_set, FM201_set, and FM301_set come from the TRNSYS simulation through shared variables in LabVIEW.

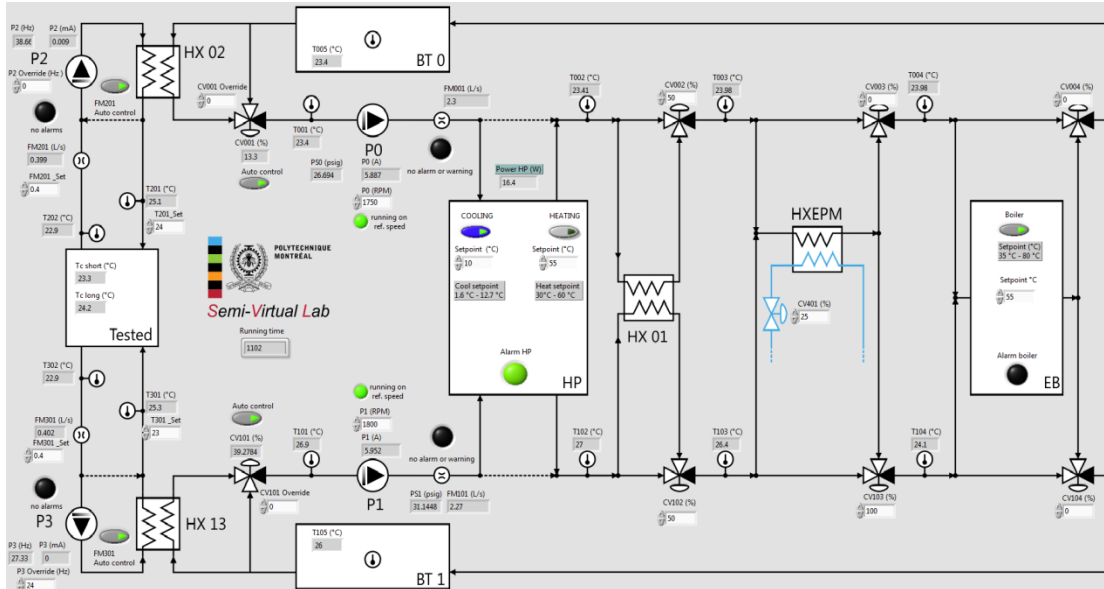


Figure 36. Screenshot of the Labview interface.

8.3. Examples of previous studies

8.3.1. Study 1: Development of a LabVIEW-TRNSYS bidirectional connection

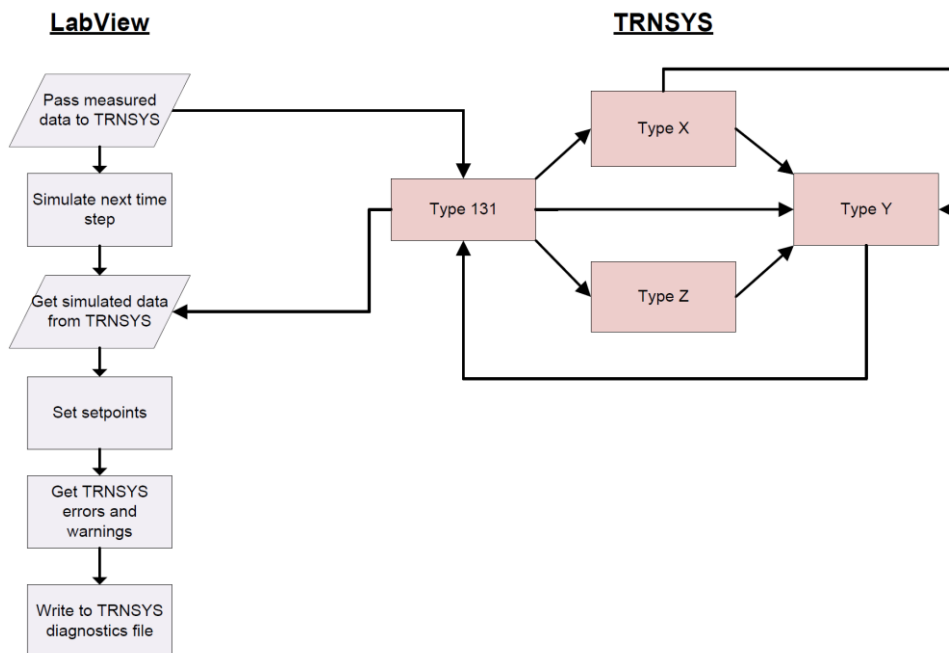


Figure 37. Principle of the LabVIEW interaction with TRNSYS.

In this project (Macdonald et al., 2014), a novel communication methodology was developed to allow rapid data exchange between the Data Acquisition software LabVIEW and the energy simulation program TRNSYS. The developed method uses data exchange through shared variables between the TRNSYS DLL and the LabVIEW executable, and does not require writing or reading data files. A procedure to properly initialize the simulation and the laboratory equipment was also developed and implemented. Changes to the TRNSYS code source are encapsulated in a newly developed component, named Type 131. The principle of the communication between the two programs is described in Figure 37.

8.3.2. Study 2: Experimental Study of a Phase-Change Material storage tank

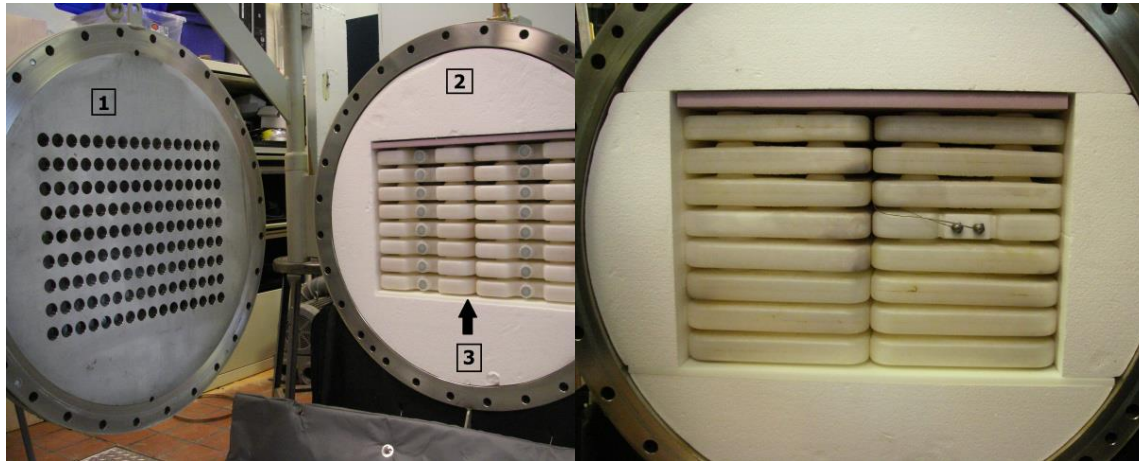


Figure 38. PCM tank viewed from the inlet, including 1) perforated plate, 2) capsule support and 3) PCM capsules.

Figure 39. Position of the instrumented PCM capsule in the tank as viewed from the outlet.

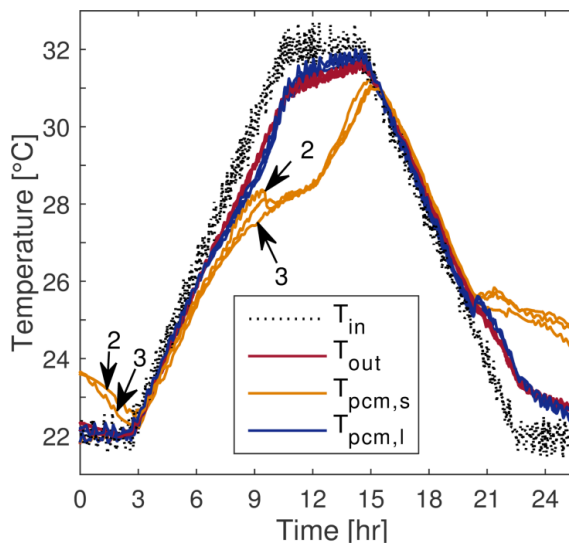


Figure 40. Example of results for a test with a fixed temperature change rate at the inlet of the tank.

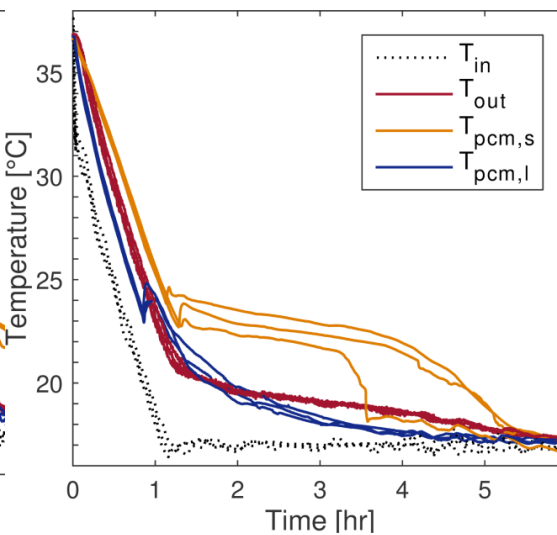


Figure 41. Example of results for a cooling step test.

This project aimed at designing a storage tank with Phase-Change Materials (PCM) and to test it in realistic operating conditions (D'Avignon and Kummert, 2013; D'Avignon and Kummert, 2016). The first objective was to integrate the newly designed PCM tank into the lab and adapt the data acquisition environment to allow its detailed monitoring. A first series of tests was performed using predefined procedures, therefore without using the communica-

tion with TRNSYS. But the dynamic capabilities of the Semi-Virtual Laboratory were used to impose changing conditions to the tank and fully validate its detailed model.

Figure 38 to Figure 41 show the PCM tanks and some examples of results (T_{in} and T_{out} are the inlet and outlet temperatures of the tank, $T_{pcm,l}$ and $T_{pcm,s}$ are the PCM mass temperature at 2 different locations).

In a second step, the PCM tank was tested in a semi-virtual environment. A TRNSYS simulation model was developed to represent a building with its heating system, and the PCM tank was used to reduce the building peak demand and operating costs by shifting demand from on-peak to off-peak periods.

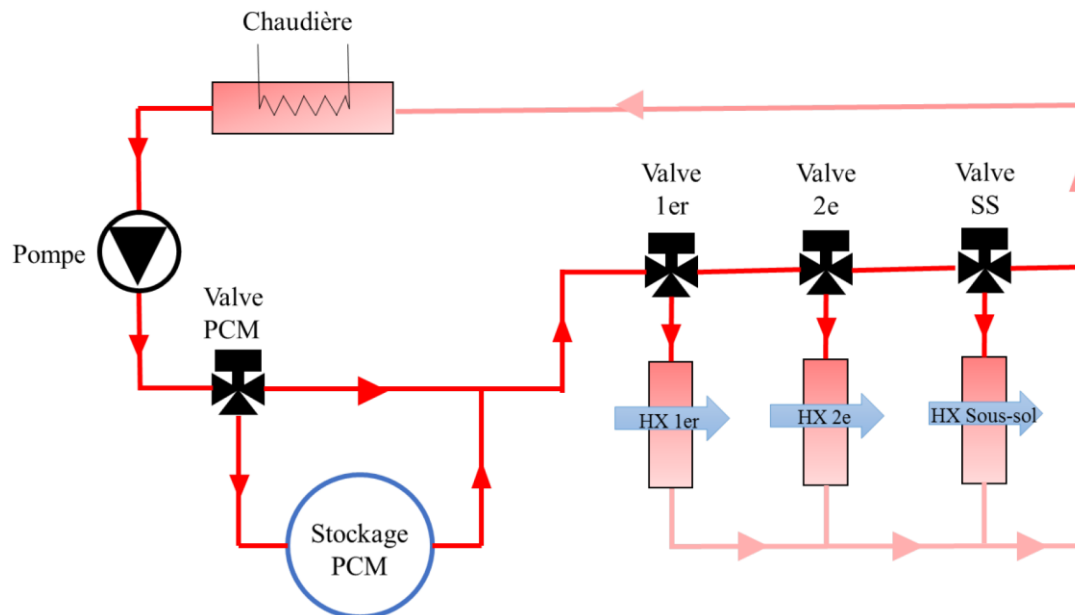


Figure 42. PCM tank in a hydronic heating loop for semi-virtual testing.

More details on the study are available in D'avignon (2015) and Lessard (2016). The Semi-Virtual environment allowed to further validate the developed model component in TRNSYS and demonstrate the usefulness of the laboratory to assess the storage tank behaviour in realistic operating conditions.

8.4. Maintenance and collaborations

The Semi-Virtual Laboratory at Polytechnique Montréal was funded through a partnership with the Canada Foundation for Innovation (CFI), and is now run by the graduate students and staff at Polytechnique Montréal. The CFI also provides a maintenance budget that can help adapting the laboratory to the different requirements of new research projects. The PCM tank is currently being replaced by water-to-water heat pumps (commercially available models and in-house developed prototypes). Projects can be performed in partnership with other research institutions, manufacturers, utilities, or government agencies interested in developing standard testing procedures.

8.5. Additional information

Research team website:

<http://www.polymtl.ca>

8.6. Relevant publications

- K. D'Avignon and M. Kummert. 2013. 'Comparison of system-level simulation and detailed models for storage tanks with phase change materials', in Proceedings of Building Simulation 2013:13th Conference of International Building Performance Simulation Association, Chambéry, FRA, August 26-28, pp. 2940–2948.
- K. D'Avignon and M. Kummert. 2016. 'Experimental assessment of a phase change material storage tank', Applied Thermal Engineering, 99, pp. 880–891. doi: 10.1016/j.applthermaleng.2016.01.083.
- K. D'Avignon. 2015. 'Modeling and experimental validation of the performance of phase change material storage tanks in buildings'. PhD thesis, Montréal, QC, CAN: Polytechnique Montréal, Dept. of Mechanical Engineering.
- D. Lessard. 2016. 'Essais du Laboratoire Semi-Virtuel d'Équipements CVAC'. MEng thesis, Montréal, QC, CAN: Polytechnique Montréal, Dept. of Mechanical Engineering.
- F. Macdonald, K. D'Avignon, M. Kummert and A. Daoud. 2014. 'A TRNSYS-LabVIEW bi-directional connection for HVAC equipment testing using hardware-in-the-loop simulation', in Proceedings of SSB 2014: the 9th International Conference on System Simulation in Buildings, Dec 10-12. Liège, BEL, p. P65.1-P65.15.

9. Energy Research Lab ERL – Institute of Energy in Building FHNW (CH)



Institution

University of Applied Sciences and Arts
Northwestern Switzerland (FHNW)
School of Architecture, Civil Engineering
and Geomatics
Institute of Energy in Building



Location

Gründenstrasse 40
4132 Muttenz
Switzerland

Contact persons

Prof. Dr. Jürg Bichsel
Head of Institute
juerg.bichsel@fhnw.ch
+41 61 228 55 49

Prof. Dr. Ralph Eismann
Head of Research Group
ralph.eismann@fhnw.ch
+41 61 228 53 61

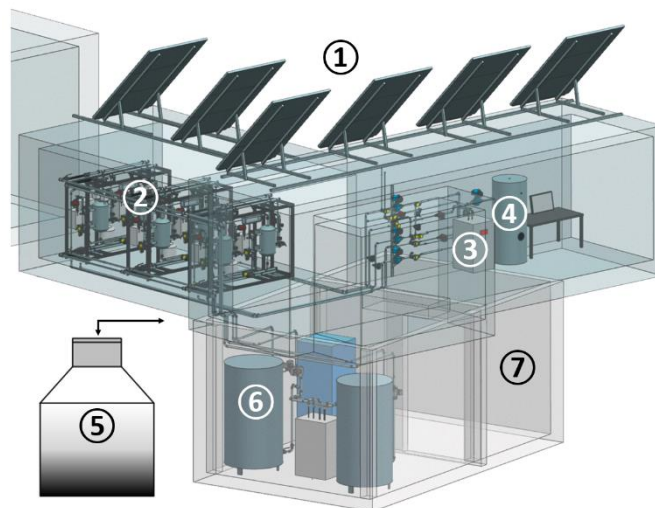
9.1. General Presentation

The Energy Research Lab (ERL) was built in 2013 to test and optimize components for heat and power supply systems in buildings. Testing may focus on the individual performance of a component or its role within an entire system. While heat pumps are most often the central point of interest, evaluation has also included phase-change storage, solar-thermal collectors, complex valves and control systems. Recently, photovoltaics and batteries have been of increasing importance in the ongoing research. In addition to the strictly physical experiments, components are regularly operated in interaction with numerical models, extending the scientific range to systems beyond the confines of the laboratory.

9.2. Description of the Test Facility

9.2.1. The Thermodynamic Core

The functional core of the laboratory is a 2-stage system, capable of dynamically supplying multiple test components with temperature-controlled water. The first stage consists of two 1600 L tanks (6) with hot and cold water, which are connected by one heat pump, simultaneously heating and cooling the corresponding sides. An energy dissipater on the hot side provides a second degree of freedom to regulate the temperatures in the tanks.



Supplied by the first stage, the second stage consists of three pairs of smaller hot- and cold-side tanks (2). Two of these pairs contain water.

The third pair contains a water-glycol mixture. The purpose of these smaller tanks is to provide quick buffer capacity for generating the desired input profiles for test components. Furthermore, the temperature difference between these pairs is smaller than the temperature difference between the big tanks, allowing for easier and more accurate power control.

Figure 43. (1) Photovoltaics (2) Thermodynamic core stage 2 (3) Heat pump (4) Domestic hot water storage (5) Phase-change storage (6) Thermodynamic core stage 1 (7) Climate chamber



Figure 44. Second stage of the thermodynamic core (left). Heat pump and domestic hot water storage (right).

In application, this system is used to emulate sources and sinks, such as geothermal heat exchangers, solar-thermal collectors or room heating. The output values for the emulated components are generated through numerical simulation. The physical outputs are then fed to real test components, such as heat pumps (3) or domestic hot water storage (4), shown in Figure 45.

Thermodynamic Core: Specifications		
Max. mass flow	L/h	6000
Max. power	kW	16
Temperature range	°C	-10...90

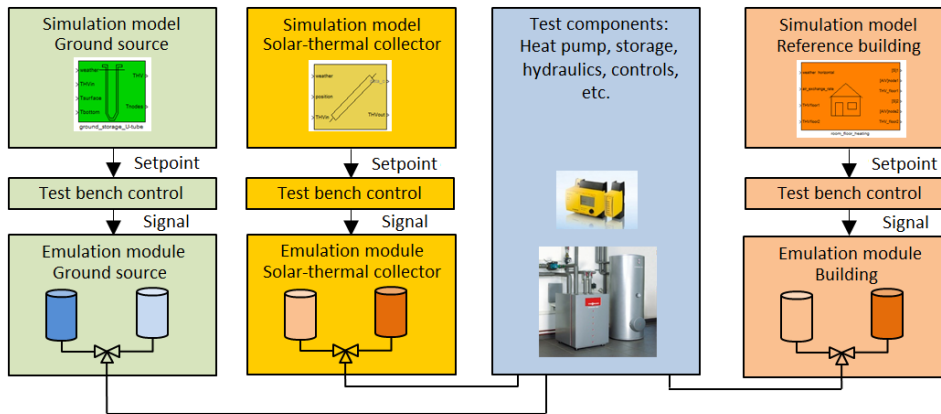


Figure 45. Second stage of the thermodynamic core with emulation models and real test components

9.2.2. Climate Chamber

A climate chamber (7) has been added to the laboratory in 2015 and is used to condition air for testing air-fed heat pumps. Thus, it can be thought of as an extension of the thermodynamic core. Additionally, the climate chamber can be used to study frosting and defrosting on the external heat exchanger and their effect on the performance of the heat pump.

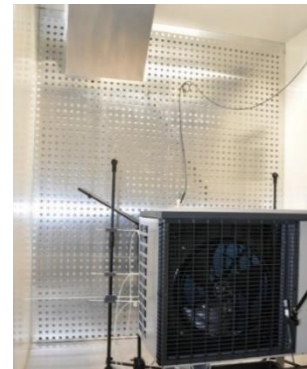


Figure 46. Climate chamber and external unit of split heat pump.

Climate Chamber: Specifications		
Max. air volume	m ³ /h	3500
Temperature range	°C	-20...40
Humidity range	%	15...98

9.2.3. Phase-Change Storage

The laboratory is equipped with a 10 m³ water-based phase-change storage (5) from Viessmann/Isocal. The state of the storage can be measured with a total of 41 temperature sensors. Of

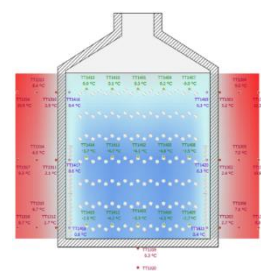


Figure 47. Phase-change storage

those, 21 are located inside the storage, 18 in the earth on its sides and two in the earth below. If needed, the storage could be filled with an alternative fluid, such as paraffin oil or a glycol solution. This would change the melting/freezing point (i.e. operating point) of the storage as well as its capacity.

9.2.4. Electric Installations

In order to extend the research capabilities for household electric systems, a highly instrumented electric distributor with connections for a photovoltaic system, heat pump, battery and household appliances has been installed. While a real photovoltaic system is available in the laboratory, its dependence on the weather makes it unsuitable for reproducible, standardized testing. Therefore, a photovoltaic emulator (Regatron “TopCon Quadro”) has been added to the electric setup. On the demand side, an electric load emulator with up to 8 kW and thermal energy recovery has been installed in the laboratory. Unlike real household appliances, this allows the execution of defined load profiles. It also requires significantly less space. With this setup, control strategies for electric power management can be investigated.

PV Emulator: Specifications		
Max. power	kW	10
Max. voltage	V	600
Max. current	A	20

9.2.5. Sensors and Data Acquisition

The laboratory features a range of sensors for solar radiation, wind speed and ambient temperature. Additionally, the various technical installations and test components contain a large number of sensors, mostly measuring temperatures, flows and electric powers. These sensors feed into event-driven database logging through a self-developed SCADA (Supervisory Control and Data Acquisition) system, which supports all common industrial bus systems. The hardware components were mostly supplied by National Instruments.

9.2.6. Simulation

The primary software used for simulations is Matlab/Simulink in combination with the CARNOT Blockset Toolbox, which offers a wide array of standard components, ranging from controllers and valves to entire buildings. CARNOT’s open source nature is frequently used to modify existing components to fit individual requirements and to add additional component models to the toolbox (Figure 48).

CARNOT Blockset Features (selection)	
• Hydraulics	• Solar-thermal collectors
• Pneumatics	• Geothermal systems
• Heat pumps	• Combustion heaters
• Control systems	• Thermal house models
• Thermal storage	• Water tapping cycles
• Photovoltaics	• External weather data

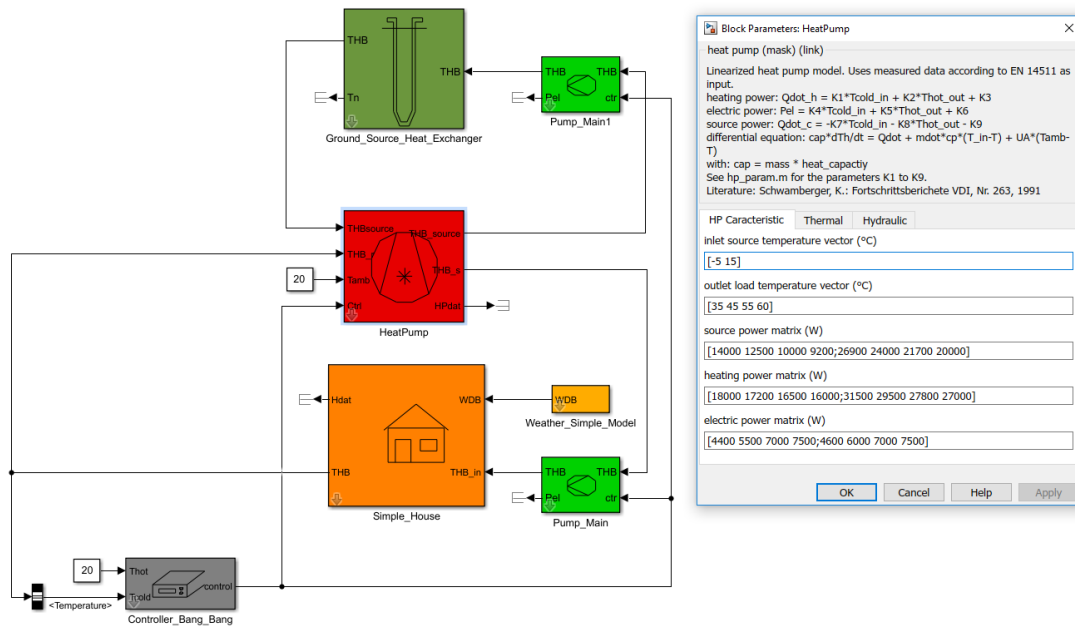


Figure 48. Example of a simple CARNOT model with parameter mask for the heat pump

9.2.7. Roof Installations

On the roof of the laboratory, six mounting points for photovoltaic or solar-thermal modules are installed. These can be manually tilted and rotated.

9.2.8. Test Components

Listed below are the components currently installed in the laboratory for performance evaluation. They were selected to be representative of components installed in typical single-family houses and work together as a well-balanced unit.

Component	Manufacturer	Model	Spec	Unit	Value
Brine/water heat pump	Viessmann	Vitocal 300-G	Power	kW	8.4
Air/water heat pump	Viessmann	Vitocal 200-S	Power	kW	4.75
DHW storage	Viessmann	Vitocell V100 CVW	Volume	L	390
DHW storage	Viessmann	Vitocell 100-B CVB	Volume	L	500
Solar-thermal collector (3x)	Energie So-laie	Absorber AS/TS 1/TSS	Surface	m ²	1.78
Photovoltaic panel (4x)	Panasonic	12 HIT-N240	Power	kW _p	2.9
Inverter	SMA	STP 5000TL-20	Power	kW	3
Battery	LG	Resu 6.5	Capacity	kWh	5.9

9.3. Examples of Previous Studies

9.3.1. Study 1: SOFOWA

The SOFOWA study has explored the potential of combining solar-thermal collectors (ST), water-based phase-change storage (PCS), photovoltaics (PV), combined photovoltaic-thermal panels (PVT) and heat pumps (HP) for space and domestic hot water heating in single-family houses. The phase-change storage in the laboratory was experimentally characterized in order to build a numerical model in CARNOT. The annual performance evaluations were conducted as pure simulations.

The study consists of two parts. In the first part, five systems for heat generation and storage (#1-5) were tested on the standard house model SFH45. This model has a defined space heating load (SHL) and was taken from IEA SHC Task 44 HPT Annex 38. Three systems (#1-3) included an air/water heat pump (A/W-HP) while dividing the roof area between solar-thermal collectors and photovoltaics. The system with only solar-thermal collectors on the roof (#1) had a much larger space heating storage (SHS), which also included domestic hot water (DHW). In system #4 (shown in Figure 49), the air/water heat pump was “replaced” with phase-change storage and a brine/water heat pump (B/W-HP), while the solar-thermal part of the roof area was changed from glazed to unglazed, which is advantageous for convective heat gains at low ambient temperatures. System #5 is similar to system #4, except the roof area is no longer divided, but fully covered with combined photovoltaic-thermal panels.

Power and heat systems: Part 1								
System	ST	PV	B/W-HP	PCS	A/W-HP	SHS	SHL	SPF
1	50 m ²				7.5 kW	10 m ³	4.0 kW	13.2
2	8 m ²	42 m ²			7.5 kW	900 L	4.0 kW	4.0
3		50 m ²			7.5 kW	900 L	4.0 kW	3.0
4	10 m ² unglazed	40 m ²	6.0 kW	10 m ³			4.0 kW	4.2
5	50 m ² PVT		6.0 kW	10 m ³			4.0 kW	4.2
Power and heat systems: Part 2								
System	ST	PV	B/W-HP	PCS	A/W-HP	SHS	SHL	SPF
6	13 m ² unglazed		8.0 kW	10 m ³			7.5 kW	4.47

SPF: Seasonal Performance Factor before Storage

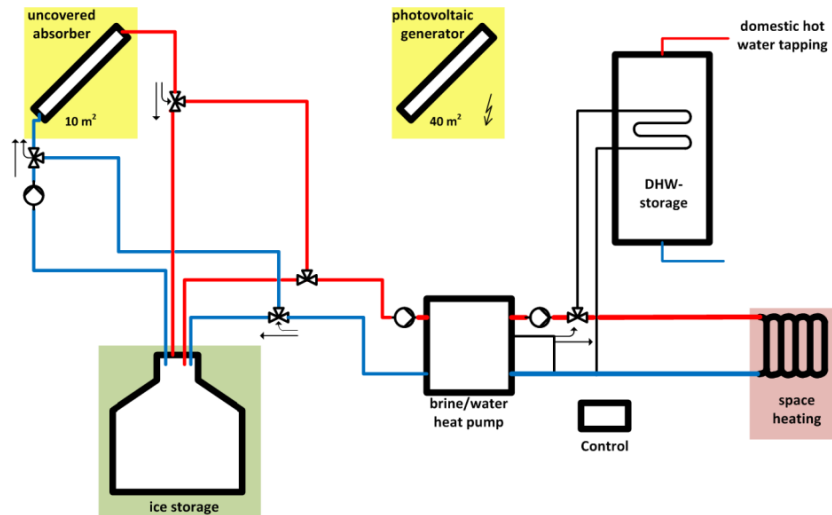


Figure 49. System #4

In Figure 50, the annual consumption of grid electricity for systems #1, #2, #3 and #5 as well as a reference with no solar technology for SFH45 are shown. During summer, none of the tested systems had significant grid power consumption, since the photovoltaic panels in systems #2-5 supplied enough power to cover the domestic hot water production and the solar-thermal collector in system #1 has a very high SPF. During the colder part of the year, grid power consumption of systems #2 and #3 is almost identical, although the mixed system #2 has a higher SPF than the purely photovoltaic system #3. This can be attributed to the superior SPF of solar-thermal collectors compared to air-water heat pumps (compare system #1). System #1 has similar grid power consumption as systems #2 and #3 during winter, but stretches the phase of almost no grid power consumption much further into the seasonal transition. This is owed to the large collector area in spring and to the large space heating storage in autumn. The grid power consumption of system #5 is similar to systems #2-3 in shape, but lower since under cold conditions, the combination of phase-change storage and a brine/water heat pump has a higher SPF than an ambient air/water heat pump. The performance of the combined photovoltaic-thermal panels in system #5 is comparable to that of the split configuration in system #4. However, system #5 feeds more electric power into the grid.

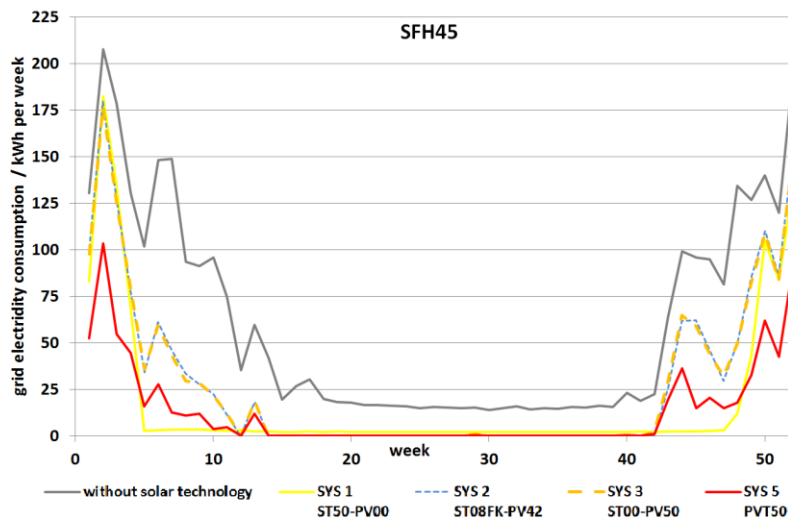


Figure 50. Annual grid electricity consumption of the systems for SFH45

In the second part, system #6 was tested on the modified house model SFH45*, which has a bigger space heating load than SFH45. Figure 51 shows the monthly energy balance of the phase-change storage. This includes freezing and melting of the storage fluid, gains from the solar-thermal collectors, gains and losses from the ground surrounding the storage and the energy delivered to the brine/water heat pump. Two points may be highlighted here: First, the solar gains are almost completely out of sync with the heating demand and much of the gains in summer appear to be lost to the ground. Second, the thermal gains from the ground are the most significant energy source during winter.

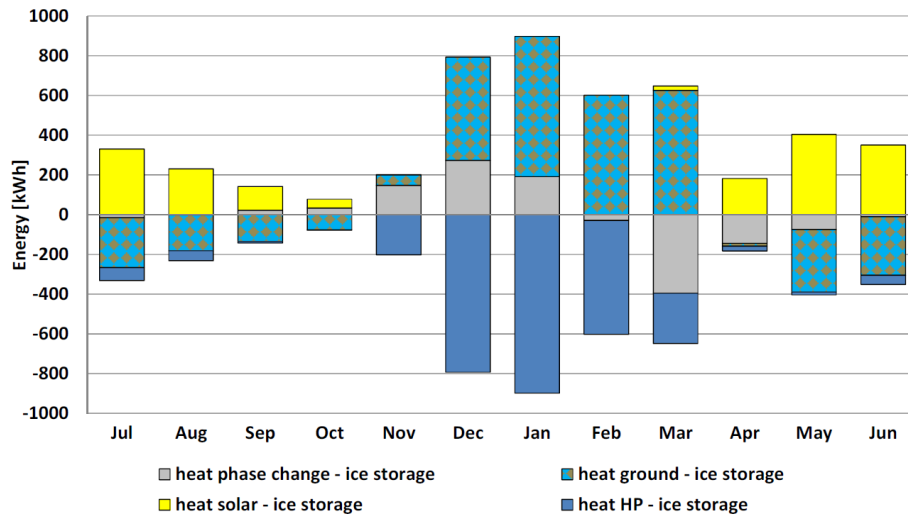


Figure 51. Monthly energy balance of the PCS for SFH45*

In conclusion, it has been shown that the systems proposed in this project can reach an annual SPF of 4.0 and higher. In comparison, this is almost as good as a ground source heat pump with conventional drilling (SPF -4.5) and much better than an air source heat pump (SPF ~3). A particular finding of this study was the dominance of convective heat gains as opposed to solar radiation gains in unglazed solar-thermal collectors, when operated below ambient temperatures with a heat pump. The energy sources in descending order of importance are convective gains on the collector, ground gains, phase change gains and radiation gains on the collector.

9.3.2. Study 2: LEWASEF (in prog.)

A subtask of LEWASEF (successor study of SOFOWA) is the evaluation of the performance of air/water heat pumps in combination with photovoltaics and a battery. Compared to phase-change storage, a battery is commonly much more restricted in capacity. Therefore, a particular focus of this study is on a learning controller, which shifts the load cycles of the heat pump to time slots with photovoltaic overproduction (Figure 52).

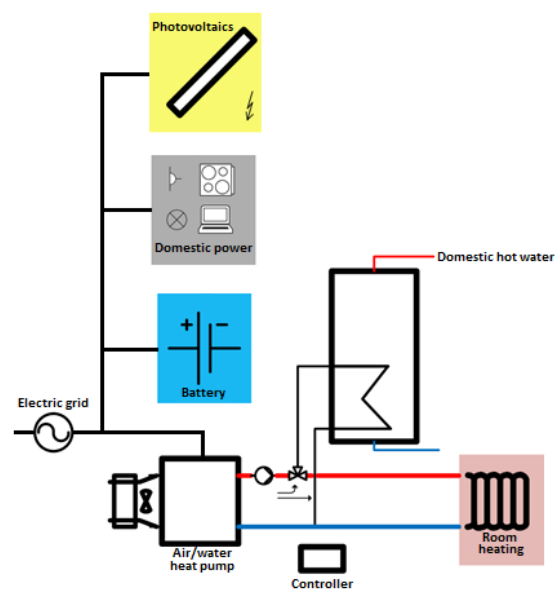


Figure 52. LEWASEF system with PV and battery

A CARNOT model of the system has been built for preliminary testing and to ensure the selected components are well balanced and appropriately scaled for a single-family house. In the next stage, this model will be integrated into the laboratory setup for validation. While the actual heat pump, domestic hot water storage, battery and photovoltaic inverter will be used, the thermodynamics of the house, the weather and the domestic electric power consumption will be provided by the simulation and implemented using the thermodynamic core and the electric emulators. The desired result of the study is a validated system for affordable and effective power and heat generation in single-family houses.

9.4. Maintenance and Collaborations

The laboratory was designed in cooperation with the university's school of architecture and is operated by the Institute for Energy in Building FHNW. The main collaborators are the Swiss Federal Office of Energy as well as various industrial partners. It is also used in the practical education of students from various majors, such as architecture, engineering and life sciences.

9.5. Additional Information

Additional information about the laboratory and the institute can be found under:
<https://www.fhnw.ch/de/die-fhnw/hochschulen/architektur-bau-geomatik/institute/iebau>
(currently only available in German)

Located next to the ERL is the Lighting and Façade Lab. Placed on a rotating platform, this installation is used to test daylight, glare, artificial lighting, façade constructions and blinds.

9.6. Relevant Publications

- Dott, R.; Afjei, T.; Genkinger, A.; Dailbard, A. et al. "Heat Pump Models: A Technical Report of Subtask C, Report C2, Part C" Models of Sub-Components and Validation for the IEA SHC Task 44 / HPT Annex 38 (2013)
- Haller, M.Y.; Dott, R.; Ruschenburg, J.; Ochs, F. and Bony, J. "Part A: General Simulation Boundary Conditions: A Technical Report of Subtask C, Report C1, Part A" Models of Sub-Components and Validation for the IEA SHC Task 44 / HPT Annex 38 (2013)
- Haller, M.Y.; Bertram, E.; Dott, R.; Afjei, T. et al. "Part A: Summary: A Technical Report of Subtask C, Report C2, Part A" Models of Sub-Components and Validation for the IEA SHC Task 44 / HPT Annex 38 (2013)
- Hadorn, J.-C. "Solar and Heat Pump Systems for Residential Buildings" ISBN: 978-3-433-03040-0 (2015)
- Dott, R.; Winteler, C.; Afjei, T.; Genkinger, A. "SOFOWA Final Report" Institute for Energy in Building, FHNW Muttenz (2016)
- Dott R.; Haller M.Y.; Ruschenburg J.; Ochs F. and Bony J. "The Reference Framework for System Simulations of the IEA SHC Task 44 / HPT Annex 38 Part B: Buildings and Space Heat Load A technical report of subtask C Report C1 Part B", available on <http://task44.iea-shc.org>, 2013

10. Test Lab Heat Pumps and Chillers at Fraunhofer ISE



Institution

Fraunhofer Institute for Solar Energy Systems
Division Thermal Systems and Building Technologies
Group Characterisation, Testing and Quality Assurance



Location

Fraunhofer ISE
TestLab Heat Pumps and Chillers
Auerstrasse 8
79108 Freiburg (Germany)
Tel. +49 761 4588 5533

TestLab
Heat Pumps
and Chillers



Contact persons

Ivan Malenkovic
Head of Team Test Lab Heat Pumps and Chillers
ivan.malenkovic@ise.fraunhofer.de
Tel. +49 761 4588 5533



10.1. General Presentation

The TestLab Heat Pumps and Chillers provides newest measurement equipment and techniques for the development, testing and characterization of heat pumps and chillers, as well as their components. Various performance classes and problems in the investigation of various appliances, their components and complex systems are covered through a comprehensive and modular infrastructure. Standard as well as individual measurement methods are developed in the lab to support a time- and cost-efficient design, development and optimization process through realistic, dynamic test sequences including hardware-in-the-loop. In depth studies on components such as exact characterisation of novel design heat exchangers or compressors complete the profile. In addition to experimental activities the portfolio includes the use of simulation tools for the modelling and layout of heat exchangers, cooling circuits and systems. The laboratory particularly addresses:

- development and performance testing of heat pumps and chillers;
- investigation and evaluation of novel heat exchangers for ventilation and air conditioning, adsorption and vapour compression technologies;
- characterisation (including full calorimetry) of compressors;
- measurement and investigation of vibration-related topics, including acoustic;
- investigation and evaluation of refrigeration circuits and their components;
- tools and methods for the development of safety components;
- appliances with natural refrigerants.

Heat transfer and pressure loss on characteristic structural sections, true to scale heat exchangers with various fluids and conduct measurements on compressors, heat pumps and cooling units are analysed and evaluated according to various norms and sets of standards. The laboratory provides an integral safety concept which allows the use of flammable refrigerants like R290 propane or R600a isobutene as well as toxic refrigerants like R717 ammonia. The laboratory is accredited according to DIN EN ISO/ IEC 17025 for the following standards:

- EN 14511,
- EN 14825,
- EN 16147 and
- EN 12309.

It is also approved by DIN CERTCO for Heat Pump KEYMARK tests.

10.2. Description of the Test Facility

10.2.1. General Principle and testing possibilities

The laboratory infrastructure was designed and built for an easy adaptation to a very wide range of technologies and system configurations including gas driven and hybrid systems, multifunctional units (e.g. simultaneous testing of heating, cooling, DHW and ventilation performance), multi-source units etc. The conditioning of different heat transfer media is organised in modules, which can be operated either individually or in a joint network, depend-

ing on the test setup and the measurement requirements. All conditioning modules as well as the controls were designed both for conventional performance measurements according to standards and regulations as well as for dynamic measurement sequences and hardware-in-the-loop (HiL) tests. Secure data transfer concepts are available for easy data transfer between the customer and the lab which enables easy and constant access to the control unit of the appliance under test or simulation data transfer for HiL measurements where the simulation is running on an external server.

An integral safety concept enables handling and testing of components and appliances charged with flammable and/or toxic refrigerants covering classification groups A1-3 and B1-3 according to ANSI/ASHRAE 34, including A2L group of refrigerants. For gas driven units, tests with the full range of test gases according to EN 437 are possible.

Due to the modularity of the media conditioning equipment, all appliances from **¡Error! No se encuentra el origen de la referencia.**, as well as complex multi-source, multi-sink system configurations can be tested in the lab. Additionally, complex systems including e.g. solar thermal or photovoltaic with or without battery and with or without grid connection can be tested as an integral unit through virtual connections with other highly specialized laboratories at ISE. Interaction with electric grid of such systems can also be simulated.

Beside media conditioning equipment, other specialized test benches and equipment are available in the laboratory:

- test bench for the full characterization of compressors, including heat losses and vibration/acoustic characteristics;
- test bench for the investigation of leakage mechanisms in refrigeration circuits and its components;
- three-dimensional scanning vibrometer for the dynamic characterisation of mechanical behaviour of components and systems;
- laser-Doppler velocimetry and shadowgraphy for the characterisation of fluid flows;

Table 1: Addressed types of appliances by the laboratory

	water (brine)-to-water (brine)	air-to-water (brine)	water (brine)-to-air	air-to-air	direct expansion to X	x-to-direct condensation
Electrically driven heat pump/ chiller	X	X	X	X		
Gas driven heat pump/ chiller	X	X	X	X		
Thermally driven chiller	X	X	X	X		
Hybrid heat pumps/ chillers	X	X	X	X		
Gas motor heat pump/ chiller	X	X	X	X		

All conditioning modules, as well as control modules, can be connected to each other directly or via a dedicated laboratory network. The modules are equipped with high-accuracy measurement equipment. All data are then transferred to the control module and secured both on the local computer as well as on a network server.

The general concept (using an example of the measuring of a gas-driven heat pump) of a test setup is illustrated in Figure 53. The available modules are objective of the next chapter.

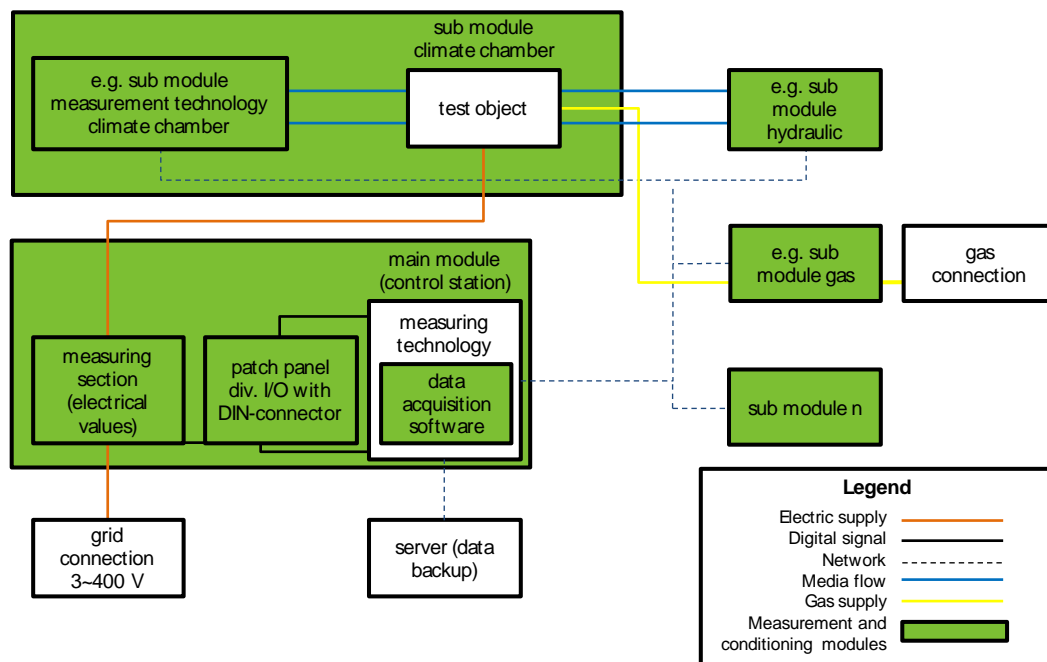


Figure 53. General concept of the testing setup including the measuring and conditioning modules

As shown in Figure 53, the control module is connected to the laboratory network, as well as all other conditioning modules. Over the graphical user interface of the control module, all other modules, as well as the measurement procedure, are controlled. The measurement of the parameters of the electrical supply is integrated into the control module. The test procedure can be programmed to be carried out and supervised automatically or the setup can be connected to a software environment for HiL test sequences. All data are secure and cannot be accessed from outside.

10.2.2. Equipment available and specifications

The laboratory provides approximately a 560 m² of usable space. In addition there is space usable as storage or workshop facility. The minimum clear height is about 4.5 m. It is possible to use the building's roof for outdoor tests. Figure 54 shows the floor plan of the laboratory.

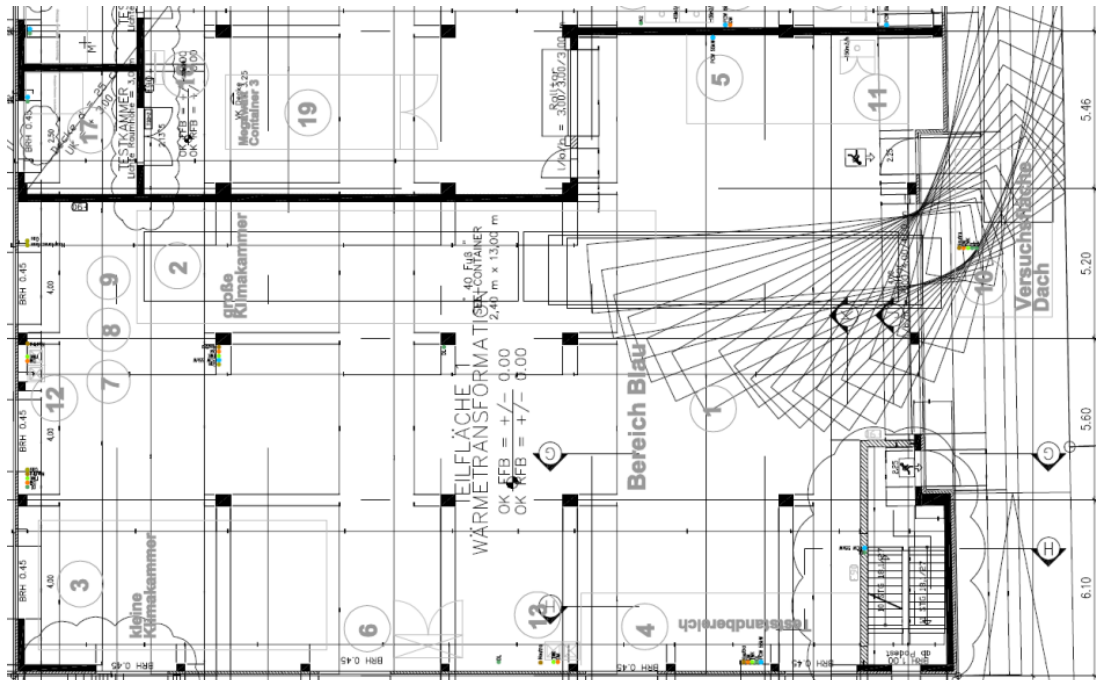


Figure 54: Floor plan of the Centre for Heating and Cooling Technologies

The laboratory is supplied with the following infrastructure:

- 245 kW electrical power,
- 220 kW cooling water (about 22 °C),
- 10 m³/h natural gas,
- 10 m³/h test gas
- 200 m³/h combustion gas,
- 1.95 m³/h municipal water,
- 0.75 m³/h compressed air,
- 1.2 m³/h deionized water,
- adjustable voltage source,
- gas warning system,
- smoke detection system,
- accident ventilation system,
- heating/ ventilation/ cooling system.

The entrance area of the laboratory is equipped with a 3.8 metres wide ramp and a 7 metres wide and 4 metres high gate.

In the following tables Table 2 to Table 8 the modules are specified. Also the climate chamber and related infrastructure will be presented.

Table 2: Specifications of the central modules 10 and 30

Central modules	
Central module 10	Quantity: 1
Dimensions	1905 mm x 670 mm x 1655 mm
Number of specimens	max. 4
Performance of the specimen	max. 10 kW
Control interface	RS232, RS485, Ethernet, Modbus, USB2, USB3
Electrical interface	CEE-plug 16 A, CEE-plug 32 A
Central module 30	Quantity: 2
Dimensions	1905 mm x 670 mm x 1655 mm
Number of specimens	max. 5
Performance of the specimen	max. 30 kW
Control interface	RS232, RS485, Ethernet, Modbus, USB2, USB3
Electrical interface	CEE-plug 16 A 1~, CEE-plug 16 A 3 ~ CEE-plug 32 A 3 ~, CEE-plug 64 A 3~

Table 3: Specifications of the sub module brine

Sub module brine	Quantity: 1
Dimensions	2050 mm x 1600 mm x 1800 mm Storage: 2300 mm x 1300 mm x 1600 mm Chiller: 2015 mm x 850 mm x 1565 mm
Temperature range, brine	-25 bis 95 °C
Temperature range, water	+5 bis 95° C
Volume flow	0,4 bis 9 m³/h.
Heating output	30 kW
Cooling output	3 bis 30 kW
Storing capacity hot and cold water	500 l each

Table 4: Specifications of the sub module water

Sub module water	Quantity: 3
Dimensions	2360 mm x 3200 mm x 2340 mm
Temperature range	+5 bis 95° C
Volume flow	0,4 bis 9 m³/h.
Heating output	40 kW (expansion up to 70 kW possible)
Cooling output	40 kW (expansion capability according to temperature range)
Storing capacity hot and cold water	750 l each

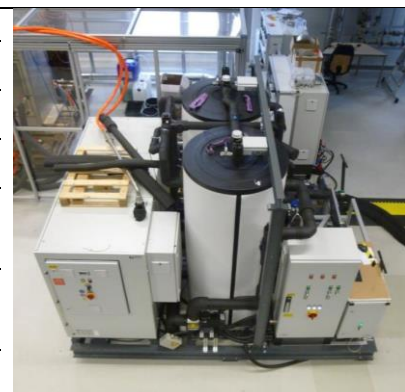


Figure 55: Submodule hydraulic

Table 5: Specifications of the sub module heat meter

Sub module heat meter	Quantity: 5
Dimensions	1200 mm x 750 mm x 1600 mm
Mass flow	0,1 bis 3,2 kg/s
Temperature range	-30 bis 110 °C
Pressure	max. 8 bar

test rig for the
examination and
calibration of heat
meters

Further equipment



Figure 56: Submodule heat meter

Table 6: Specifications of the sub module potable water

Sub module potable water	Quantity: 1
Dimensions	2100 mm x 1000 mm x 1600 mm
Storage capacity	500 l
Volume flow	0 bis 20 l/min
Temperature range	10 °C ± 1



Figure 57: Submodule potable water

Table 7: Specifications of the sub module gas

Sub module gas	
Volume flow	0,5-14 m ³ /h
Regulated pressure, connection natural gas	ca. 25 mbar
Regulated pressure, connection test gas (e.g. CH₄)	ca. 25 mbar

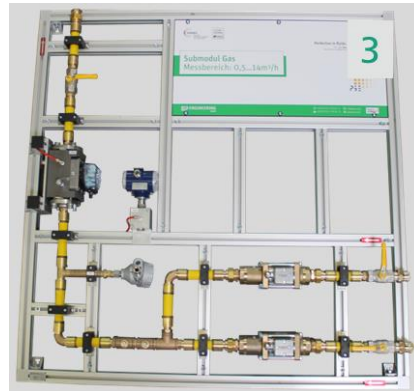


Figure 58: Sub module gas balancing

Table 8: Specifications of the sub modules air condition section

Submodule air condition sections	Quantity: 3
Air flow rate	80-5000 m ³ /h
Cooling output	1.5 kW – 50 kW
Heat output	Max. 50 kW
Temperature range	-15 to 50 °C
Humidity range	20 to 90 %
Humidification performance	max. 40 kg/h
Permitted refrigerants (small air condition section)	R1270
Permitted refrigerants (big air condition section)	R134a, R134a (KS01), R404a (KS02)



Figure 59: Submodule air condition section

Climate chamber:

Included in the laboratory is a calorimetric double climate chamber for specimens up to 100 kW heating or cooling capacity (50 kW in calorimetric operation) at temperatures of -25° to 50°C and relative humidity of 25% to 95%. It is possible to operate the climate chambers separately and linked, too. Due to the installed gas, flue gas and fresh air connections it is possible to assess gas-powered devices. The chambers are equipped with a smoke detection as well as a gas warning system. The regulation of the climate chambers and the data acquisition are



Figure 60: Double climate chamber

integrated within the measuring and conditioning system. The climate chambers are calibrated automatically. Figure 61 shows the floor plan of the double climate chamber with the related infrastructure.

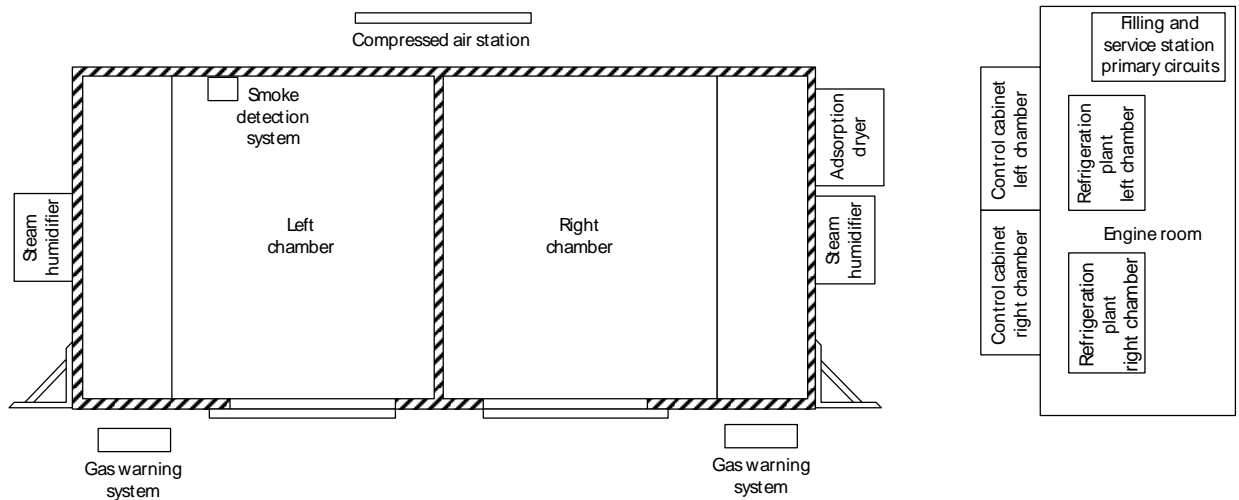


Figure 61: Plan of the climate chamber

The climate chamber is designed in accordance with the listed standards within the general description. Each chamber has a volume of 64 m³, with the technical data per chamber that are specified in Table 9.

Table 9: Specifications of the climate chamber

heat capacity	48 kW
cooling capacity	50 kW
temperature range	-25 to +55°C, control accuracy: <+/- 0,3 K
room humidity range	25-98%, control accuracy: <+/- 0,3 K
air flow	40,000 m ³ /h
humidification performance	45 kg/h
airtightness	< 0,3 m ³ at 500 Pa
gas supply	natural gas, test gas
permitted refrigerants	A1, A2, A3, B1, B2 (in accordance with EN 378), fill volume: 20 kg

10.2.3. Data acquisition and control

The measuring/balancing of the energy flows (power, gas, heat) of the specimens are being taken through integrated conditioning and measuring technology in the modules as well as other optional technologies that can be integrated easily in the system. The modules within the concept are highly interconnected. The central modules are the main modules responsible for data acquisition and storage, synchronization of



Figure 62: Central module with patch panel and electric energy balancing

the various controlling of the connected sub modules and acting as the central interface, while the sub modules meet the measuring and conditioning demand. Each of the modules is characterized with its own IP address. The data technical connection between the sub modules and the central modules is achieved by the direct use of a Modbus TCP/IP or by using a subnet within the institute's network. The submodules can be networked in any combination to suit the requirements of the measurement purpose. Several independent measurements can be carried out simultaneously.

For the controlling and visualization a graphical interface based on the own institute's platform REMUS was developed together with PSE AG. A test algorithm used for error detection of the raw data was developed, to assure an early identification of faults. Further a central SQL-based database manages data records on specifications and technical characteristics of the modules to avoid redundant information.

For visualising the data a web platform is linked to the database, to allow immediate visualisation of measured data. A basic framework for Excel spreadsheets was created to allow a standardized and simplified communication.

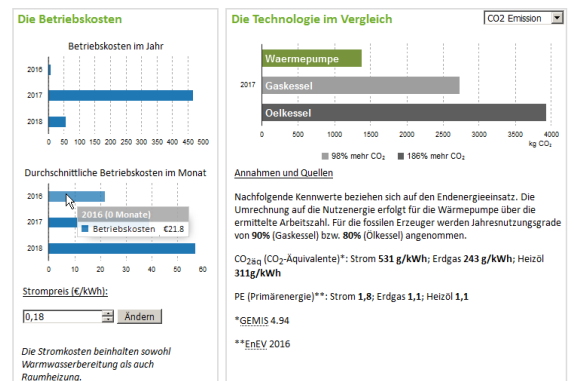


Figure 63: Screenshot of the visualization of measurement data

10.3. Example of previous studies

Several measurements within different projects on international and national bases which are listed in the following have been carried out/are carried out within the Test Lab.

International projects:

- GreenHP: Development of a refrigerant distributor for micro-channel evaporator for a significant reduction of refrigerant charge. See: www.greenhp.eu.
- Heat4U: Measurement of a prototype air-to-water gas absorption heat pump and evaluation of relevant standardised measurement methods. See: www.heat4u.eu.
- EcoTest: Measurement of different electrically and gas driven heat pumps in the frame of round robin tests to evaluate current standards used within the eco-design and energy labelling directives. See: www.ecotest.dgc.eu.
- Annex 43: Fuel-driven sorption heat pumps: Measurement of a hybrid driven adsorption heat pump in the frame of a round robin test to investigate some aspects of the standardised test procedures. See: www.heatpumpingtechnologies.org/annex43.

National funded projects:

- MOSKWA: Design and hardware-in-the-loop measurement of a prototype compact heat pump (see Figure 64).
- HEAVEN: Hardware-in-the-loop measurement and optimisation of a prototype multi-source heat pump.
- safeHP: Investigation of leakage mechanisms and development of safety concepts for refrigeration circuits using natural refrigerants.
- BAM: Round robin test and measurement method development for the implementation of market surveillance within the eco-design directive for brine-to-water and air-to-air heat pumps.



Figure 64: Setup of the demonstration unit in MOSKWA for the combined use of outside and discharged air

Contract measuring:

Several measurements according to relevant standards of:

- Air-to-air, water-to-water, brine-to-water and air-to-water electrically driven heat pumps;
- air-to-air, water-to-water and brine-to-water gas driven (hybrid) sorption heat pumps;
- water-to-water hybrid (compression-adsorption) chillers.

10.4. Maintenance and collaborations

The Test Lab is run and managed by Fraunhofer ISE, the Fraunhofer Institute for Solar Energy Systems. Its facilities are located in Freiburg, Germany as well as the Fraunhofer ISE's headquarter. Around ten to fifteen employees including graduating students are maintaining, organizing and using the lab facilities on the current state. Access to the laboratories is guaranteed provided that safety training has been conducted.

The Test Lab was developed in close collaboration with PSA AG and MONDAS GmbH. Research projects are essentially commissioned by the Federal Ministry for Economic Affairs and Energy (BMWi) and the Federal Institute for Material Research in Germany (BAM) as well as by the EU and several industrial partners.

In future research projects collaborations with developers, manufacturers and distributors of heating pumps, chillers, ventilation systems as well as of their components can be expected.

10.5. Additional Information

The labs online presence can be found at the following URL:

<https://www.ise.fraunhofer.de/en/rd-infrastructure/center/center-for-heating-and-cooling-technologies.html>.

10.6. Relevant publications

Oltersdorf, T.; Dankwerth, C.; Braungardt, S.; Huchtemann, K.; Kopmann, N.; Heinen, L. (2016): Auslegung und Untersuchung einer Mehrquellen-Wärmepumpe mit einzelraumgeregeltem Senkenmanagement. Fraunhofer ISE E.ON ERC EBC Vaillant GmbH. DKV Vortrag, Kassel 11/2016.

Oltersdorf, T.; Dankwerth, C.; Braungardt, S.; Miara, M.; Henning, H-M.; Heinen, L. Salg, F. (2017): Sizing, manufacturing, and testing of an evaporator coil for multiple air-borne heat sources. Fraunhofer ISE E.ON ERC EBC Vaillant GmbH. IEA HPC Paper, Rotterdam 05/2017.